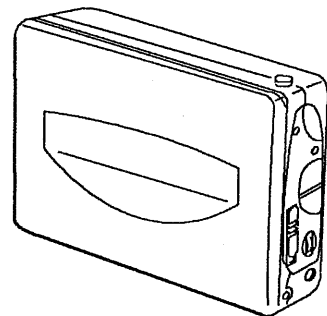


aiwa

HS-PX410

SERVICE MANUAL




STEREO CASSETTE PLAYER

• BASIC TAPE MECHANISM : OZM - 1

• TYPE. Y, YZ, Y1, YZ1, AU

SPECIFICATIONS

Maximum output :	10mW + 10mW (EIAJ/32 Ω) 12mW + 12mW (EIAJ/16 Ω)
Power source :	DC 3V Dry cell battery : LR-03 (UM-4, AAA, R03) \times 2 Rechargeable battery : PB-4 Household AC power (using an optional AC adaptor AC-207)
Weight :	Approx. 198g (6.93 oz)
Dimensions :	108.6 (W) \times 81.6 (H) \times 26 (D) mm (4 $\frac{3}{8}$ \times 3 $\frac{1}{4}$ \times 1 $\frac{1}{16}$ in.) incl. projecting parts and controls
Battery life :	Alkaline batteries (AAA, LR03) \times 2 Approx. 8 hours (EIAJ, PB 1mV output) Manganese batteries (UM-4, AAA, R03) \times 2 Approx. 4 hours (EIAJ, PB 1mV output) Rechargeable battery : PB-4 Approx. 2 hours [EIAJ, PB 1mW/10 minutes (H model is 15 minutes) recharging] Approx. 4 hours (EIAJ, PB 1mW/60 minutes recharging)

- Design and specifications are subject to change without notice.
- Dolby noise reduction manufactured under license from Dolby Laboratories Licensing Corporation.
"DOLBY" and the double-D symbol  are trademarks of Dolby Laboratories Licensing Corporation.

AIWA CO., LTD.

Tokyo Japan

Printed in Japan

DISASSEMBLY INSTRUCTIONS

1. "Box, Battery and Cabinet, Rear" Removal

(See Figure - 1)

- 1) Remove the "Box, Battery" in the direction of arrow.
- 2) Remove 8 screws (A×1, B×3, C×1, D×1, E×2) and remove the "Cabinet, Rear".

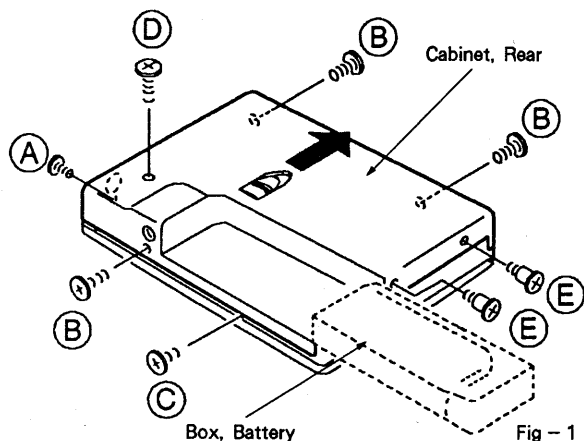


Fig - 1

1-1. "Cassette Lid ASSY" Removal (See Figure - 2)

- 1) Remove 5 screws (A×4, B×1) and take out the "Cassette Lid ASSY".

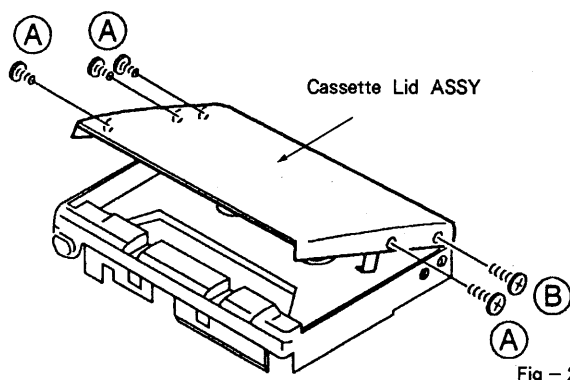


Fig - 2

2. "Frame, Control and Frame, Bottom" Removal

(See Figure - 3)

- 1) Remove 4 screws (A×2, B×1, C×1).

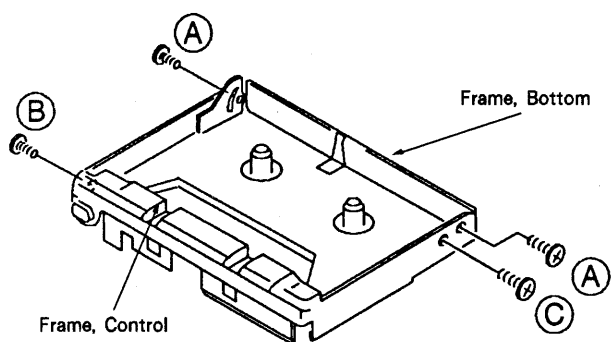


Fig - 3

2-1. "Frame, Control and Frame, Bottom" Removal

(See Figure - 4)

- 1) Remove the "Frame, Bottom" in the direction of the arrow ①.
- 2) Remove the "Frame, Control" in the direction of the arrow ②.

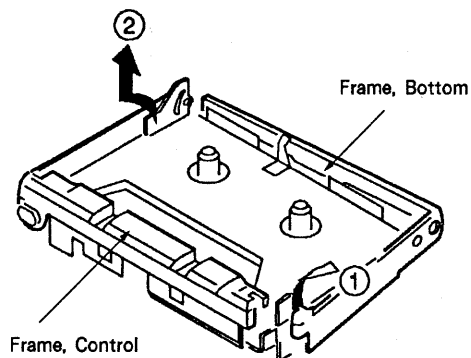


Fig - 4

3. "Main C.B" Removal (See Figure - 5)

- 1) Remove 4 screws (A×1, B×3) unsolder the soldered points and remove the "Main C.B".

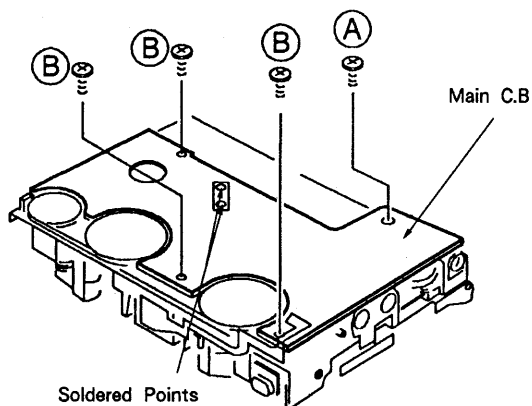


Fig - 5

4. Caution When Servicing

The operation check with the "Main Circuit Board" removed cannot be performed because the rotary switch of the "Gear, Cam" is separated from the mechanism. Use the following JIG (OZM-1 CHECK KIT) to perform operation check while the "Main Circuit Board".

① How to assemble the JIG (See Figure-6)

- 1) Assemble the JIG as shown in the figure.

OZM-1 JIG PARTS NO

PARTS NO	DISCRIPTION
09-021-052-010	OZM-1 CHECK KIT

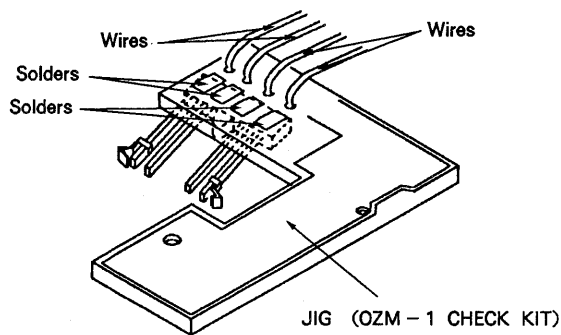


Fig - 6

② How to attach the JIG (See Figure-7)

- 1) Tighten the JIG with screw.

Caution : Be careful that the "Cam, Main" and "Arm, Motor SW" do not ride over the switch when attaching the JIG.

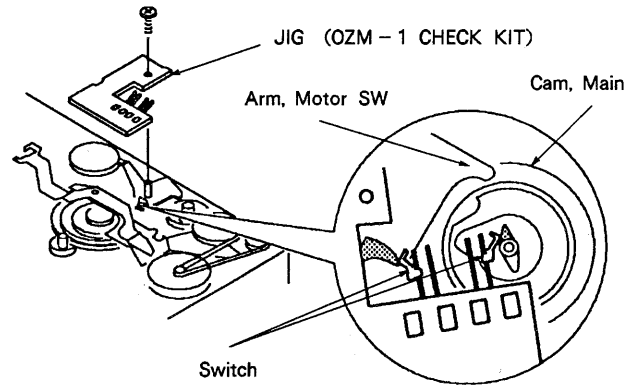


Fig - 7

- 2) Connect the "JIG and MD Plunger" to the "Main Circuit Board" using the wires as shown in the figure. (See Figure-8)

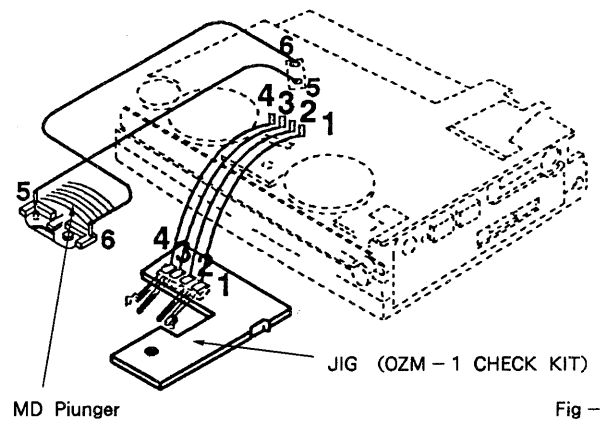


Fig - 8

ELECTRICAL MAIN PARTS LIST

REF. NO. PART NO. DESCRIPTION

===IC===

87-001-351-089 IC, AN6612S
87-020-955-189 IC, NJM2065AM
87-020-670-089 IC, TA8115F

===TRANSISTOR===

89-112-134-089 TRANSISTOR, 2SA1213Y
87-026-472-089 TRANSISTOR, HN1A01F(Y)
87-026-467-089 TRANSISTOR, HN1C01F(GR)
87-026-470-089 TRANSISTOR, HN1C03F(B)

87-026-428-089 TRANSISTOR, RN2310
87-026-480-089 TRANSISTOR, RN4605
87-026-481-089 TRANSISTOR, RN4607
87-026-482-089 TRANSISTOR, RN4610

===DIODE===

87-001-165-089 DIODE, CHIP 1SS300
87-001-166-089 DIODE, CHIP 1SS301
87-001-167-089 DIODE, CHIP 1SS302

===MAIN CIRCUIT BOARD SECTION===

C1 ★87-012-271-089 CAP, CHIP U 560P-50 B
C2 ★87-012-271-089 CAP, CHIP U 560P-50 B
C3 ★87-012-271-089 CAP, CHIP U 560P-50 B
C4 ★87-012-271-089 CAP, CHIP U 560P-50 B

C5 ★87-010-587-019 CAP, CHIP ELECT 100-2
C6 ★87-010-587-019 CAP, CHIP ELECT 100-2
C7 ★87-016-118-080 CAP, CHIP U 0.022-25 BJ
C8 ★87-016-118-080 CAP, CHIP U 0.022-25 BJ

C9 ★87-010-787-089 CAP, CHIP U 0.022-25 B
C10 ★87-010-787-089 CAP, CHIP U 0.022-25 B
C11 ★87-010-805-089 CAP, CHIP S 1-16F
C12 ★87-010-805-089 CAP, CHIP S 1-16F

C13 ★87-012-280-089 CAP, CHIP U 3300P-50 B
C14 ★87-012-280-089 CAP, CHIP U 3300P-50 B
C15 ★87-010-805-089 CAP, CHIP S 1-16F
C16 ★87-010-805-089 CAP, CHIP S 1-16F

C17 ★87-010-674-089 CAP, CHIP ELECT 220-2 MV
C18 ★87-010-674-089 CAP, CHIP ELECT 220-2 MV
C20 ★87-010-805-089 CAP, CHIP S 1-16F
C21 ★87-010-805-089 CAP, CHIP S 1-16F

C22 ★87-010-829-089 CAP, CHIP U 0.047-16F
C23 ★87-010-829-089 CAP, CHIP U 0.047-16F
C24 ★87-015-934-089 CAP, CHIP TANTALUM 2.2-4
C25 ★87-015-934-089 CAP, CHIP TANTALUM 2.2-4

C26 ★87-012-141-089 CAP, CHIP S 0.22-16 F
C27 ★87-012-141-089 CAP, CHIP S 0.22-16 F
C28 ★87-012-141-089 CAP, CHIP S 0.22-16 F
C29 ★87-012-141-089 CAP, CHIP S 0.22-16 F

C30 ★87-015-934-089 CAP, CHIP TANTALUM 2.2-4
C31 ★87-015-934-089 CAP, CHIP TANTALUM 2.2-4
C32 ★87-012-284-089 CAP, CHIP U 6800P-50 B
C33 ★87-012-284-089 CAP, CHIP U 6800P-50 B

C34 ★87-012-233-089 CAP, CHIP U 150P-50 RH
C35 ★87-012-233-089 CAP, CHIP U 150P-50 RH
C36 ★87-012-283-089 CAP, CHIP U 5600P-50 B
C37 ★87-012-283-089 CAP, CHIP U 5600P-50 B

C38 ★87-012-286-089 CAP, CHIP U 0.01-25 B
C39 ★87-012-286-089 CAP, CHIP U 0.01-25 B
C40 ★87-012-283-089 CAP, CHIP U 5600P-50 B
C41 ★87-012-283-089 CAP, CHIP U 5600P-50 B

C42 ★87-010-805-089 CAP, CHIP S 1-16F
C43 ★87-010-805-089 CAP, CHIP S 1-16F
C47 ★87-010-805-089 CAP, CHIP S 1-16F
C48 ★87-010-805-089 CAP, CHIP S 1-16F

C49 ★87-010-829-089 CAP, CHIP U 0.047-16F
C50 ★87-010-829-089 CAP, CHIP U 0.047-16F
C51 ★87-010-829-089 CAP, CHIP U 0.047-16F

REF. NO. PART NO. DESCRIPTION

C52 ★87-010-829-089 CAP, CHIP U 0.047-16F
C53 ★87-012-270-089 CAP, CHIP U 470P-50 B
C54 ★87-012-270-089 CAP, CHIP U 470P-50 B
C55 ★87-010-787-089 CAP, CHIP U 0.022-25 B

C56 ★87-010-787-089 CAP, CHIP U 0.022-25 B
C57 ★87-010-805-089 CAP, CHIP S 1-16F
C58 ★87-010-805-089 CAP, CHIP S 1-16F
C100 ★87-010-587-019 CAP, CHIP ELECT 100-2

C101 ★87-010-805-089 CAP, CHIP S 1-16F
C102 ★87-010-082-019 CAP, CHIP ELECT 220-4 5L
C103 ★87-010-082-019 CAP, CHIP ELECT 220-4 5L
C104 ★87-010-805-089 CAP, CHIP S 1-16F

C105 ★87-010-587-019 CAP, CHIP ELECT 100-2
C106 ★87-010-082-019 CAP, CHIP ELECT 220-4 5L
C107 ★87-010-805-089 CAP, CHIP S 1-16F
C108 ★87-010-805-089 CAP, CHIP S 1-16F

C109 ★87-010-424-089 CAP, CHIP TANTALUM 4.7-4
C110 ★87-012-286-089 CAP, CHIP U 0.01-25 B
C111 ★87-010-746-089 CAP, CHIP TANTALUM 10-4
C112 ★87-010-424-089 CAP, CHIP TANTALUM 4.7-4

C113 ★87-010-196-089 CAP, CHIP S 0.1-25 F
C114 ★87-010-746-089 CAP, CHIP TANTALUM 10-4
C115 ★87-010-196-089 CAP, CHIP S 0.1-25 F
C116 ★87-015-933-089 CAP, CHIP TANTALUM 1-10

C117 ★87-015-934-089 CAP, CHIP TANTALUM 2.2-4
C118 ★87-010-082-019 CAP, CHIP ELECT 220-4 5L
C119 ★87-010-082-019 CAP, CHIP ELECT 220-4 5L
J2 87-049-549-019 JACK, DC (DC 2V)

L1 ★81-HK1-614-080 COIL, CHIP 10 mH
L2 ★81-HK1-614-080 COIL, CHIP 10 mH
LED1 87-001-573-019 LED, SLC22 VR 4F(OPE/BATT)
SOL1 87-045-310-010 SEL, MD PL

R1 87-022-436-089 RES, CHIP U 390-1/16W F
R2 87-022-436-089 RES, CHIP U 390-1/16W F
R3 87-022-431-080 RES, CHIP U 240-1/16W F
R4 87-022-431-080 RES, CHIP U 240-1/16W F

R128 87-022-042-089 RES, CHIP MF 0.51-1/8W
R129 87-022-043-089 RES, CHIP MF 8.2K-1/8W
SFR1 ★87-024-076-089 SFR, CHIP 1K
SW1 87-036-123-089 SLIDE SW(TAPE)

SW2 87-036-145-089 SLIDE SW(DOLBY NR)
SW3 87-036-123-089 SLIDE SW(DSL)
SW4 87-036-201-089 SLIDE SW(FWD/REV)
SW5 87-036-199-010 LEAF SW(POWER) (LATCH)

SW7 87-036-203-089 SLIDE SW(FF/REW)
SW8 87-036-144-019 PUSH SW(PLAY)
SW9 87-036-123-089 SLIDE SW(HOLD)
SW10 87-036-073-019 TACT SW(PLAY/DIR)

SW11 87-036-073-019 TACT SW(STOP)
VR101 87-024-361-089 VR, CHIP 20K(VOLUME)

===HEAD FLEX. CIRCUIT BOARD SECTION===

PH 87-046-381-010 HEAD ASSY(W/PCB-C)

===JACK FLEX. CIRCUIT BOARD SECTION===

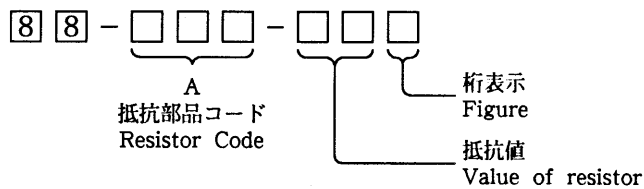
J1 87-009-218-019 JACK, 3.5 BLK(PHONES)
PCB-D ★80-HK4-604-010 FLEXIBLE CIRCUIT BOARD 4P

===MISCELLANEOUS===


M1 87-045-309-010 MOTOR ASSY
TM1 ★82-HR4-204-010 BATTERY CONTACT

○チップ抵抗部品コード／CHIP RESISTOR PART CODE

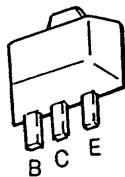
チップ抵抗部品コードの成り立ち
Chip Resistor Part Coding



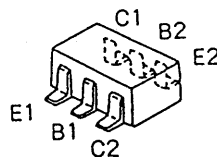
チップ抵抗
Chip resistor

Wattage 容量	Type 種類	Tolerance 許容誤差	Symbol 記号	Dimensions／寸法 (mm)				Resistor Code : A 抵抗コード : A
				Form／外形	L	W	t	
1/32W	1608	± 5 %	CJ		1.6	0.8	0.35	108
1/10W	2125	± 5 %	CJ		2	1.25	1.45	118
1/8W	3126	± 5 %	CJ		3.2	1.6	0.5 ~0.7	128

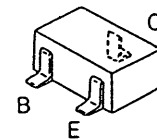
TRANSISTOR ILLUSTRATION



2SA1213



HN1A01F



RN2310

HN1C01F

HN1C03FB

RN4605

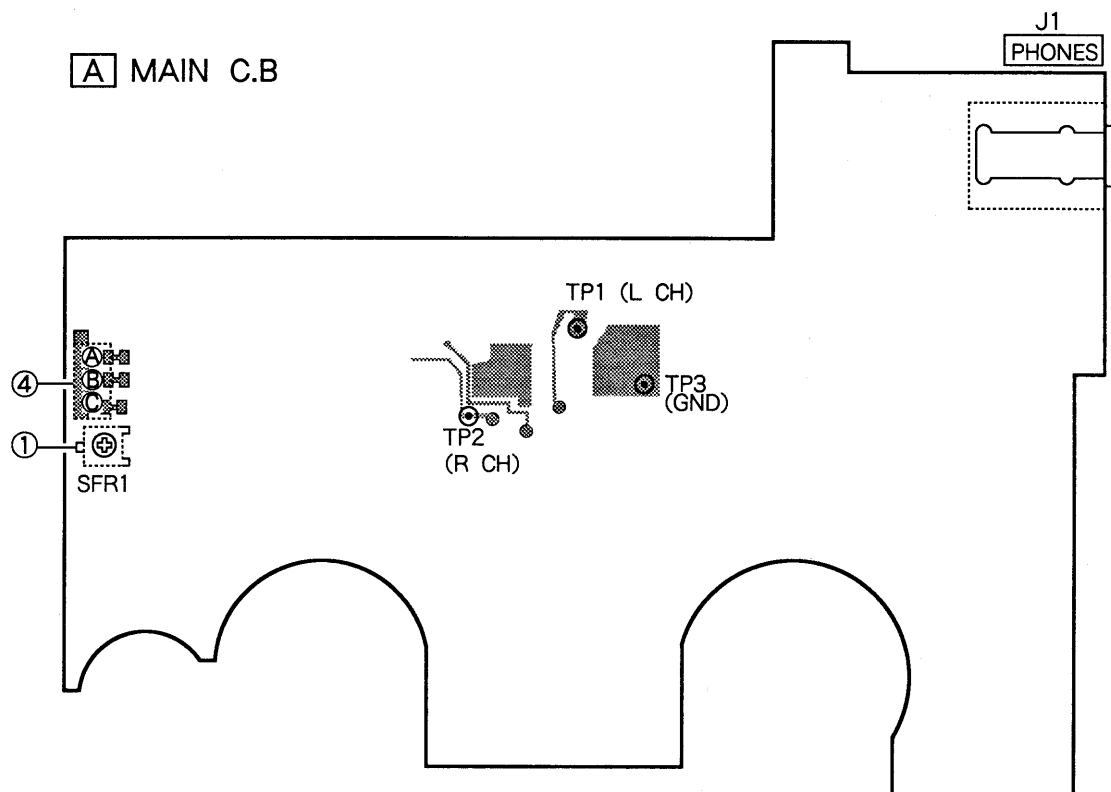
RN4607

RN4610

■ ACCESSORIES/PACKAGE LIST

PART NO. CHANGED TO	REF. NO.	PART NO.	DESCRIPTION	COMMON MODEL	Q.TY
	1	★82-HKA-901-019	INSTRUCTION BOOKLET Y (Y1,YZ1,YB,YJ1,YZ)	※	1
	2	★82-HKA-902-019	INSTRUCTION BOOKLET AU (AU)	※	1
	3	★82-HKB-951-019	CARRYING CASE (YZ1,YJ1)		1
	4	★87-042-097-119	AC-207U/CA (AU)		1
	5	★87-047-116-010	PB-4 NA Y (AU)		1
	6	87-048-230-019	HP-A270 A (YB,AU)		1
	7	87-048-238-019	HP-23NA (Y1,YZ1,YJ1)		1

ADJUSTMENT



PRACTICAL SERVICE FIGURE

1. Tape Speed Adjustment

- Settings :
- Test tape : TTA-100
 - Test point : PHONES JACK
 - Adjustment location : SFR1

Method : Play back the test tape, adjust for 3000 +10Hz, -5Hz at FWD and less than 45Hz at REV.

Tape speed :	3000 ± 60Hz
Wow & flutter :	Less than 0.45 % (JIS)
Take-up torque :	20g-cm~37g-cm (FWD, REV)
F.F & Rew torque :	110 ± 40g-cm
Back tension :	3 ± 1.5g-cm (FWD, REV)
S/N ratio :	More than 45dB
Distortion :	Less than 3.0 %
Noise level :	Less than 3.0mV (VOL MAX)
Frequency response :	63Hz~8kHz ± 4dB (NORMAL)

2. Dolby Level Check

- Settings :
- Test tape : TTA-200
 - Test point : TP1 (L ch), TP2 (R ch), TP3 (GND)
 - DOLBY SW : OFF
 - TAPE SELECTOR : NORM
 - DIRECTION : FWD
 - VOLUME : MIN "0"

Method : Connect at electrolytic capacitor (10 μF/16V) to measured equipment and TP1, TP2 check the voltage for 100mV + 1.5dB, -0.5dB.

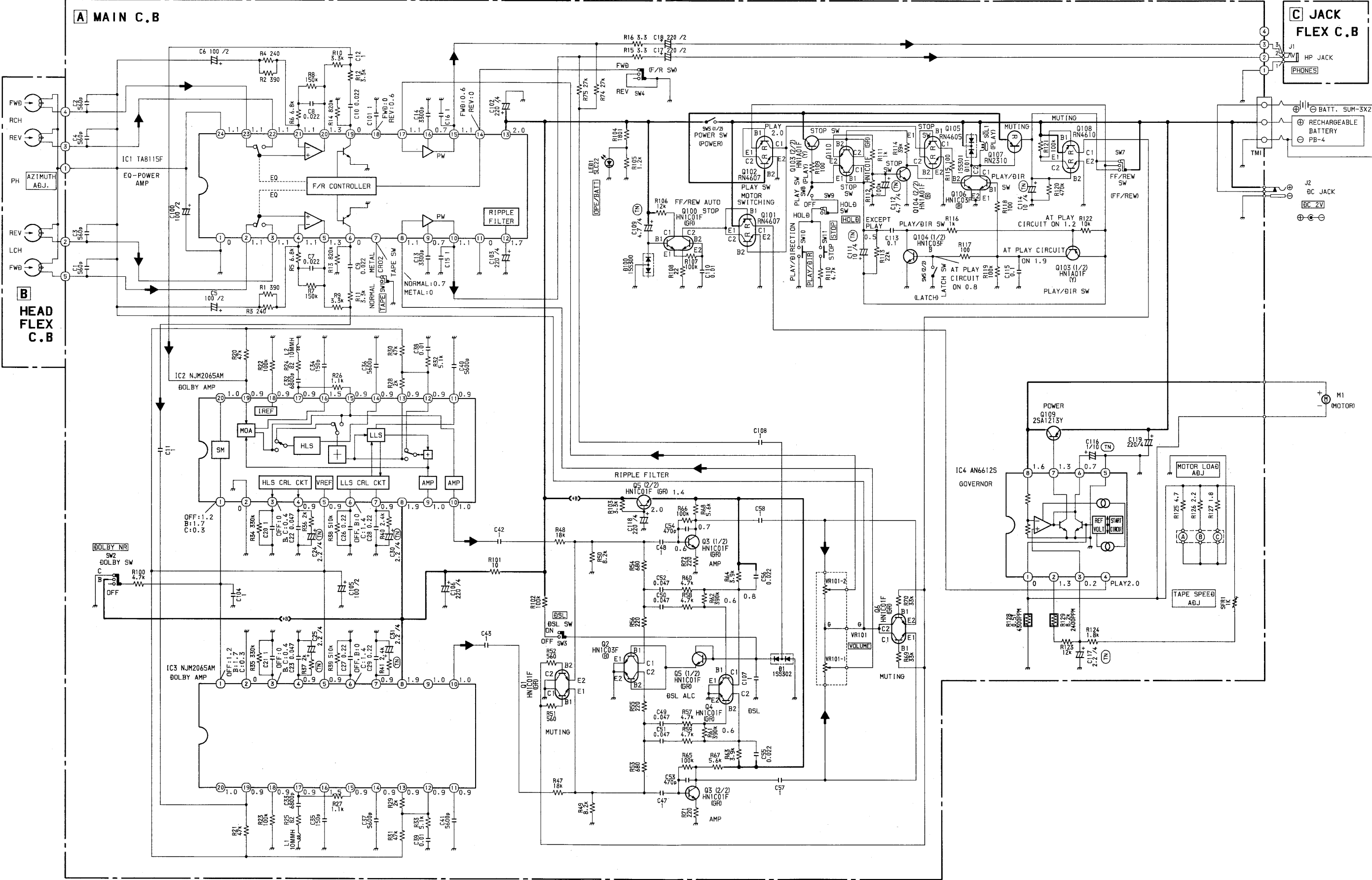
3. Azimuth Adjustment

- Settings :
- Test tape : TTA-320
 - Test point : PHONES JACK
 - Adjustment location : Azimuth adjustment screw

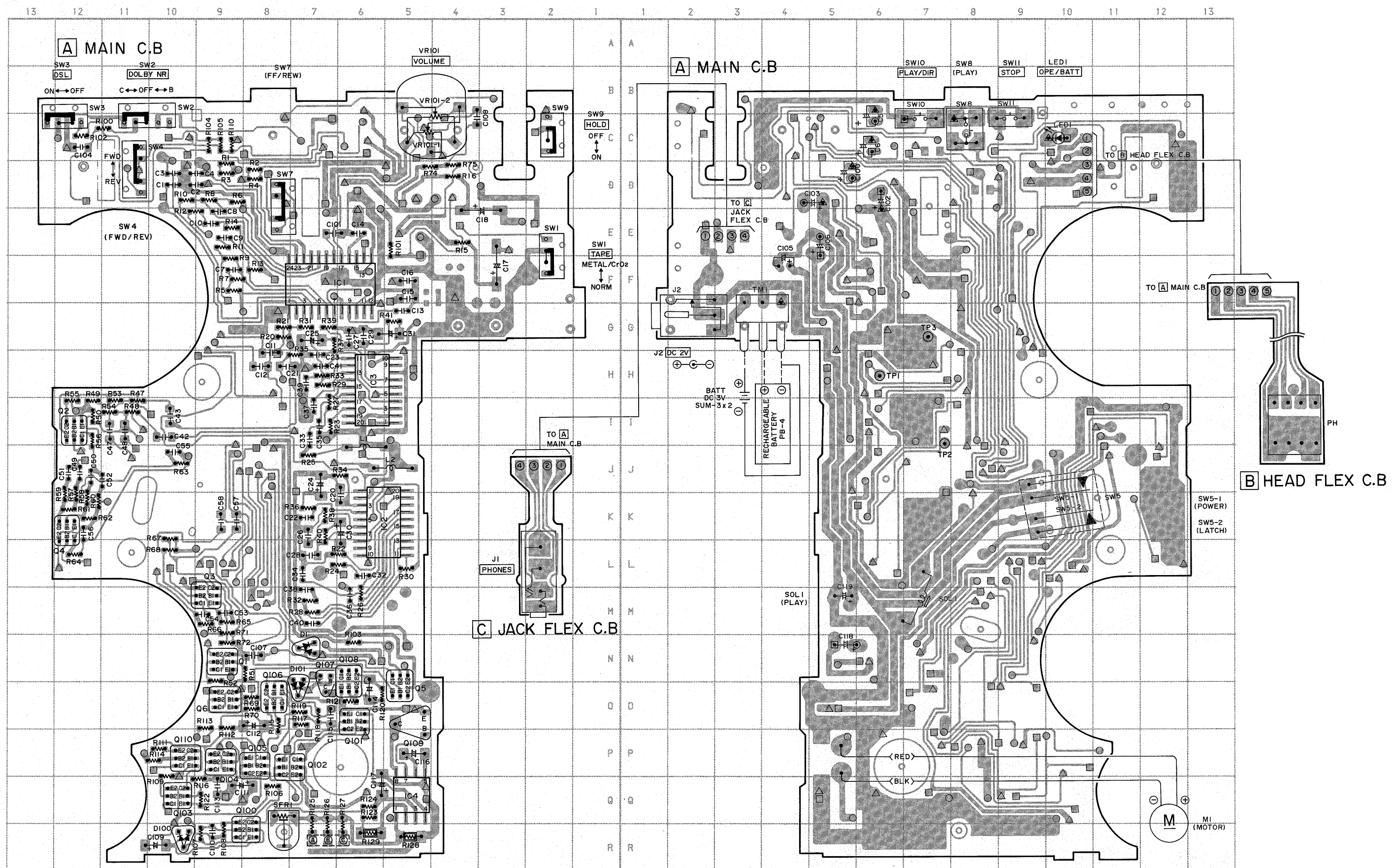
Method : Play the 8kHz signal of the test tape and adjust so the output is maximum and the waveforms in the Lissajours' figure are in phase.

4. Motor load Adjustment

Refer to the REF No. SI-88-037-Op of service technical information.

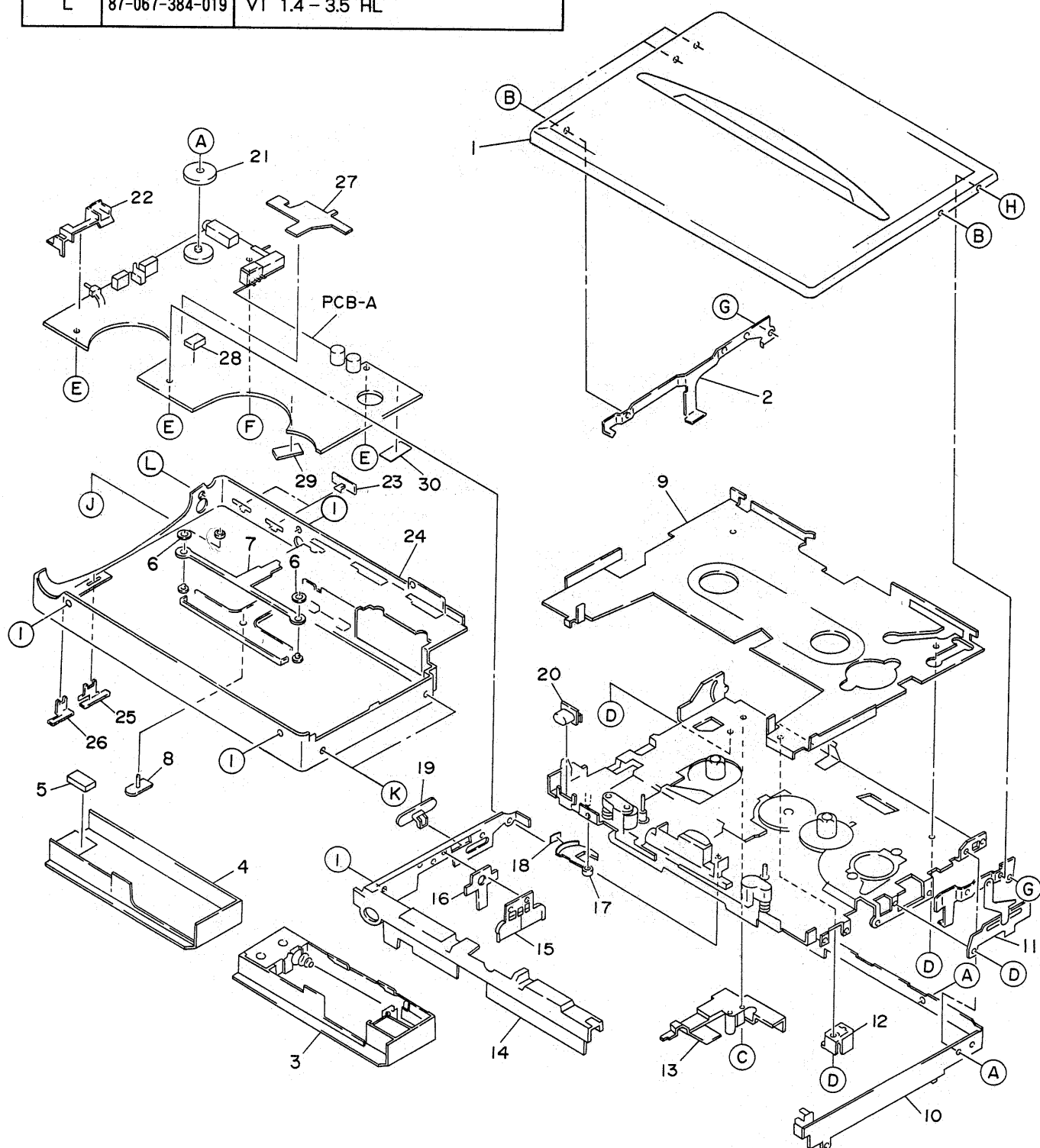


WIRING



EXPLODED VIEW - 1

REF. NO.	PART NO.	DESCRIPTION
A	87-067-511-019	S - SCREW + 1.4 - 2 (B)
B	87-067-753-019	V + 1.4 - 1.6 (B)
C	87-232-508-319	Q + 1.4 - 3.5H (3)
D	87-261-501-319	V + 1.4 - 1.6 (B)
E	87-067-732-019	VT 1.4 - 3 HL
F	87-067-437-019	SCREW SERRAT M1.4 - 2
G	87-067-738-019	SCREW HINGE 1.4 - 1 (B)
H	87-067-593-019	Q + 1.4 - 2 (B)
I	87-067-359-019	S - SCREW + 1.4 - 2.5 (B)
J	87-067-405-019	VT (C) 1.4 - 6 HL
K	87-067-595-019	SCREW HINGE M1.4 (B)
L	87-067-384-019	VT 1.4 - 3.5 HL

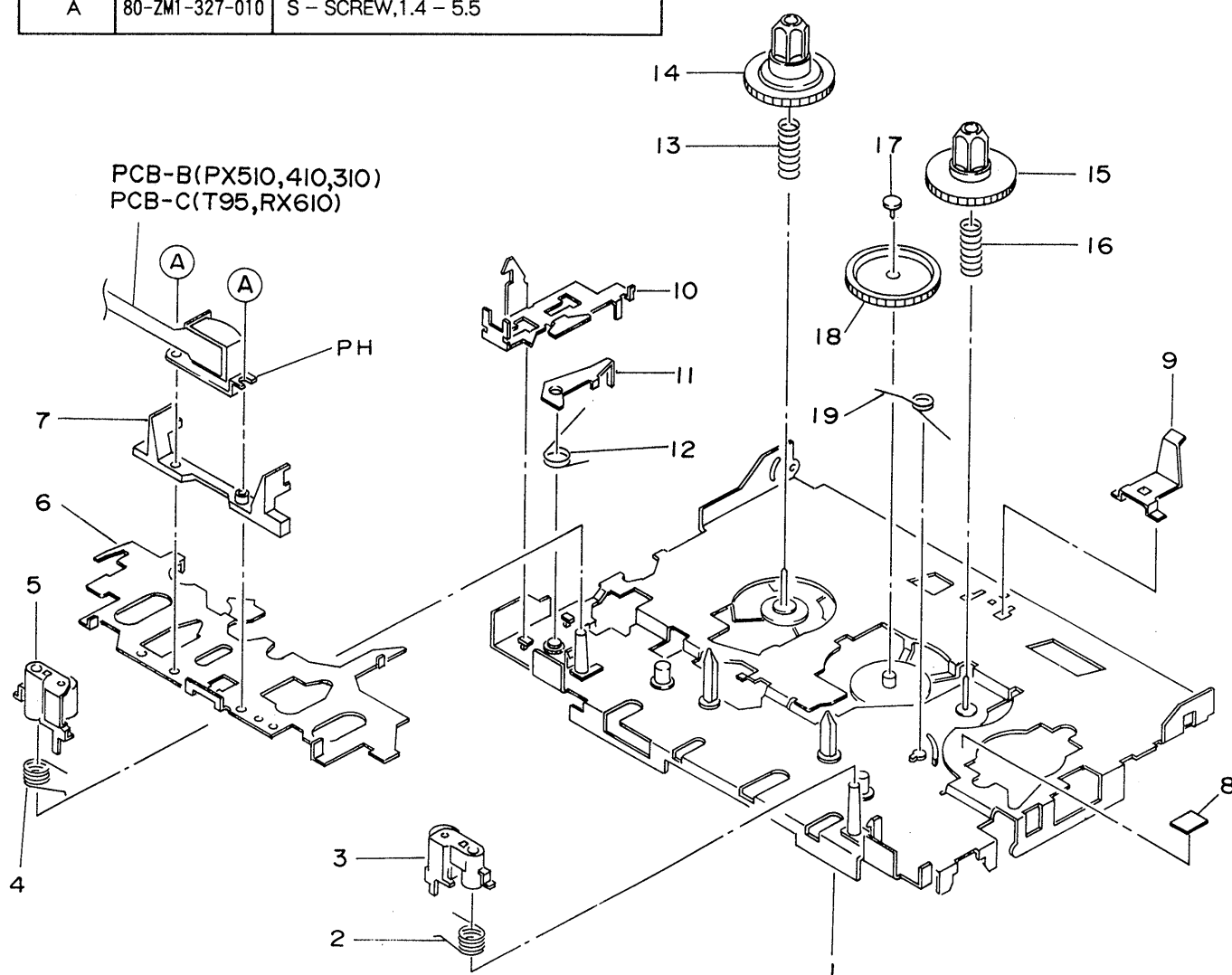


MECHANICAL PARTS LIST

PART NO. CHANGED TO	REF. NO.	PART NO.	DESCRIPTION	COMMON MODEL	Q'TY
	1-1	★09-027-985-010	CASSETTE LID ASSY	※	1
	1-2	★82-HKB-201-019	HOLDER, CASSETTE R		1
	1-3	★09-027-979-010	BATTERY BOX ASSY	※	1
	1-4	★82-HKB-007-019	BOX, BATTERY		1
	1-5	★82-HR4-218-019	CUSHION, S BATTERY		1
	1-6	★82-HR4-215-019	SHEET, DIA 2.4 - 6 - 0.3		2
	1-7	★82-HR4-211-019	LEVER, LOCK		1
	1-8	★82-HR4-018-019	KNOB, SLIDE BOX		1
	1-9	★82-HR4-209-019	HOLDER, CHASSIS		1
	1-10	★82-HR4-004-019	FRAME BOTTOM		1
	1-11	★82-HKB-204-010	SLIDE ARM ASSY		1
	1-12	★82-HR4-203-019	HOLDER, JACK DC		1
	1-13	★82-HR4-202-019	HOLDER, JACK HP		1
	1-14	★82-HR4-003-119	FRAME, CONTROL		1
	1-15	★82-HR4-010-019	KEY, CONTROL		1
	1-16	★82-HR4-214-019	SHEET, KEY		1
	1-17	★80-HK4-213-110	ARM, DR MONITOR		1
	1-18	★80-HK4-234-019	SHEET, DIRECTION		1
	1-19	★82-HR4-011-019	KNOB, SLIDE FR		1
	1-20	★82-HR4-012-019	BUTTON, EJECT		1
	1-21	★84-438-009-210	KNOB, VOLUME		1
	1-22	★82-HR4-210-010	HOLDER, LED		1
	1-23	★82-HR4-007-019	KNOB, SLIDE TAPE		2
	1-24	★82-HKA-002-019	CABINET, REAR (EXCEPT YJ1)	※	1
	1-24	★82-HKA-003-019	CABINET, REAR (YJ1)	※	1
	1-25	★82-HR4-009-019	KNOB, SLIDE RMT		1
	1-26	★82-HR4-008-019	KNOB, SLIDE DSL		1
	1-27	★82-HR4-216-019	SHEET, AF		1
	1-28	★82-HR4-222-019	CUSHION, S 12 - 5 - 2		1
	1-29	★82-HK9-213-019	HIMERON, 15 - 10		1
	1-30	★82-HR4-217-019	SHEET, 15 - 10		1
		★09-027-975-010	APPE SCREW KIT	※	1

EXPLODED VIEW - 2

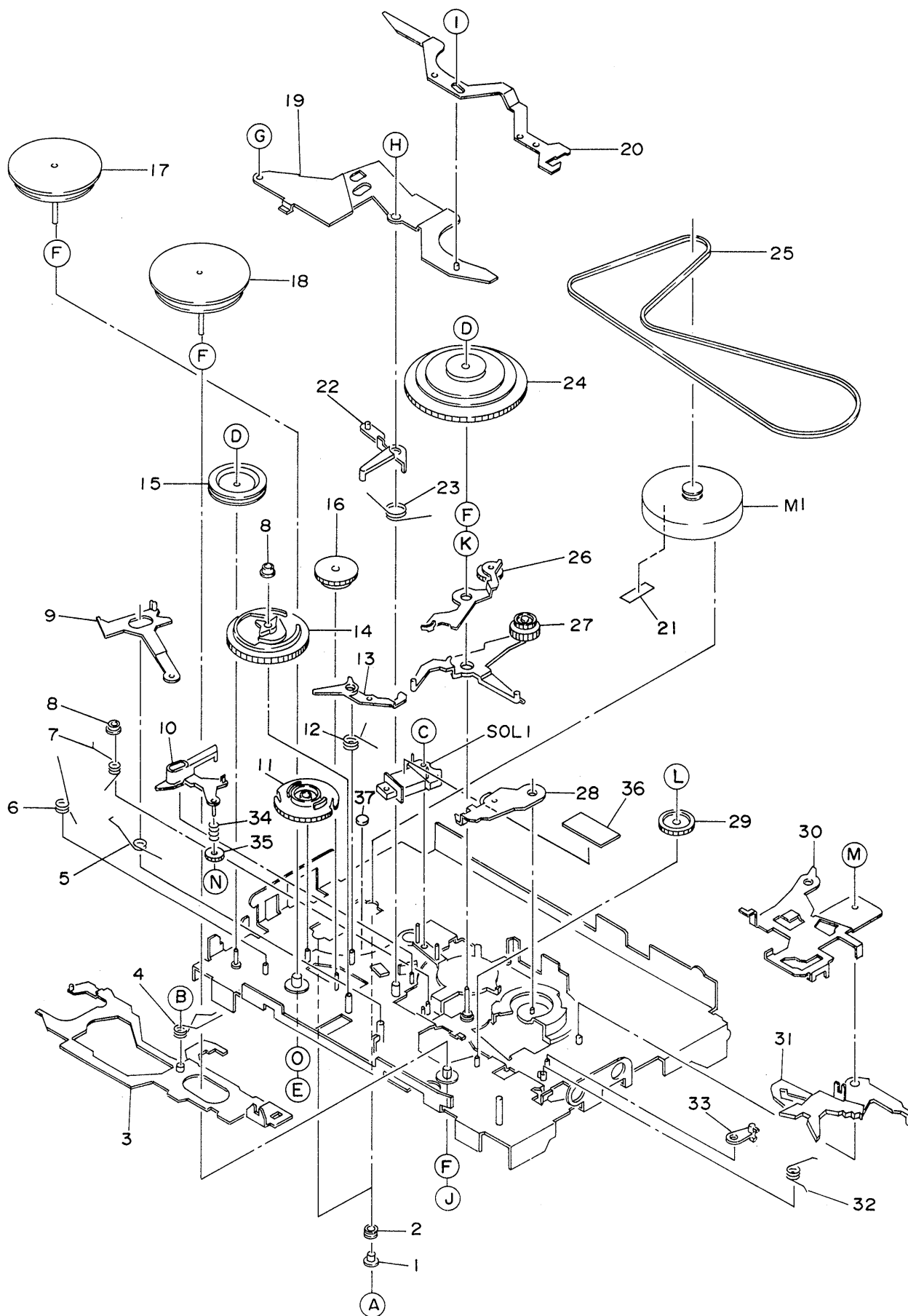
REF. NO.	PART NO.	DESCRIPTION
A	80-ZM1-327-010	S - SCREW, 1.4 - 5.5



PART NO. CHANGED TO	REF. NO.	PART NO.	DESCRIPTION	COMMON MODEL	Q'TY
	2-1	★80-ZM1-316-110	OUT - SERT ASSY		1
	2-2	★80-ZM1-329-010	T - SPRING, PINCH F		1
	2-3	★80-ZM1-221-110	LEVER PINCH F ASSY		1
	2-4	★80-ZM1-330-010	T - SPRING, PINCH R		1
	2-5	★80-ZM1-227-110	LEVER PINCH R ASSY		1
	2-6	★80-ZM1-319-010	CHASSIS SLIDE ASSY		1
	2-7	★80-ZM1-321-010	GUIDE, TAPE		1
	2-8	★87-067-790-010	SHEET 3 - 3 - 0.2		1
	2-9	★84-530-213-010	P - SPRING, PUSH A		1
	2-10	★80-ZM1-251-010	PLATE, EJECT		1
	2-11	★80-ZM1-252-010	LEVER, CONNECT		1
	2-12	★80-ZM1-287-010	T - SPRING, LOCK OFF		1
	2-13	★80-ZM1-283-010	C - SPRING, REVERSE REEL		1
	2-14	★80-ZM1-260-110	REEL, TABLE R		1
	2-15	★80-ZM1-259-010	REEL, TABLE F		1
	2-16	★80-ZM1-284-110	C - SPRING, FORWARD REEL		1
	2-17	---	CAP, CONNECT		1
	2-18	★80-ZM1-258-010	GEAR, CONNECT		1
	2-19	★80-ZM1-276-010	T - SPRING, PLAY		1

EXPLODED VIEW - 3

REF. NO.	PART NO.	DESCRIPTION	REF. NO.	PART NO.	DESCRIPTION	REF. NO.	PART NO.	DESCRIPTION
A	87-237-525-310	Q+1. 7-2. 5	F	80-ZM1-308-010	SHEET 1. 85-3. 45-0. 05	K	87-067-136-010	STE 1. 3-3. 7-0. 25
B	87-067-742-010	PW 2. 13-3. 5-0. 25(SLT)	G	87-232-508-310	Q+1. 4-3. 5(3)	L	87-067-516-010	PW 3-1. 58-0. 25(SLT)
C	87-067-246-010	V+1. 4-3. 7	H	87-268-505-310	V+1. 4-2. 5	M	80-ZM1-294-010	SPECIAL SCREW M1. 7-3-0. 2
D	87-544-440-010	PW 1. 2-4-0. 25(SLT)	I	87-067-895-010	PW 1. 5-4-0. 2 SLT	N	87-067-367-010	PW 0. 95-2. 6-0. 25C
E	87-067-788-010	SHEET 1. 15-3. 5-0. 3(CUT)	J	87-067-741-010	SHEET 1. 37-3-0. 5(CUT)	O	87-067-789-010	PW 1. 6-3. 45-0. 25



PART NO. CHANGED TO	REF. NO.	PART NO.	DESCRIPTION	COMMON MODEL	Q'TY
	3-1	★86-541-449-010	COLLAR, MOTOR B		2
	3-2	★86-511-445-010	G CUSHION, MOTOR		2
	3-3	★80-ZM1-244-110	LEVER DIRECTION ASSY		1
	3-4	★80-ZM1-282-310	T - SPRING, TAKE - UP		1
	3-5	★80-ZM1-273-010	T - SPRING, MAIN CAM		1
	3-6	★80-ZM1-275-010	T - SPRING, DIRECTION		1
	3-7	★80-ZM1-274-010	T - SPRING, AUTO		1
	3-8	---	COLLAR, PWB P		2
	3-9	★80-ZM1-263-110	ARM, MOTOR SW		1
	3-10	★80-ZM1-239-110	ARM, AUTO		1
	3-11	★80-ZM1-255-010	CAM, DIRECTION		1
	3-12	★80-ZM1-277-110	T - SPRING, CHANNEL LOCK		1
	3-13	★80-ZM1-261-110	ARM, DIRECTION LOCK		1
	3-14	★80-ZM1-253-010	CAM, MAIN		1
	3-15	★86-541-235-110	PULLEY, RELAY B		1
	3-16	★80-ZM1-257-010	GEAR, B		1
	3-17	80-ZM1-214-110	FLYWHEEL F ASSY		1
	3-18	80-ZM1-218-010	FLYWHEEL R ASSY		1
	3-19	★80-ZM1-265-210	PLATE HOLDER ASSY		1
	3-20	★80-ZM1-270-310	LEVER, LOCK OFF		1
	3-21	★80-ZM1-296-010	SHEET, MOTOR 16 - 5		1
	3-22	★80-ZM1-266-010	ARM, LOCK MD		1
	3-23	★80-ZM1-278-010	T - SPRING, PLUNGER ARM		1
	3-24	★80-ZM1-209-410	GEAR MAIN ASSY		1
	3-25	80-ZM1-291-010	BELT, SQ 72.9		1
	3-26	★80-ZM1-230-210	ARM TAKE - UP F ASSY		1
	3-27	★80-ZM1-241-110	ARM FF REW ASSY		1
	3-28	★80-ZM1-234-010	ARM TAKE - UP R ASSY		1
	3-29	★80-ZM1-256-110	GEAR, A		1
	3-30	★80-ZM1-269-110	PLATE, HOLDER LEFT		1
	3-31	★80-ZM1-264-310	LEVER, FF REW		1
	3-32	★80-ZM1-281-010	T - SPRING, FF REW		1
	3-33	★80-ZM1-262-010	LEVER, FR STOP		1
	3-34	★80-ZM1-272-010	C - SPRING, AUTO		1
	3-35	★80-ZM1-240-010	GEAR, AUTO		1
	3-36	★80-ZM1-306-010	SHEET 5 - 20 - 0.05		1
	3-37	★80-ZM1-309-010	CUSHION - G 3 - 0.5		1

SPRING APPLICATION POSITION

