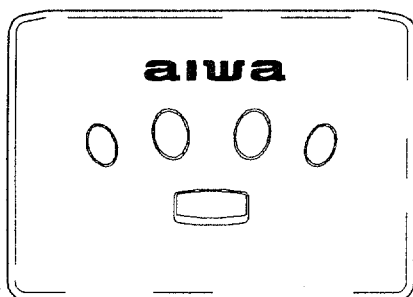


aiwa



HS-PX677




STEREO CASSETTE PLAYER

• BASIC TAPE MECHANISM: 5ZM-2 P3

• TYPE: AK1

SPECIFICATIONS

Maximum output:	5 mW + 5 mW (EIAJ 16 ohms)
Power source:	DC 1.2V using the supplied rechargeable battery NB-5G, DC 1.5V using an R6 (size AA) dry cell battery, AC house current using an optional AC adaptor
Battery life (EIAJ 1 mW):	Approx. 9 hours using a fully recharged NB-5G rechargeable battery, Approx. 31 hours using an LR6 (size AA) alkaline battery
Maximum dimensions (W x H x D):	111.9 x 80.9 x 21.3 mm (4 ¹ / ₂ x 3 ¹ / ₄ x 27 ¹ / ₃₂ in.)
Weight:	Approx. 177 g, 6.2 oz (including the rechargeable battery, excluding the battery case)

- Design and specifications are subject to change without notice.
- Dolby noise reduction manufactured under license from Dolby Laboratories Licensing Corporation.
"DOLBY" and the double-D symbol  are trademarks of Dolby Laboratories Licensing Corporation.

CAUTIONS WHEN REPAIRING

If the main board is opened while repairing the unit, operations cannot be checked since the motor terminals, etc. are soldered.

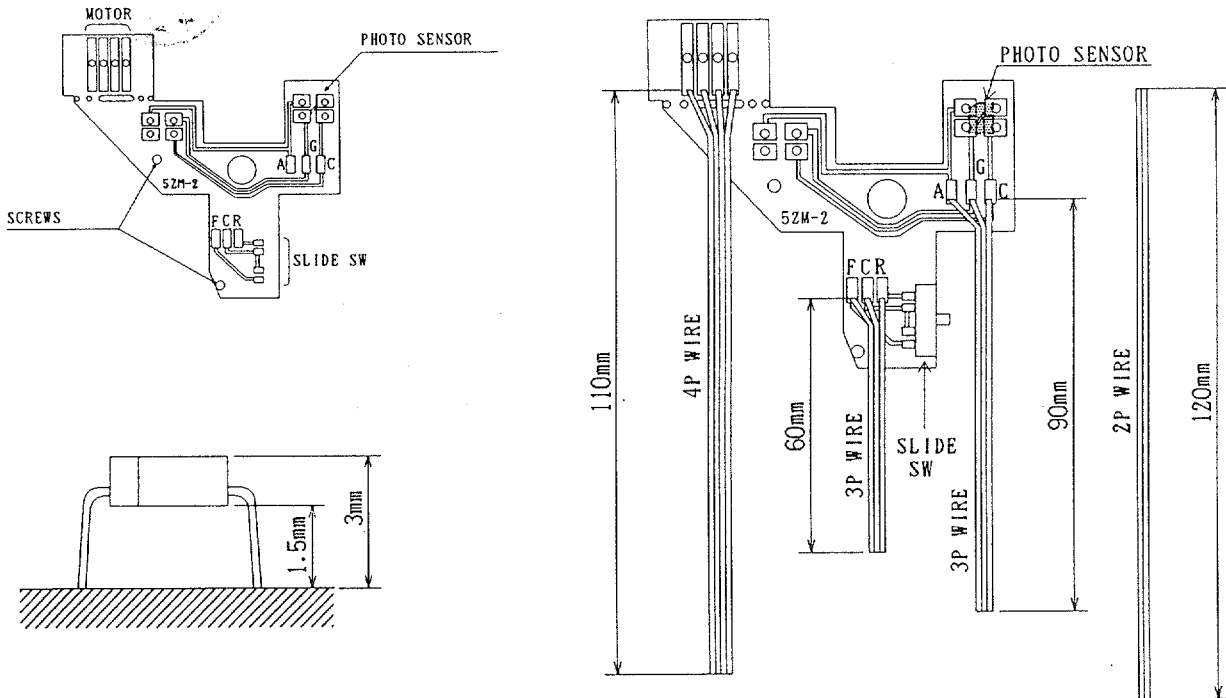
Use a jig (for the 5ZM-2) to check operation with the main board opened.

Part Name: JIG, KIT 5ZM-2 Part No.: SV-J00-006-010

1) Assembling the Jig

Assemble the jig, referring to the following diagram.

- ① Divide the 12-pin cable to create one 4-pin wire, two 3-pin wires and one 2-pin wire.
- ② Solder a photosensor to the jig board lifting it approx. 1.5mm above the board.
- ③ Solder a slide SW (F/R SW) to the jig board.
- ④ Solder each wire to the soldered sections as shown in the diagram.



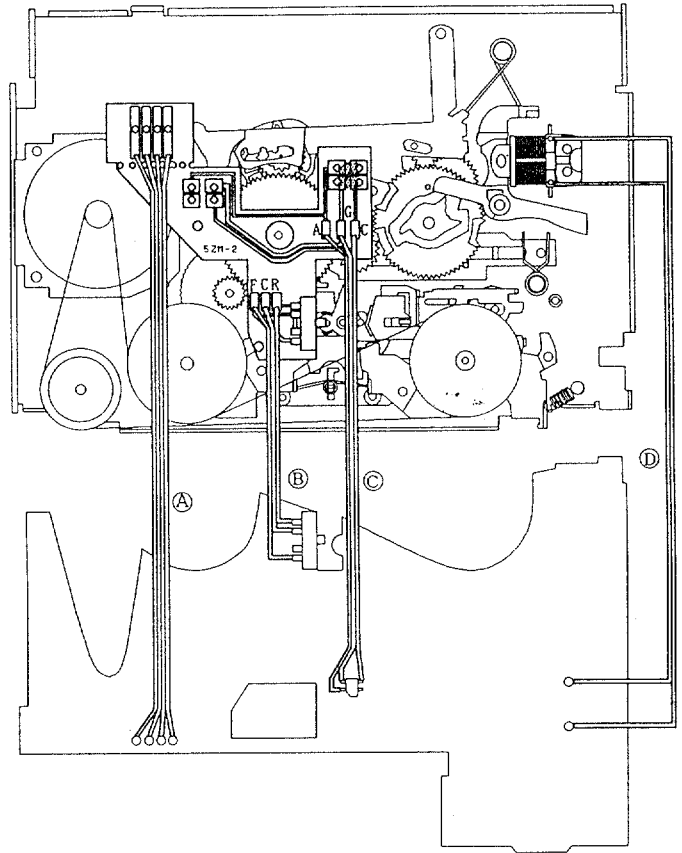
2) Attaching the Jig

- ① Fix the jig board to mechanism using the main board retaining screws.
- ② Solder the motor terminals.
- ③ Solder wire ① for the motor to the motor terminals.
- ④ Solder wire ② for the F/R SW to each terminal (FCR) of the F/R SW on the main board.
- ⑤ Solder wire ③ for the photosensor to the photosensor on the main board.
- ⑥ Solder 2-pin wire ④ to the plunger and the plunger terminal on the main board.

3) Using the Jig

When the board is opened, the operation switches are at the back of the board. To increase working efficiency, use the remote control to operate the unit.

- ① Connect the remote control to the main unit.
- ② Short the cassette switch terminals.
- ③ Slide the F/R SW on the main board to its center.



Caution: Tighten the screws so the board is parallel to the mechanism. If the board is not flat the photosensor may not operate.

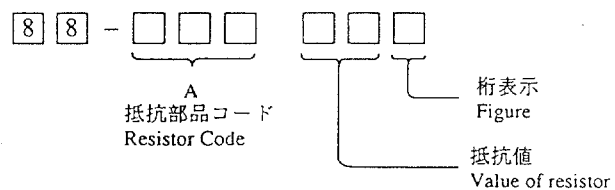
ELECTRICAL MAIN PARTS LIST

If can't understand for Description please kindly refer to "REFERENCE NAME LIST".

REF. NO.	PART NO.	KANRI NO.	DESCRIPTION	REF. NO.	PART NO.	KANRI NO.	DESCRIPTION
IC				C158	87-016-460-080		C-CAP,S 0.22-16 K B
	87-A20-340-010		C-IC,BA3612AKV	C159	87-012-274-080		C-CAP,U 1000P-50 K B
	87-A20-339-040		C-IC,NJM2185V	C160	87-010-746-080		C-CAP,TN 10-4 M 125
	87-A20-341-010		C-IC,MSM6576-71-GS2K	C161	87-010-831-080		C-CAP,U 0.1-16 Z F
	87-A20-090-040		C-IC,PST9010	C163	87-012-280-080		C-CAP,U 3300P-50 K B
	87-002-406-080		C-IC,TPIC326ADB	C164	87-012-280-080		C-CAP,U 3300P-50 K B
TRANSISTOR				C201	87-010-805-080		C-CAP,S 1-16 Z F
	87-026-429-010		C-TR,RN2311	C202	87-010-274-080		C-CAP,TN 3.3-4 ECS
	87-026-417-080		C-TR,RN1310	C203	87-016-461-080		C-CAP,S 0.47-16 Z F
	87-026-480-080		C-TR,RN4605	C204	87-016-461-080		C-CAP,S 0.47-16 Z F
	87-026-423-080		C-TR,RN2305	C205	87-010-805-080		C-CAP,S 1-16 Z F
	87-026-585-080		C-TR,IMX1 HQQ	C206	87-010-746-080		C-CAP,TN 10-4 M 125
	89-113-625-080		C-TR,2SA1362GR	C301	87-010-504-080		C-CAP,TN 0.47-25 M ECS
	89-342-132-080		C-TR,2SC4213B	C302	87-010-831-080		C-CAP,U 0.1-16 Z F
	89-212-184-080		C-TR,2SB1218B	C303	87-010-829-080		C-CAP,U 0.047-16 Z F
	87-026-648-080		C-TR,UPA608T	C304	87-016-224-080		C-CAP,TN 22-2.5 M
	87-A30-068-080		C-TR,2SD1819AR	C305	87-012-286-080		C-CAP,U 0.01-25 K B
	89-413-284-080		C-TR,2SD1328T	C306	87-010-831-080		C-CAP,U 0.1-16 Z F
	89-341-164-080		C-TR,2SC4116Y	C307	87-015-924-080		C-CAP,TN 0.33-25 ECS
DIODE				C308	87-010-504-080		C-CAP,TN 0.47-25 M ECS
	87-017-779-080		C-DIODE,1SS355	C309	87-010-829-080		C-CAP,U 0.047-16 Z F
	87-001-553-080		C-DIODE,1SS322	C310	87-016-461-080		C-CAP,S 0.47-16 Z F
	87-020-575-080		C-ZENER,02CZ2.4Z	C401	87-010-746-080		C-CAP,TN 10-4 M 125
MAIN C.B				C402	87-012-334-080		C-CAP,U 220P-50 J SL
C101	87-012-274-080		C-CAP,U 1000P-50 K B	C403	87-010-805-080		C-CAP,S 1-16 Z F
C102	87-012-274-080		C-CAP,U 1000P-50 K B	C404	87-016-296-080		C-CAP,TN 22-4 M
C103	87-012-274-080		C-CAP,U 1000P-50 K B	C405	87-010-805-080		C-CAP,S 1-16 Z F
C104	87-012-274-080		C-CAP,U 1000P-50 K B	D403	87-070-079-080		C-LED,SML-010VT RED
C105	87-016-224-080		C-CAP,TN 22-2.5 M	J101	87-A60-272-010		JACK,3.5 ST 4P
C106	87-016-224-080		C-CAP,TN 22-2.5 M	L401	87-005-906-080		C-COIL,S 10UH K LK2125
C107	87-A10-031-080		C-CAP,U 0.01-25 K B	L402	87-A50-112-080		C-COIL,DDCONV 2V
C108	87-A10-031-080		C-CAP,U 0.01-25 K B	PS201	87-A90-273-010		SNSR, 5164K-F1
C109	87-010-831-080		C-CAP,U 0.1-16 Z F	R208	87-022-255-080		C-RES,U 47K-1/16W F
C110	87-010-831-080		C-CAP,U 0.1-16 Z F	R316	87-022-043-080		M-RES,M/F 8.2K-1/8W J
C111	87-010-831-080		C-CAP,U 0.1-16 Z F	S101	87-036-415-080		C-SW,SL 1-1-3 SSSS81
C112	87-010-831-080		C-CAP,U 0.1-16 Z F	S102	85-HK3-606-010		SW,LEAF (5ZM-2)
C113	87-010-831-080		C-CAP,U 0.1-16 Z F	S103	87-036-373-080		C-SW,SL 1-1-2 SSSS81543A
C114	87-010-831-080		C-CAP,U 0.1-16 Z F	S201	87-036-123-080		C-SW,SL 1-1-2 SSSS81
C115	87-016-491-080		C-CAP,S 0.22-16 Z F	S202	87-A90-232-080		C-SW,TACT SKQRAA
C116	87-016-491-080		C-CAP,S 0.22-16 Z F	S203	87-A90-232-080		C-SW,TACT SKQRAA
C117	87-A10-004-080		C-CAP,TN 220-2.5 M (C)	S204	87-A90-232-080		C-SW,TACT SKQRAA
C118	87-A10-004-080		C-CAP,TN 220-2.5 M (C)	S205	87-A90-232-080		C-SW,TACT SKQRAA
C119	87-016-224-080		C-CAP,TN 22-2.5 M	S206	87-036-426-080		C-SW,PUSH-2-7 SPPW9
C120	87-010-805-080		C-CAP,S 1-16 Z F	S207	87-036-203-180		C-SW,SL 1-1-3 SSSS81
C121	87-016-461-080		C-CAP,S 0.47-16 Z F	S208	87-036-428-180		C-SW,SL 1-1-2 SSQ
C122	87-010-831-080		C-CAP,U 0.1-16 Z F	SFR301	87-A90-104-080		C-SFR,6.8K H CVR-32
C123	87-010-805-080		C-CAP,S 1-16 Z F	VR101	87-A90-231-080		VR,RTRY 20KCX2
C124	87-012-286-080		C-CAP,U 0.01-25 K B	X201	81-HK1-607-010		X'TAL 32.768KHZ
C125	87-A10-031-080		C-CAP,U 0.01-25 K B				
C126	87-010-831-080		C-CAP,U 0.1-16 Z F				
C127	87-016-317-080		C-CAP,TN 2.2-6.3 M				
C128	87-010-805-080		C-CAP,S 1-16 Z F				
C129	87-010-805-080		C-CAP,S 1-16 Z F				
C130	87-010-805-080		C-CAP,S 1-16 Z F				
C131	87-A10-251-080		C-CAP,TN 33-2.5 A				
C132	87-010-805-080		C-CAP,S 1-16 Z F				
C133	87-016-504-080		C-CAP,TN 6.8-4 M				
C134	87-010-831-080		C-CAP,U 0.1-16 Z F				
C151	87-010-805-080		C-CAP,S 1-16 Z F				
C152	87-010-805-080		C-CAP,S 1-16 Z F				
C153	87-012-272-080		C-CAP,U 680P-50 K B				
C154	87-012-272-080		C-CAP,U 680P-50 K B				
C155	87-016-526-080		C-CAP,S 0.47-16 BK				
C156	87-016-526-080		C-CAP,S 0.47-16 BK				
C157	87-016-460-080		C-CAP,S 0.22-16 K B				

○ チップ抵抗部品コード / CHIP RESISTOR PART CODE

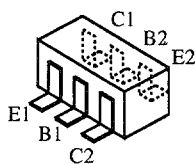
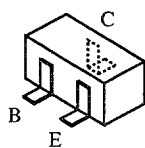
チップ抵抗部品コードの成り立ち
Chip Resistor Part Coding



チップ抵抗
Chip resistor

容量 Wattage	種類 Type	許容誤差 Tolerance	記号 Symbol	寸法 / Dimensions (mm)			抵抗コード : A Resistor Code: A	
				外形 / Form	L	W		t
1/16W	1608	±5%	CJ		1.6	0.8	0.45	108
1/10W	2125	±5%	CJ		2	1.25	0.45	118
1/8W	3216	±5%	CJ		3.2	1.6	0.55	128

TRANSISTOR ILLUSTRATION

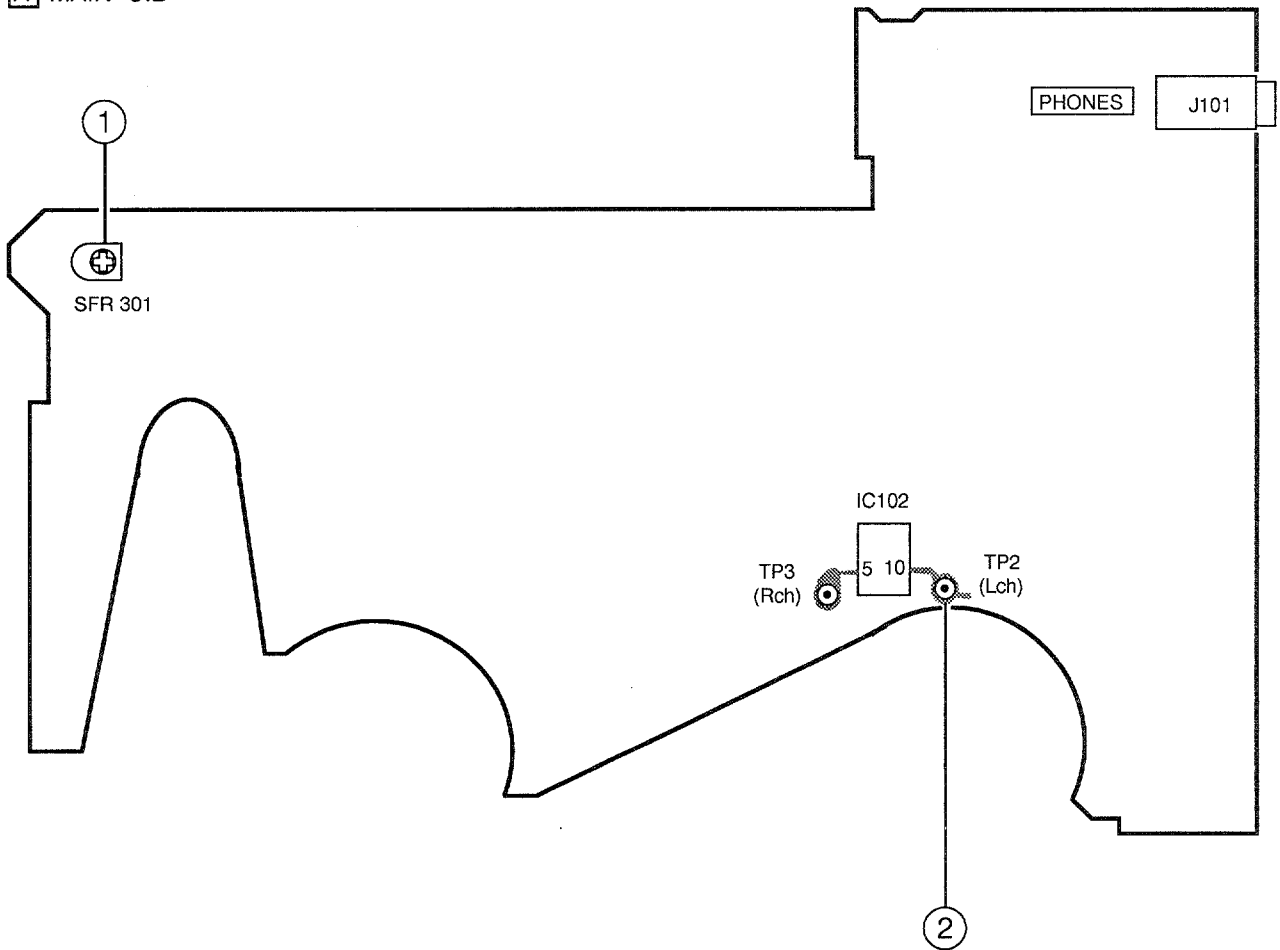


2SA1362
2SB1218
2SC4213
2SC4116
2SD1819
2SD1328
RN1310
RN2305
RN2311

IMX1
RN4605
UPA608

ADJUSTMENT

A MAIN C.B



<TAPE PLAYER SECTION>

1. Tape Speed Adjustment

- Settings :
- Test tape : TTA-100
 - Test point : PHONES JACK (J101)
 - Adjustment location : SFR301
 - S-BASS : OFF
 - DOLBY SW : OFF
 - EAR GUARD : OFF
 - TAPE SELECTOR : NORM
 - DIRECTION : FWD, REV
 - VOLUME : NON-CLIP

Method : Play back the test tape and adjust for $3015 \pm 10\text{Hz}$ (FWD) and $3015 \pm 45\text{Hz}$ (REV).

2. Dolby Level Check

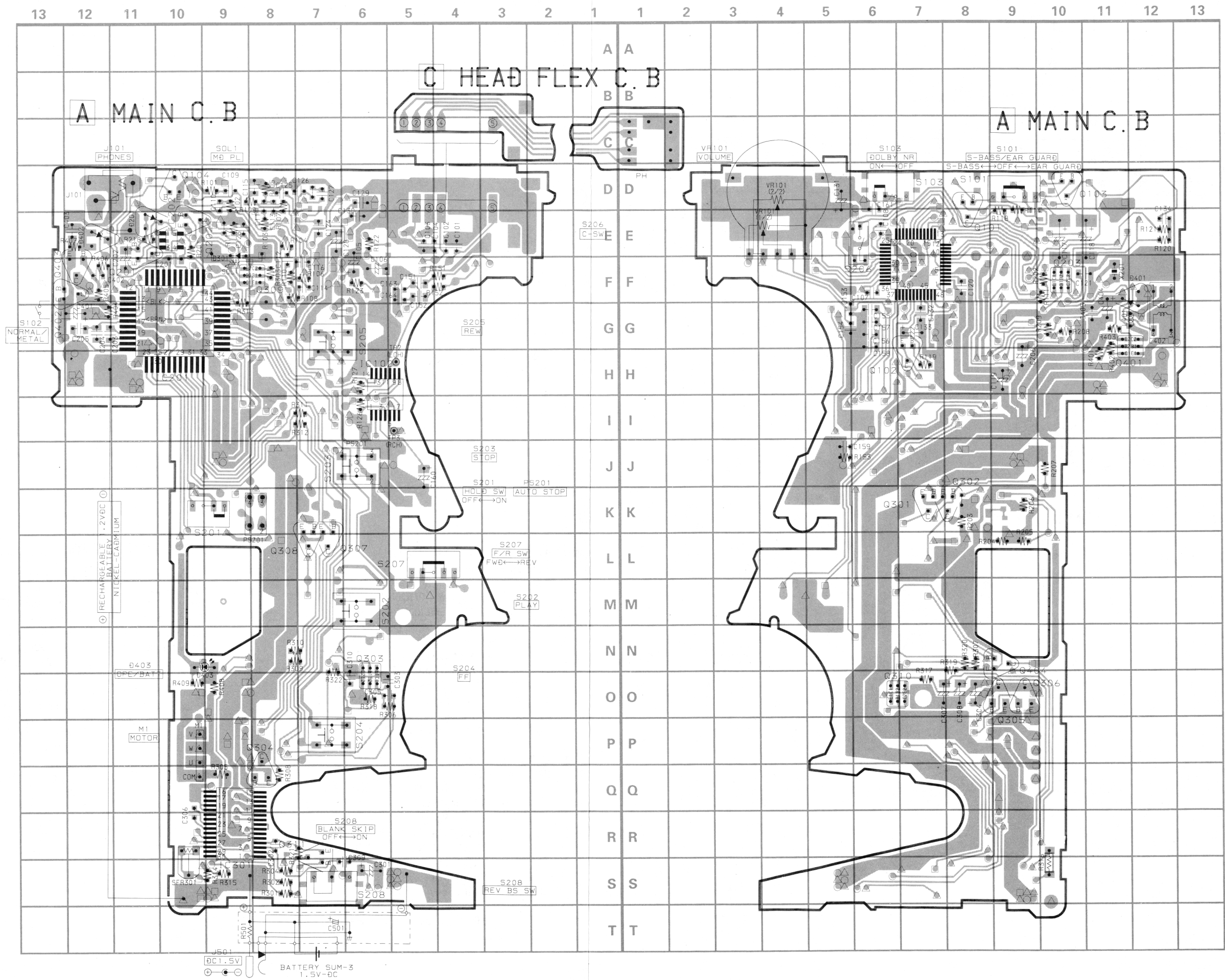
- Settings :
- Test tape : TTA-200
 - Test point : TP2 (Lch), TP3 (Rch)
 - DOLBY SW : OFF
 - S-BASS : OFF
 - EAR GUARD : OFF
 - DIRECTION : FWD, REV
 - MUSIC SLECT : FLAT
 - VOLUME : MIN "0"

Method : Connect a coupling capacitor ($10\mu\text{F}/16\text{V}$) between the test point and AC volt meter. Check the test point voltage for $31.6\text{mV} \pm 1.0\text{dB}$ (FWD and REV).

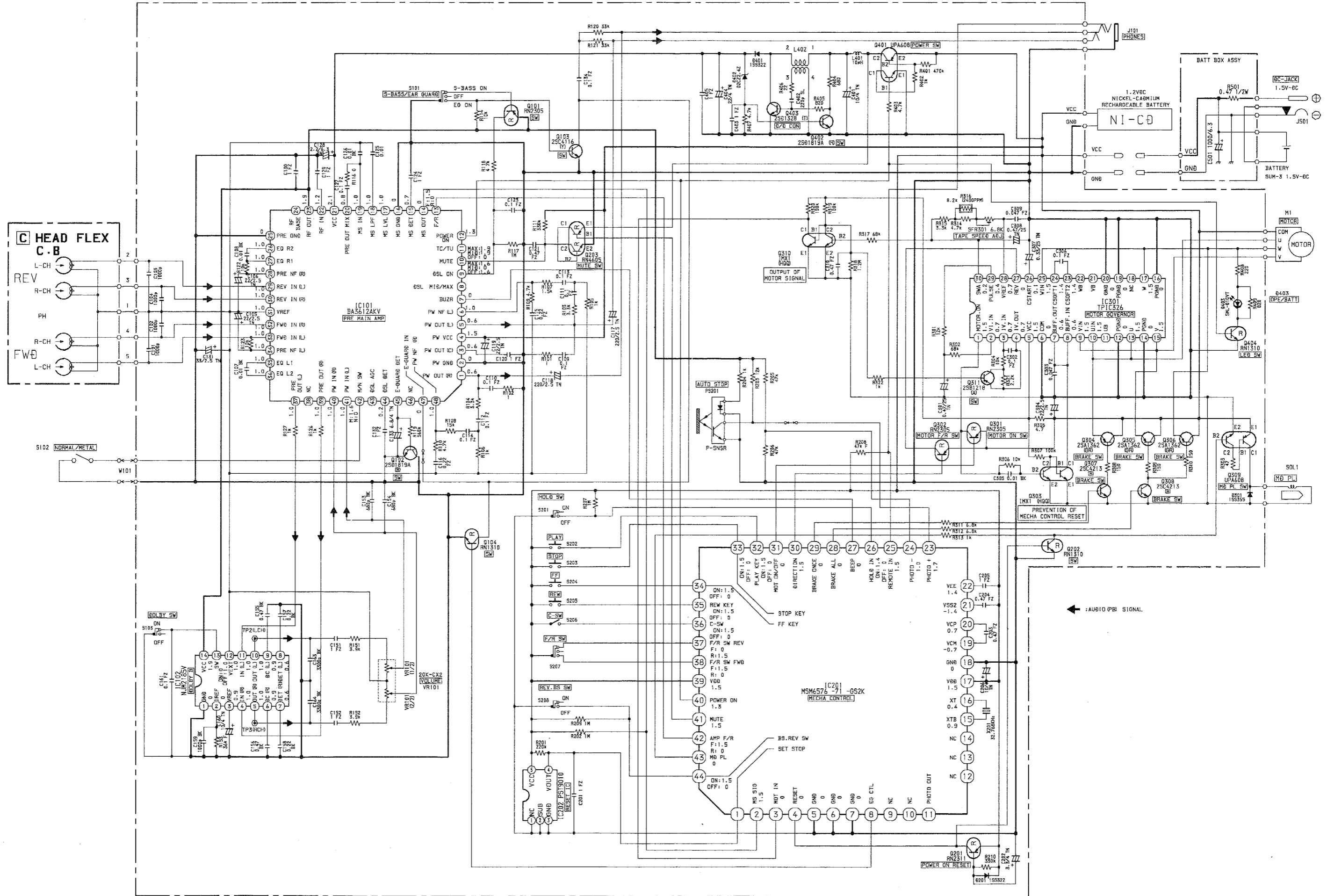
PRACTICAL SERVICE FIGURE

<TAPE PLAYER SECTION>

Tape speed :	$3015\text{Hz} \pm 50\text{Hz}$
Wow & flutter :	Less than 0.47% (RMS)
Take-up torque :	18 ~ 25g-cm (FWD, REV)
F.F torque :	40 ~ 90g-cm
REW torque :	40 ~ 90g-cm
Back tension :	1 ~ 2g-cm (FWD, REV)
S/N ratio :	More than 43dB (DC, PB)
Distortion :	Less than 3.0% (DC, PB)
Noise level :	Less than 3.0mV (Vol MAX, DC ,PB)
Frequency response :	$63\text{Hz} \pm 4\text{dB} \sim 8\text{kHz} \pm 4\text{dB}$ (TTA-320, NORMAL) $63\text{Hz} \pm 4\text{dB} \sim 8\text{kHz} + 4 / - 6\text{dB}$ (TTA-310, CrO2)



SCHEMATIC DIAGRAM - 1 (MAIN)



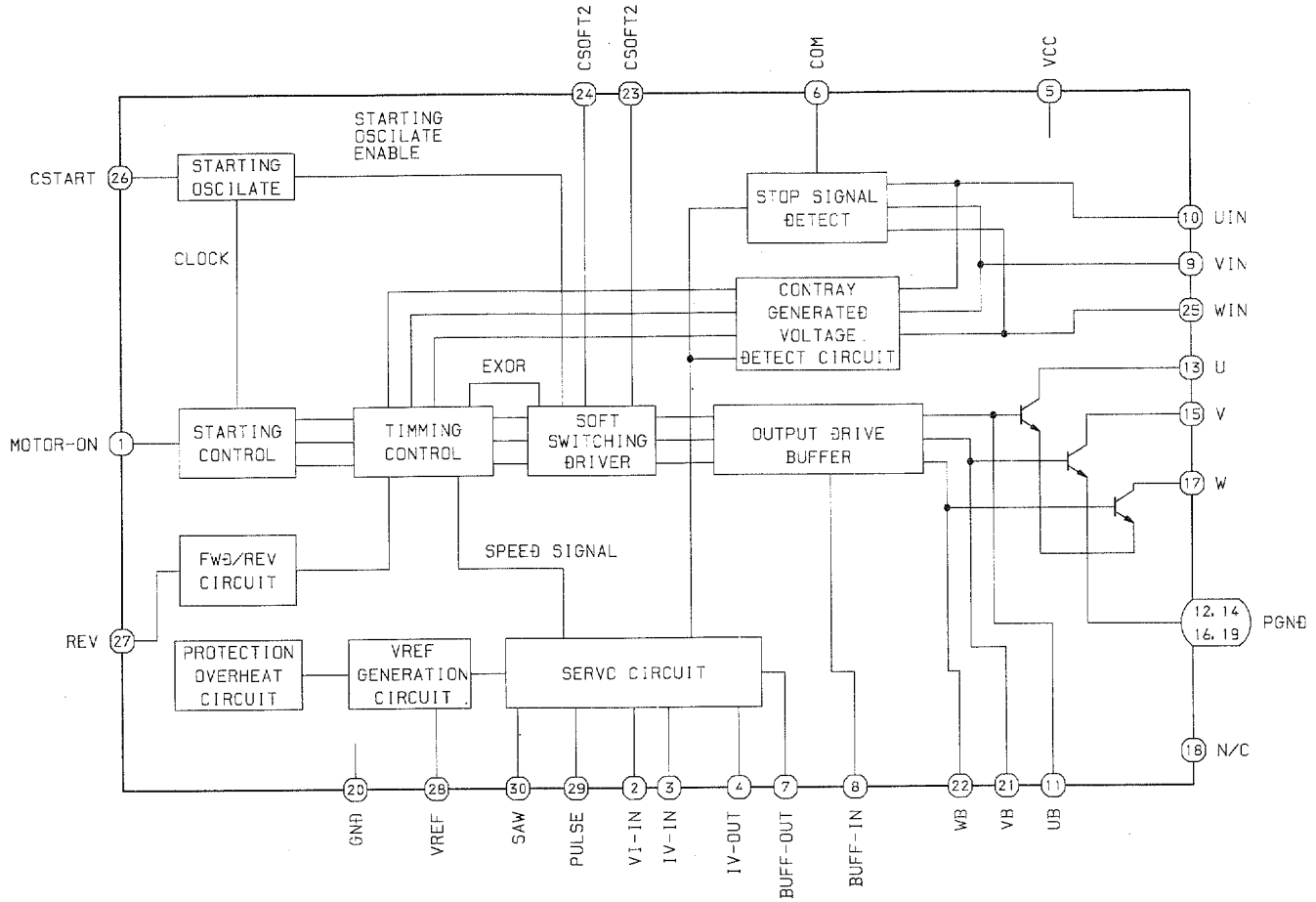
IC DESCRIPTION
IC, MSM6576-71-GS2K

Pin No.	Pin Name	I/O	Description
1	SET STOP	I	L Input to Stop.
2	MS SIG	I	H: Music L: No Music
3	MOT IN	I	Motor Rotation Detection.
4	RESET	I	Reset Input (H: Reset).
5	GND	-	Test Terminal.
6	GND	-	Test Terminal.
7	GND	-	Test Terminal.
8	EG CTL	O	Not Used.
9	NC	-	Not Used.
10	NC	-	Not Used.
11	PHOTO OUT	O	Not Used.
12	NC	-	Not Used.
13	NC	-	Not Used.
14	NC	-	Not Used.
15	XTB	I/O	Oscillator Connection Terminal (32.768kHz).
16	XT		
17	VDD	-	Power Supply Input (1.5V).
18	GND	-	GND.
19	VCM	-	Inner Potential Condenser Terminal.
20	VCP		
21	VSS2	-	GND.
22	VEE	-	Internal Logic Power Supply Input.
23	PHOTO +	I	Photo Sensor Input.
24	PHOTO -		
25	REMOTE IN	I	Remote Control Key Input.
26	HOLD IN	I	H: Hold On L: Hold Off.
27	BEEP	O	Alarm Output.
28	BRAKE ALL	O	H: Brake On L: Brake Off.
29	BRAKE ONCE	O	H: Brake On L: Brake Off.
30	DIRECTION	O	H: Forward Rotation L: Reverse Rotation.
31	MOT ON/OFF	O	H: Motor Off L: Motor On.
32	PLAY KEY	I	Play Key Input Body Side.
33	STOP KEY	I	Stop Key Input Main Body.
34	FF KEY	I	FF Key Input Main Body.
35	REW KEY	I	REW Key Input Main Body.
36	C-SW	I	H: Cassette L: No Cassette.
37	F/R SW REV	I	H: Rev Play L: Except Rev Play.
38	F/R SW FWD	I	H: FWD Play L: Except FWD Play.
39	VDD	-	Power Supply Input (1.5V).
40	POWER ON	O	H: Power On L: Power Off.

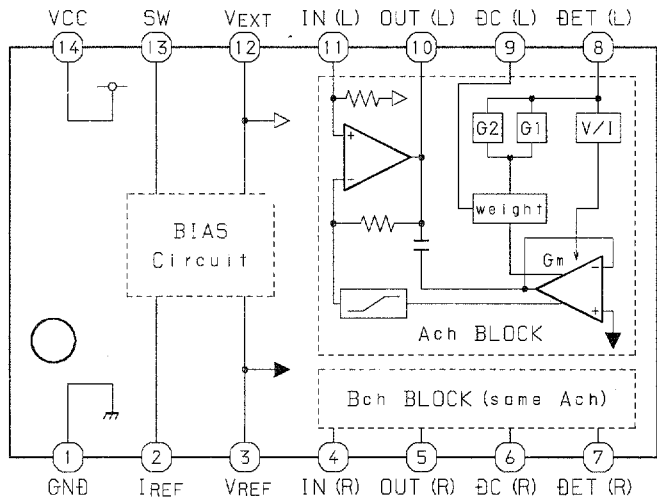
Pin No.	Pin Name	I/O	Description
41	MUTE	O	H: Mute Off L: Mute On.
42	AMP F/R	O	H: FWD L: REV.
43	MD PL	O	H: Plunger On L: Plunger Off.
44	BS.REV SW	I	H: BS On Consecutive L: BS Off.

IC BLOCK DIAGRAM

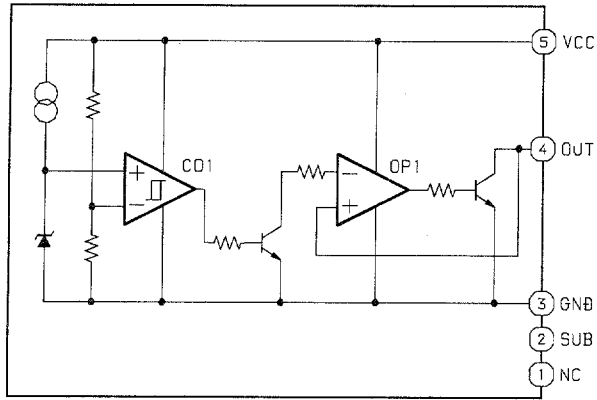
IC, TPIC326ADB



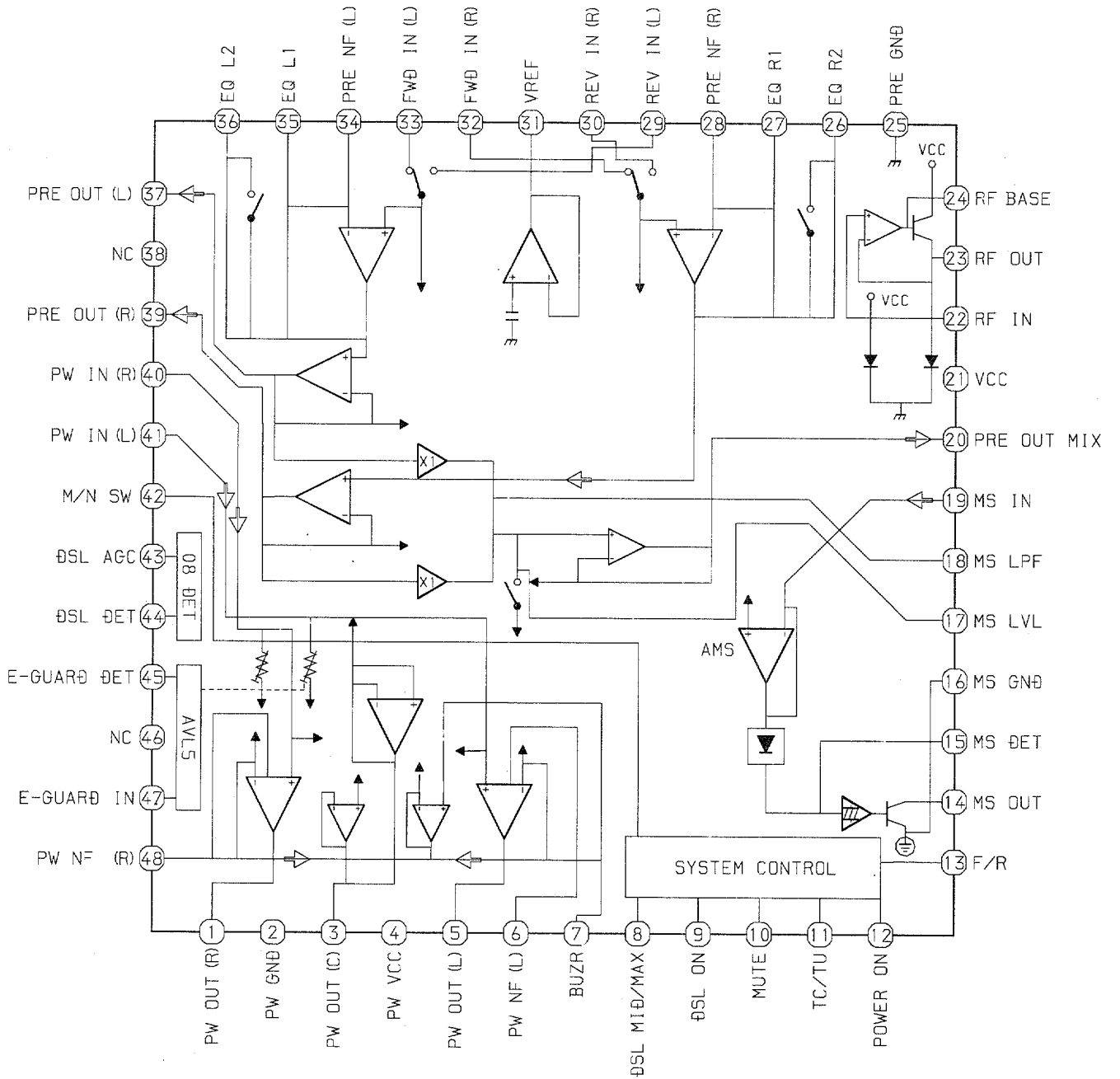
IC, NJM2185V



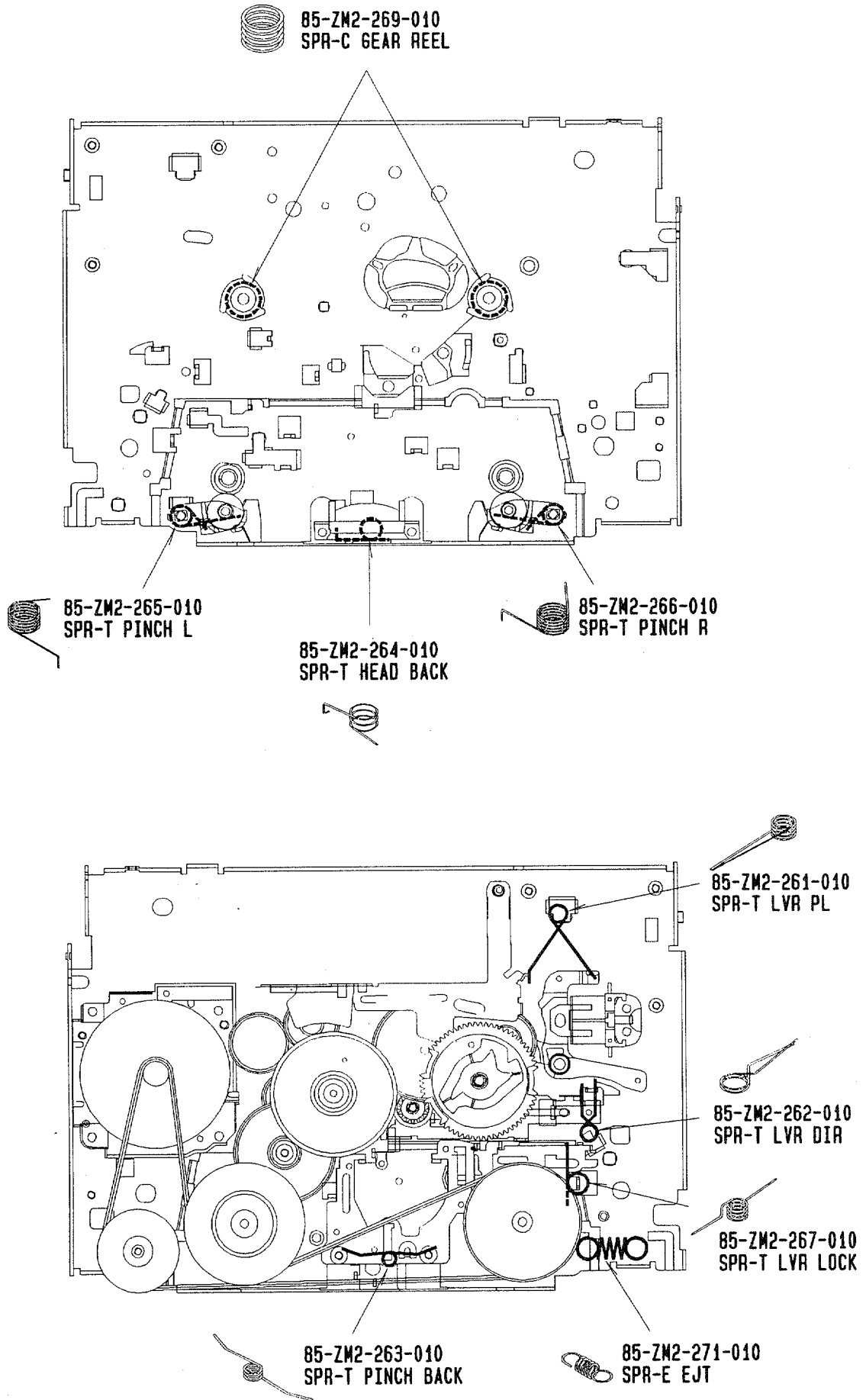
IC, PST9010



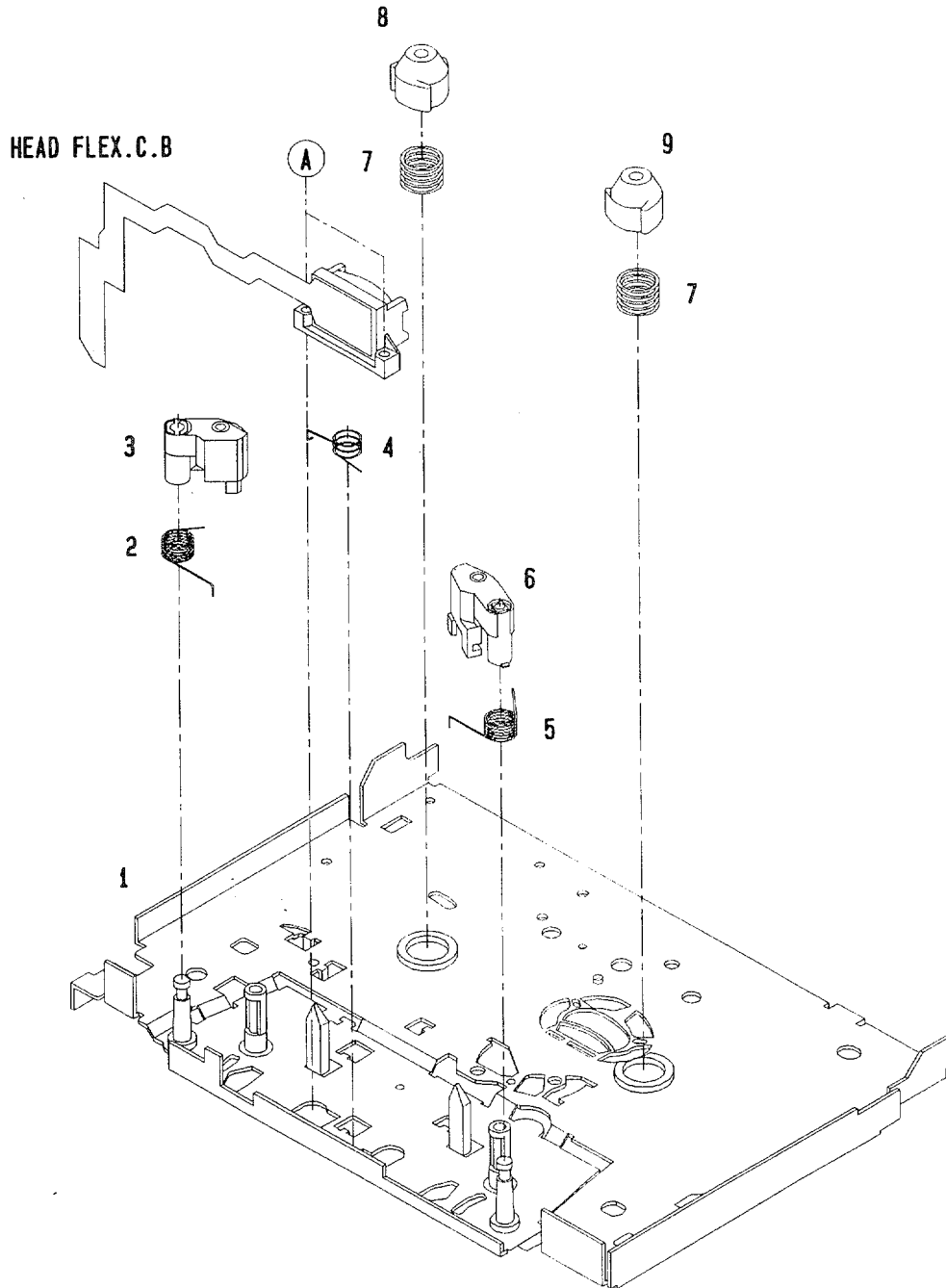
IC, BA3612AKV

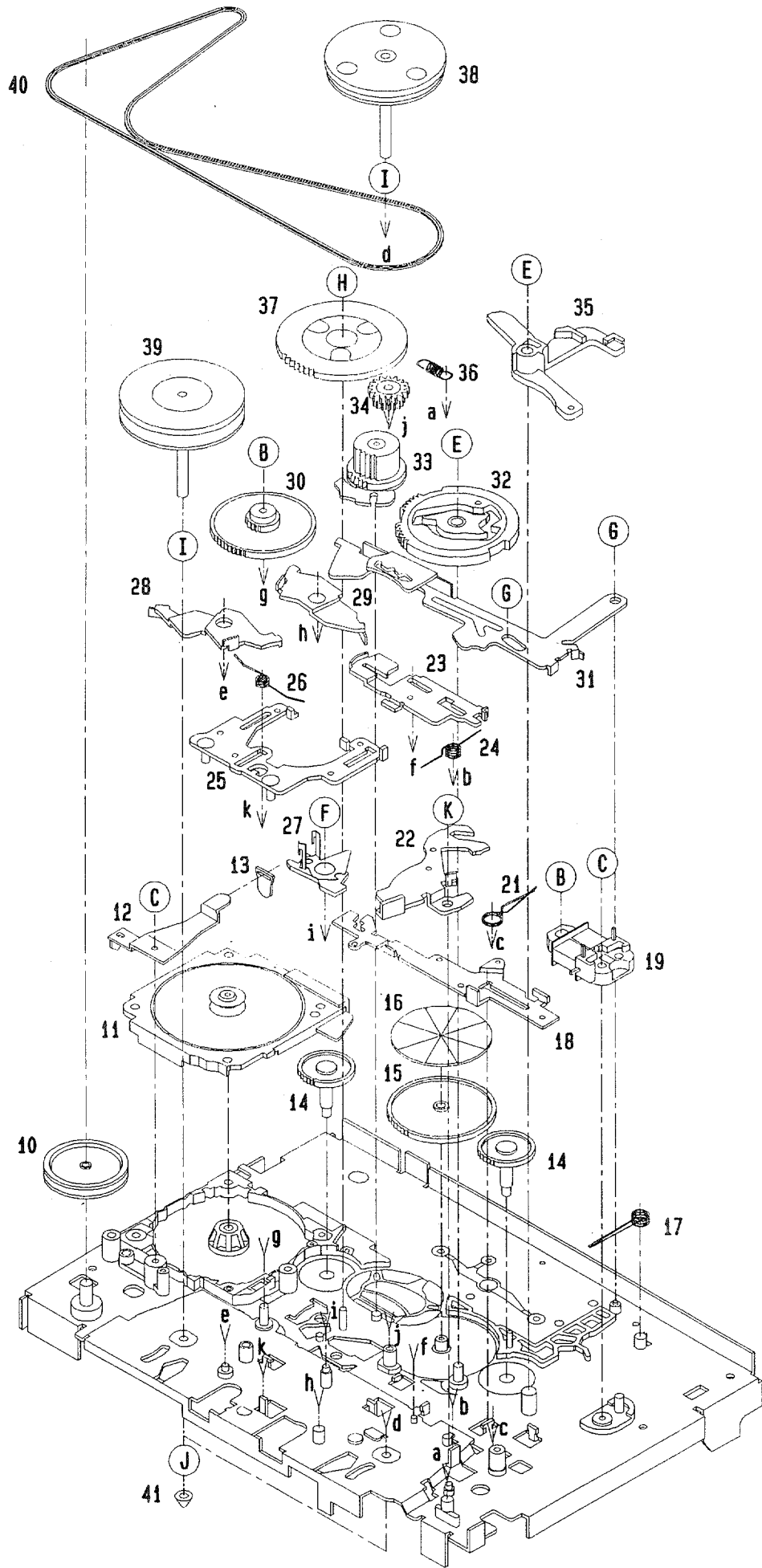


SPRING APPLICATION POSITION



TAPE MECHANISM EXPLODED VIEW 1 / 1



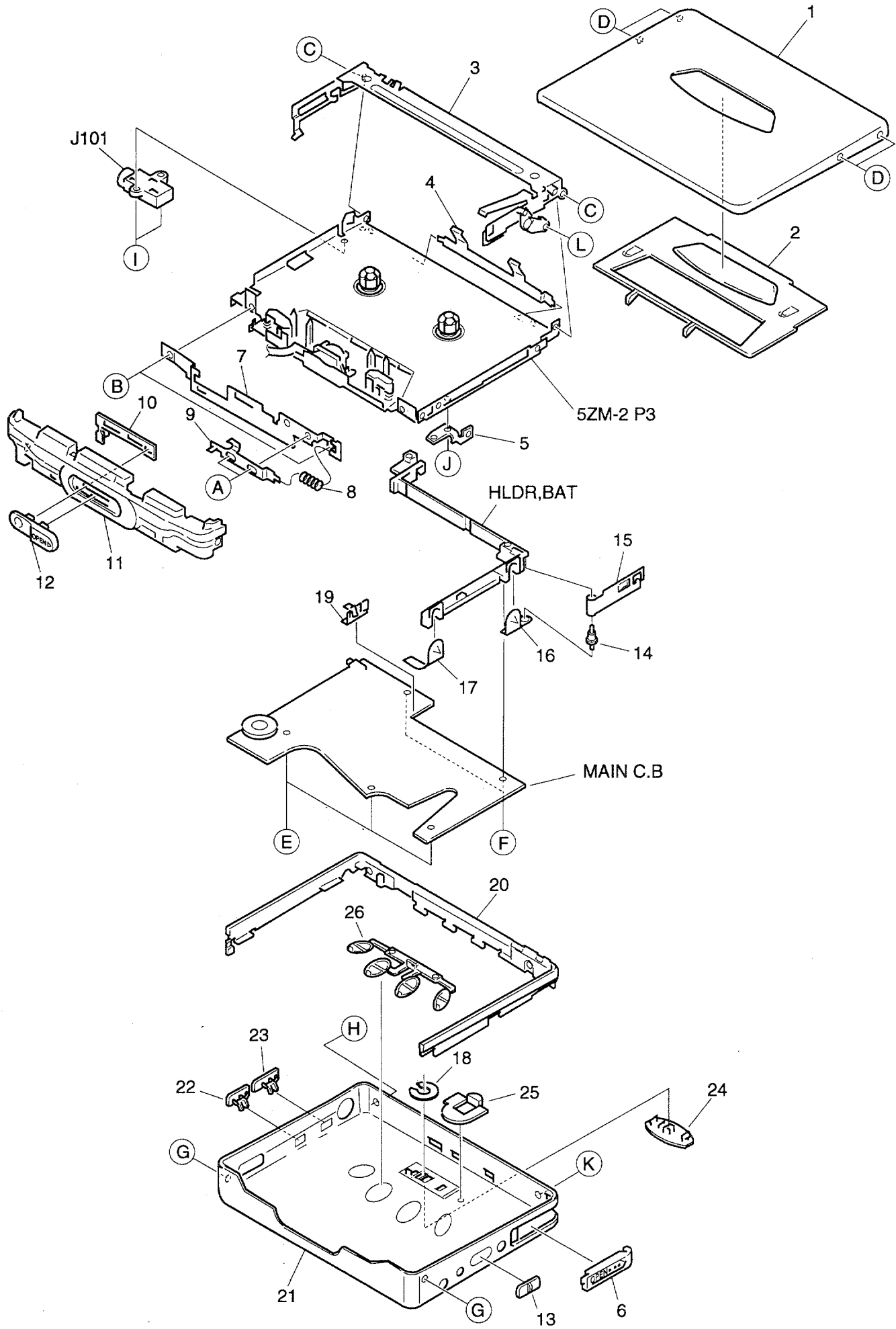


TAPE MECHANISM PARTS LIST 1 / 1

If can't understand for Description please kindly refer to "REFERENCE NAME LIST".

REF. NO.	PART NO.	KANRI NO.	DESCRIPTION	REF. NO.	PART NO.	KANRI NO.	DESCRIPTION
1	85-ZM2-201-110		OUT-SERT ASSY	27	85-ZM2-216-110		LINK HEAD ASSY
2	85-ZM2-265-010		SPR-T PINCH L	28	85-ZM2-213-010		LVR PINCH R
3	85-ZM2-247-110		ARM PINCH ASSY L	29	85-ZM2-212-010		LVR PINCH L
4	85-ZM2-264-010		SPR-T HEAD BACK	30	85-ZM2-222-110		GEAR IDL A
5	85-ZM2-266-010		SPR-T PINCH R	31	85-ZM2-204-010		LVR FR
6	85-ZM2-249-110		ARM PINCH ASSY R	32	85-ZM2-221-010		GEAR CAM
7	85-ZM2-269-010		SPR-C GEAR REEL	33	85-ZM2-205-010		LVR GEAR FR ASSY
8	80-ZM4-231-210		REEL CAP,R	34	85-ZM2-227-010		GEAR CAM C
9	80-ZM4-230-310		REAL CAP,L	35	85-ZM2-207-110		LVR PL
10	85-ZM1-212-010		PULLY PM2	36	85-ZM2-271-010		SPR-E,EJT
11	M8-5ZS-293-000		ABL-52 P3	37	85-ZM2-232-110		GEAR SLIP ASSY
12	85-ZM2-307-010		SPR-P,MOT(S2)	38	85-ZM2-241-010		PLY-WHL ASSY L
13	84-ZM1-383-010		THRUST PLATE(B)	39	85-ZM2-281-010		PLY-WHL ASSY R
14	85-ZM2-228-110		GEAR REEL	40	85-ZM2-237-010		BELT
15	85-ZM2-223-010		GEAR IDL B	41	85-ZM2-260-010		CAP CAPSTAN
16	80-ZM4-277-110		REFL,AUTO	A	85-ZM2-286-010		S-SCREW,V+1.4-7.5
17	85-ZM2-261-010		SPR-T LVR PL	B	87-067-693-010		PW,3-0.8-0.25 SLT
18	85-ZM2-239-110		LVR DIR ASSY	C	87-067-815-110		VT+1.4-3(HL)
19	85-ZM2-603-010		SOL,TDK P3	E	87-067-972-010		PW,1.05-3-0.25 SLT
21	85-ZM2-262-010		SPR-T LVR DIR	F	85-ZM2-312-010		PW1.1-2.5-0.25C
22	85-ZM2-219-110		LINK EJECT	G	87-067-860-010		PW,3-0.95-0.4
23	85-ZM2-214-010		LVR LOCK	H	87-067-569-010		PW,0.83-2.5-0.25 SLT
24	85-ZM2-267-010		SPR-T LVR LOCK	I	87-067-789-010		RW,1.6-3.45-0.25
25	85-ZM2-211-010		LVR HEAD	J	85-ZM2-285-010		PW,13.3-0.25 SLT
26	85-ZM2-263-010		SPR-T PINCH BACK	K	80-ZM4-334-010		PW,1.15-3-0.25 SLT

MECHANICAL EXPLODED VIEW 1 / 1



MECHANICAL PARTS LIST 1 / 1

If can't understand for Description please kindly refer to "REFERENCE NAME LIST".

REF. NO.	PART NO.	KANRI NO.	DESCRIPTION	REF. NO.	PART NO.	KANRI NO.	DESCRIPTION
1	86-HK4-056-010		LID,CASS K ASSY (B)	21	86-HK4-055-010		CABI,REAR K (B)
2	86-HK4-007-110		WINDOW,CASS	22	86-HK4-011-010		KNOB,SL -2
3	86-HK4-202-010		HLDR,CASS ASSY	23	86-HK4-012-010		KNOB,SL -3
4	85-HK3-245-210		P-SP,CASS PUSH	24	86-HK4-013-010		KNOB,SL HOLD
5	85-HK3-230-010		NUT,B-BOX	25	86-HK4-008-010		LENS,LED
6	86-HK4-006-010		LID,BAT (B)	26	86-HK4-050-010		KEY,CONT (B)
7	86-HK4-214-010		BASE,LOCK	A	87-067-288-010		S-SCREW,HINGE+1.4-1 CR BLK
8	82-HK3-206-110		C-SP,LOCK	B	87-261-502-310		V+1.4-1.8
9	86-HK4-213-010		PLATE,LOCK	C	87-078-107-010		S-SCREW,+1.4-0.7 SWCH/CR BLK N
10	86-HK4-215-010		LEVER,STOP	D	87-067-993-010		V+1.4-1.8 BLK N
11	86-HK4-004-110		PANEL,FRONT	E	87-067-732-010		VT2+1.4-3 CR BLK HL
12	86-HK4-049-010		KNOB,SL OPEN (B)	F	87-078-218-010		S-SCREW,SERR1.4-5.3
13	86-HK4-048-010		KNOB,SL BS (B)	G	87-078-139-010		S-SCREW,SERR1.4-2.5 B
14	85-HK3-222-010		SHAFT,BAT	H	86-HK4-223-010		S-SCREW,SERR+1.4-3.5 B L
15	86-HK4-228-010		BAT-CONTACT,P	I	87-067-480-010		S-SCREW,+1.4-3 SWCH/CR BLK
16	85-HK3-228-110		TERM,BAT P	J	87-078-184-010		S-SCREW,SR+1.4-1.8 SWCH/ZN BLK
17	85-HK3-229-010		TERM,BAT M	K	87-078-147-010		S-SCREW,SERR1.4-3 B
18	86-HK4-222-010		STOPPER,KNOB H	L	87-078-207-010		S-SCREW,+1.4-0.6
19	85-HK3-221-010		BAT,CONT M				
20	86-HK4-005-010		FRAME,				

ACCESSORIES / PACKAGE LIST

If can't understand for Description please kindly refer to "REFERENCE NAME LIST".

REF. NO.	PART NO.	KANRI NO.	DESCRIPTION
1	86-HK4-903-010		IB,EX-E
2	87-B30-029-010		HEADPHONE,R55NA
3	87-B30-038-010		BAT,NB-5G
4	87-B30-097-010		CHARGER,RB-107 K
5	85-HK3-070-110		BOX,BAT ASSY BLK
6	82-HK3-951-010		CARRING CASE

REFERENCE NAME LIST

ELECTRICAL SECTION

DESCRIPTION	REFERENCE NAME
ANT	ANTENNAS
C-	CHIP
C-CAP	CAP, CHIP
C-CAP TN	CAP, CHIP TANTALUM
C-COIL	COIL, CHIP
C-DI	DIODE, CHIP
C-DIODE	DIODE, CHIP
C-FET	FET, CHIP
C-FOTR	FILTER, CHIP
C-JACK	JACK, CHIP
C-LED	LED, CHIP
C-RES	RES, CHIP
C-SFR	SFR, CHIP
C-SLIDE SW	SLIDE SWITCH, CHIP
C-SW	SWITCH, CHIP
C-TR	TRANSISTOR, CHIP
C-VR	VOLUME, CHIP
C-ZENER	ZENER, CHIP
CAP, CER	CAP, CERA-SOL
CAP, E	CAP, ELECT
CAP, M/F	CAP, FILM
CAP, TC	CAP, CERA-SOL
CAP, TC-U	CAP, CERA-SOL SS
CAP, TN	CAP, TANTALUM
CERA FIL	FILTER, CERAMIC
CF	FILTER, CERAMIC
DL	DELAY LINE
E/CAP	CAP, ELECT
FILT	FILTER
FLTR	FILTER
FUSE RES	RES, FUSE
MOT	MOTOR
P-DIODE	PHOTO DIODE
P-SNSR	PHOTO SENSER
P-TR	PHOTO TRANSISTOR
POLY VARI	VARIABLE CAPACITOR
PPCAP	CAP, PP
PT	POWER TRANSFORMER
PTR, RES	PTR, MELF
RC	REMOTE CONTROLLER
RES NF	RES, NON-FLAMMABLE
RESO	RESONATOR
SHLD	SHIELD
SOL	SOLENOID
SPKR	SPEAKER
SW, LVR	SWITCH, LEVER
SW, RTRY	SWITCH, ROTARY
SW, SL	SWITCH, SLIDE
TC CAP	CAP, CERA-SOL
THMS	THERMISTOR
TR	TRANSISTOR
TRIMER	CAP, TRIMMER
TUN-CAP	VARIABLE CAPACITOR
VIB, CER	RESONATOR, CERAMIC
VIB, XTAL	RESONATOR, CRYSTAL
VR	VOLUME
ZENER	DIODE, ZENER

MECHANICAL SECTION

DESCRIPTION	REFERENCE NAME
ADHESHIVE	SHEET ADHESHIVE
AZ	AZIMUTH
BAR-ANT	BAR-ANTENNA
BAT	BATTERY
BATT	BATTERY
BRG	BEARING
BTN	BUTTON
CAB	CABINET
CASS	CASSETTE
CHAS	CHASSIS
CLR	COLLAR
CONT	CONTROL
CRSR	CURSOR
CU	CUSHION
CUSH	CUSHION
DIR	DIRECTION
DUBB	DUBBING
FL	FRONT LOADING
FLY-WHL	FLYWHEEL
FR	FRONT
FUN	FUNCTION
G-CU	G-CUSHION
HDL	HANDOL
HIMERON	CLOTH
HINGE, BAT	HINGE, BATTERY
HLDR	HOLDER
HT-SINK	HEAT SINK
IB	INSTRUCTION BOOKLET
IDLE	IDLER
IND, L-R	INDICATOR, L-R
KEY, CONT	KEY, CONTROL
KEY, PRGM	KEY, PROGRAM
KNOB, SL	KNOB, SLIDE
LBL	LABEL
LID, BATT	LID, BATTERY
LID, CASS	LID, CASSETTE
LVR	LEVER
P-SP	P-SPRING
PANEL, CONT	PANEL, CONTROL
PANEL, FR	PANEL, FRONT
PRGM	PROGRAM
PULLY, LOAD MO	PULLY, LOAD MOTOR
RBN	RIBBON
S-	SPECIAL
SEG	SEGMENT
SH	SHEET
SHLD-SH	SHIELD-SHEET
SL	SLIDE
SP	SPRING
SP-SCREW	SPECIAL-SCREW
SPACER, BAT	SPACER, BATTERY
SPR	SPRING
SPR-P	P-SPRING
SPR-PC-PUSH	P-SPRING, C-PUSH
T-SP	T-SPRING
TERM	TERMINAL
TRIG	TRIGGER
TUN	TUNING
VOL	VOLUME
W	WASHER
WHL	WHEEL
WORM-WHL	WORM-WHEEL

サービス技術ニュース	
番号	連絡内容
G-	-
G-	-
G-	-

アイワ株式会社
AIWA CO.,LTD.

9301978, 750038

Tokyo Japan