

Color code-are shown below

- | | | |
|---|-------|------------|
| 1 | | Brown |
| 2 | | Red |
| 3 | | Orange |
| 4 | | Yellow |
| 5 | | Green |
| 6 | | Blue |
| 7 | | Violet |
| 8 | | Grey |
| 9 | | White |
| 0 | | Black |
| D | | Pink |
| C | | Light Blue |

Voltage Measured Values

PIN No. Ref No.	1	2	3	4	5	6	7	8	9	10	11	12	13	14	15	16	17	18	19	20	21
IC101	0.02	-0.03	0	0	-7.75	0	0	0.03	-0.03	0	0	0.01	7.77	-7.65	0	0	0	0			
102	0.03	0	0	-7.75	-0.03	-0.03	-0.03	7.78													
103	-0.05	0.05	0	0	-7.74	0	0	-0.05	0.04	0	0	0.02	7.77	-7.65	0	0	0	0			
104	0.05	0.05	0.05	-7.74	-0.05	-0.05	-0.05	7.77													
IC501	0.19	5.13	5.11	0	0	5.13	0	4.88	0.28	4.97	0.19	4.74	0.43	5.13							
502	0.42	0.01	8.12	5.10	0.51	4.54	2.55	4.54	5.13	4.55	5.13	0	5.10	5.10							
504	—	3.89	3.90	—	0	8.11	0.01	0.01	—												
505	—	0.68	0	—	0	8.84	—	—	—												
506	9.37	0.08	0.06	9.27	9.37	0	0	0	9.37	9.44	0	9.44	0	9.44							
IC701	6.31	6.68	6.65	-9.04	6.65	6.68	6.21	9.43													
IC901	5.88	-0.63	0	0	-5.85	0	0	-0.67	5.88												
902	0.07	0.01	0	-7.74	0.01	0.01	0.07	7.77													
904	0	0	0	-7.74	0	0	0	7.77													
905	0.01	0	0	-9.44	0	0	0.01	9.45													
906	0.03	0	-0.01	-8.25	0	0	0.04	8.26													
907	1.96	0.01	1.97	0.15	0	0	0.12	0	9.46												
909	8.04	0.01	7.5	8.04	8.04	9.08	6.12	-9.43	8.58	7.92	-6.01	-6.01	-9.37	-9.46	7.81	-9.54					

PIN No. Ref No.	1	2	3	4	5	6	7	8	9	10	11	12	13	14	15	16	17	18	19	20	21
IC503	—	0.28	0.19	0.42	2.98	5.13	5.13	5.10	5.10	0.42	0	0.06	7.95	0.25	7.38	—	—	—	—	0	0
702	—	—	-5.22	3.83	-19.80	-19.20	-19.00	-19.00	-11.00	9.43	9.36	9.36	9.36	8.27	8.26	0.13	0.13	9.43	9.43	9.43	—
703	—	0.81	9.4	0	0.04	-19.30	—	—	—	—	—	—	—	9.43	9.43	-12.30	-12.30	-12.30	-12.30	0.03	9.33

PIN No. Ref No.	22	23	24	25	26	27	28	29	30	31	32	33	34	35	36	37	38	39	40	41	42
IC503	9.38	0.06	9.37	0	0	0	0	0	5.10	3.89	3.9	—	5.09	—	0.01	0.02	0.04	7.66	0.76	5.13	—
IC702	-19.20	-5.27	—	—	-18.50	-19.40	-10.00	-10.00	-10.30	19.00	19.20	10.50	10.50	-10.30	-10.50	-1.70	-11.00	-10.30	—		
IC703	9.27	—	0	9.38	-0.13	0	—														

PIN Name Ref No.	E (S)	C (D)	B (G)	PIN Name Ref No.	E (S)	C (D)	B (G)	PIN Name Ref No.	E (S)	C (D)	B (G)
Q101	-0.66	-0.66	-0.22	Q501	0.42	0.76	0	Q901	0	0.01	0.66
102	0	-0.03	-5.98	502	3.00	0.76	0	902	0.18	-9.42	0.01
103	0	0	0.63	503	0	9.36	0	906	0.18	8.03	0.04
104	0	0	0.63	505	10.13	15.00	10.13	907	-9.42	-9.19	-8.64
105	0	0.01	0.63	506	-15.40	-10.70	-15.40	908	9.45	9.43	8.79
106	0.06	0.07	-5.98	507	9.46	13.35	10.13				
107	0	0	0	508	5.81	10.13	6.42				
108	0	0	0	509	-9.44	-13.80	-10.10				
109	0	-0.05	-6.00	510	0	-10.70	-0.62				
110	0	0	0.62	511	8.85	14.20	9.48				
111	0	0	0.63	512	5.13	8.11	5.81				
112	0	0	0.63	513	-10.10	-13.80	-10.70				
113	0	0	-5.98								
114	0	0	-9.37	Q701	-5.29	-5.27	-4.50				
115	0	0	-6.00	702	-11.20	9.43	-11.00				
116	—	—	—	703	-11.00	9.43	-10.60				
117	0	0	0	704	-19.00	-19.10	-18.60				
118	0	0	0.66								
119	0	0	-0.67								

Voltage values are measured by the following meter without input signal at NR SW = OFF, Tape Select = NORMAL in recording mode.
(meter=Electronic Voltmeter)

Wiring Connections (2)

(KD-V6A/B/E type)

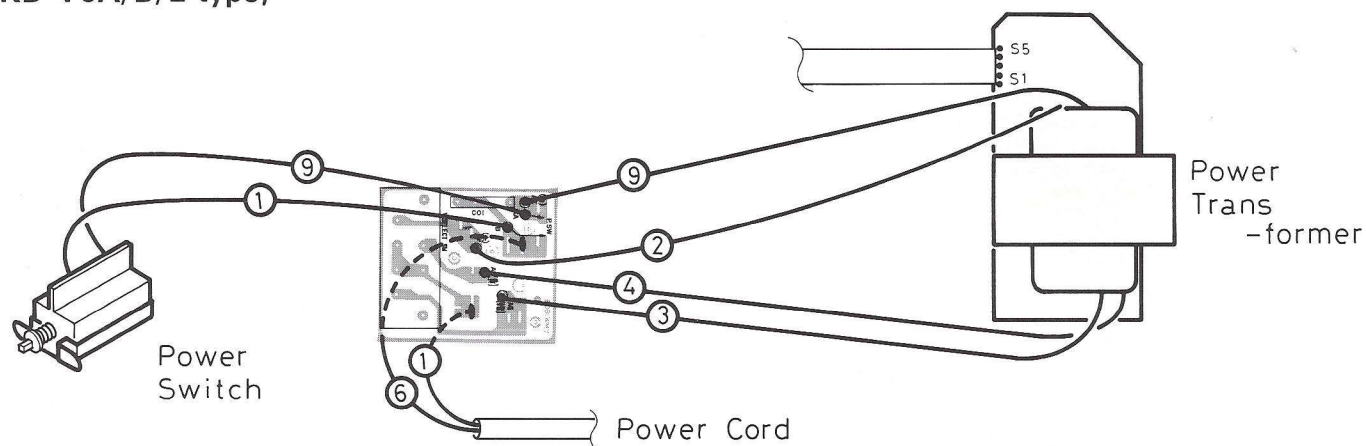


Fig. 15

(KD-V6U type)

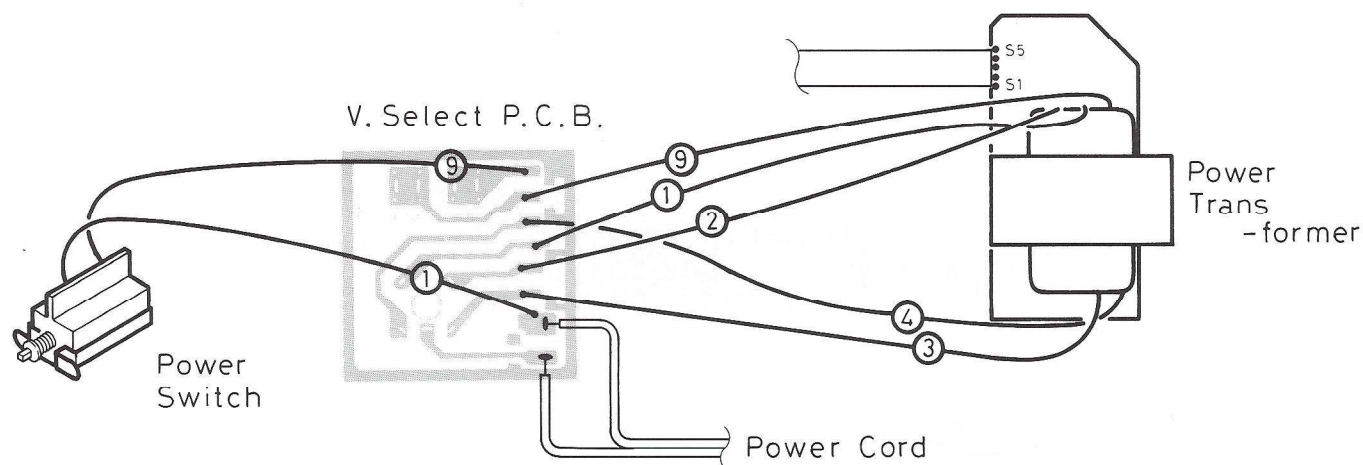
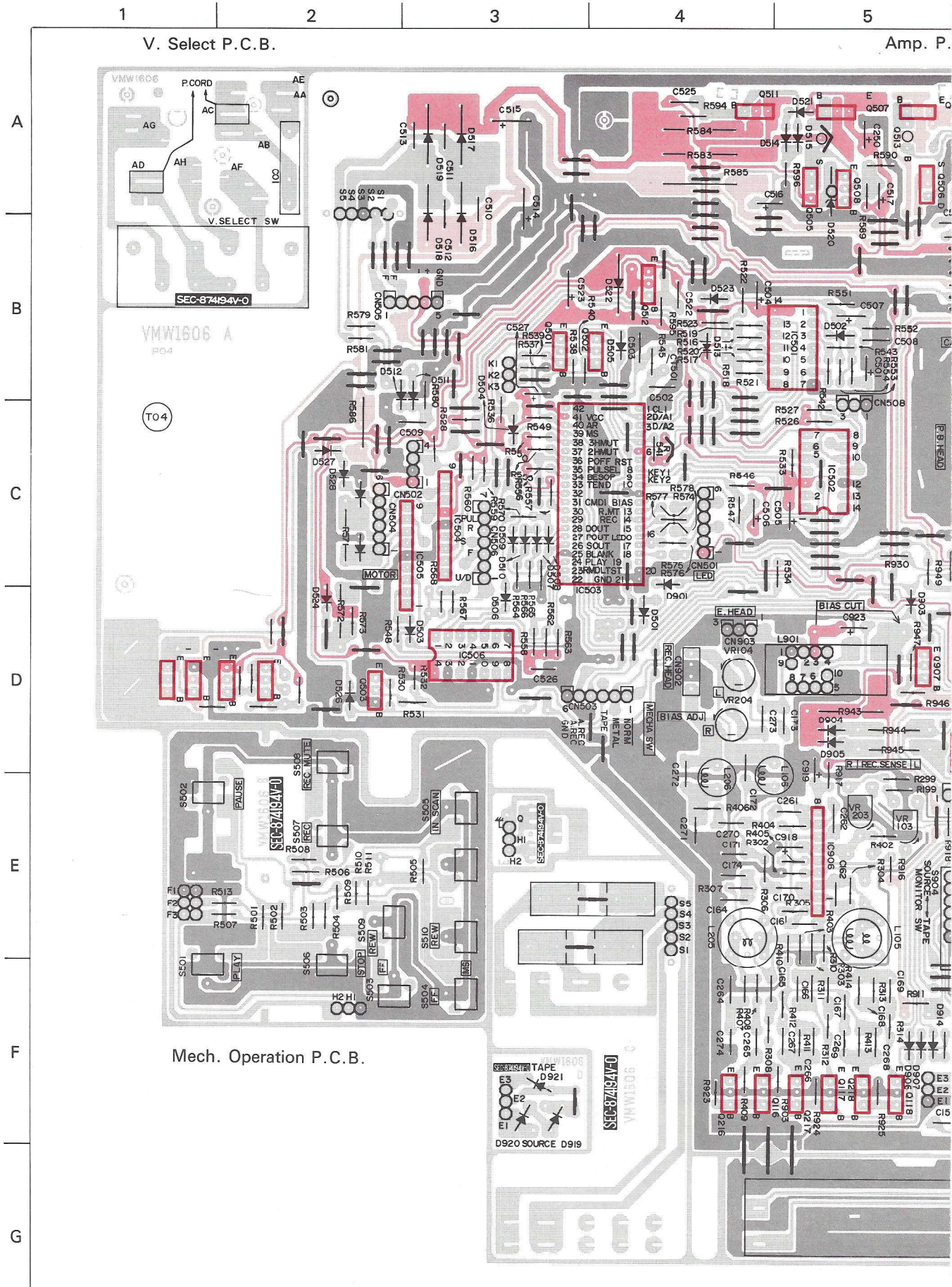


Fig. 16

P.C. Board Parts (Amplifier)



5

6

7

8

9

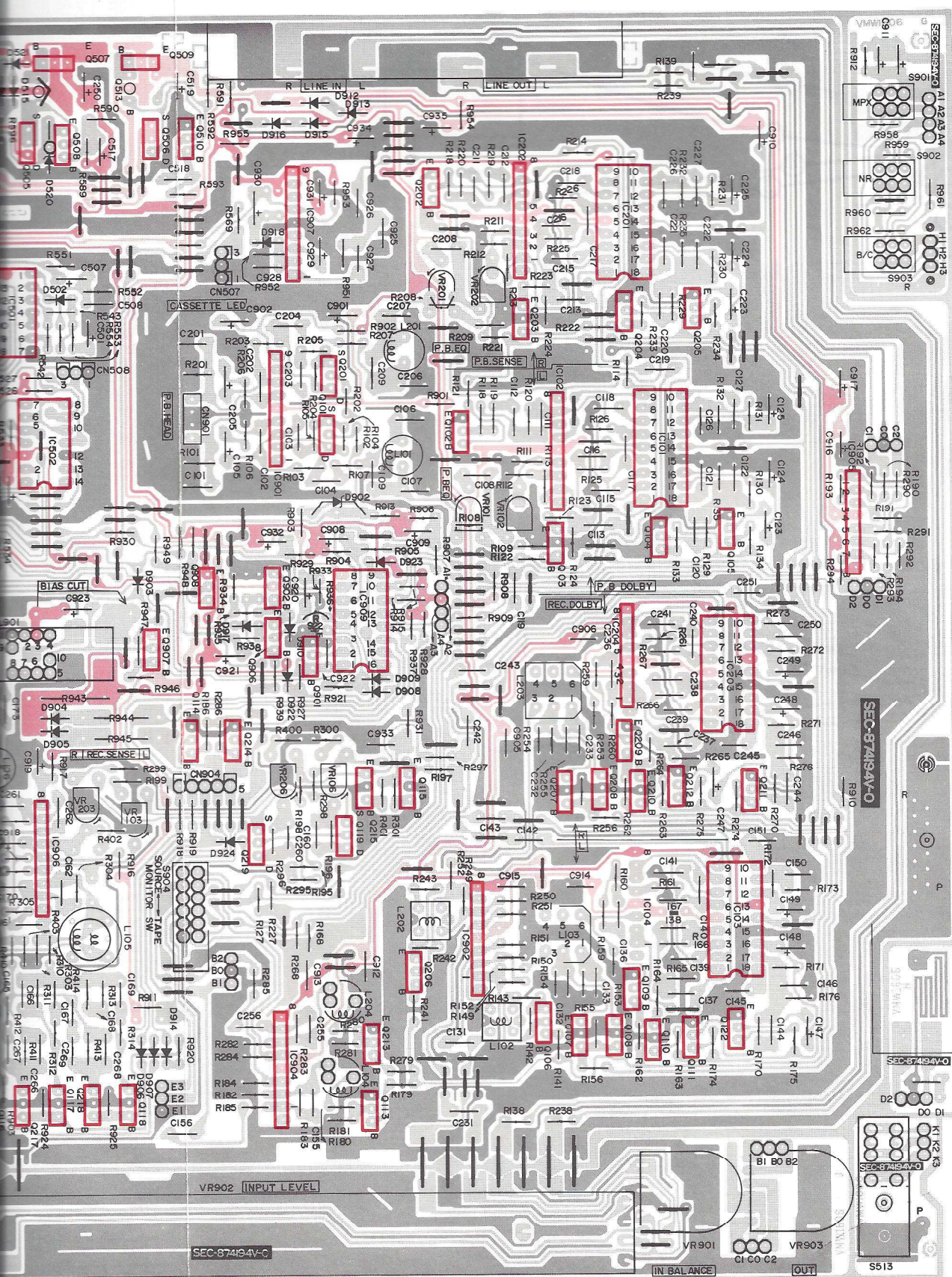
10

Amp. P.C.B.

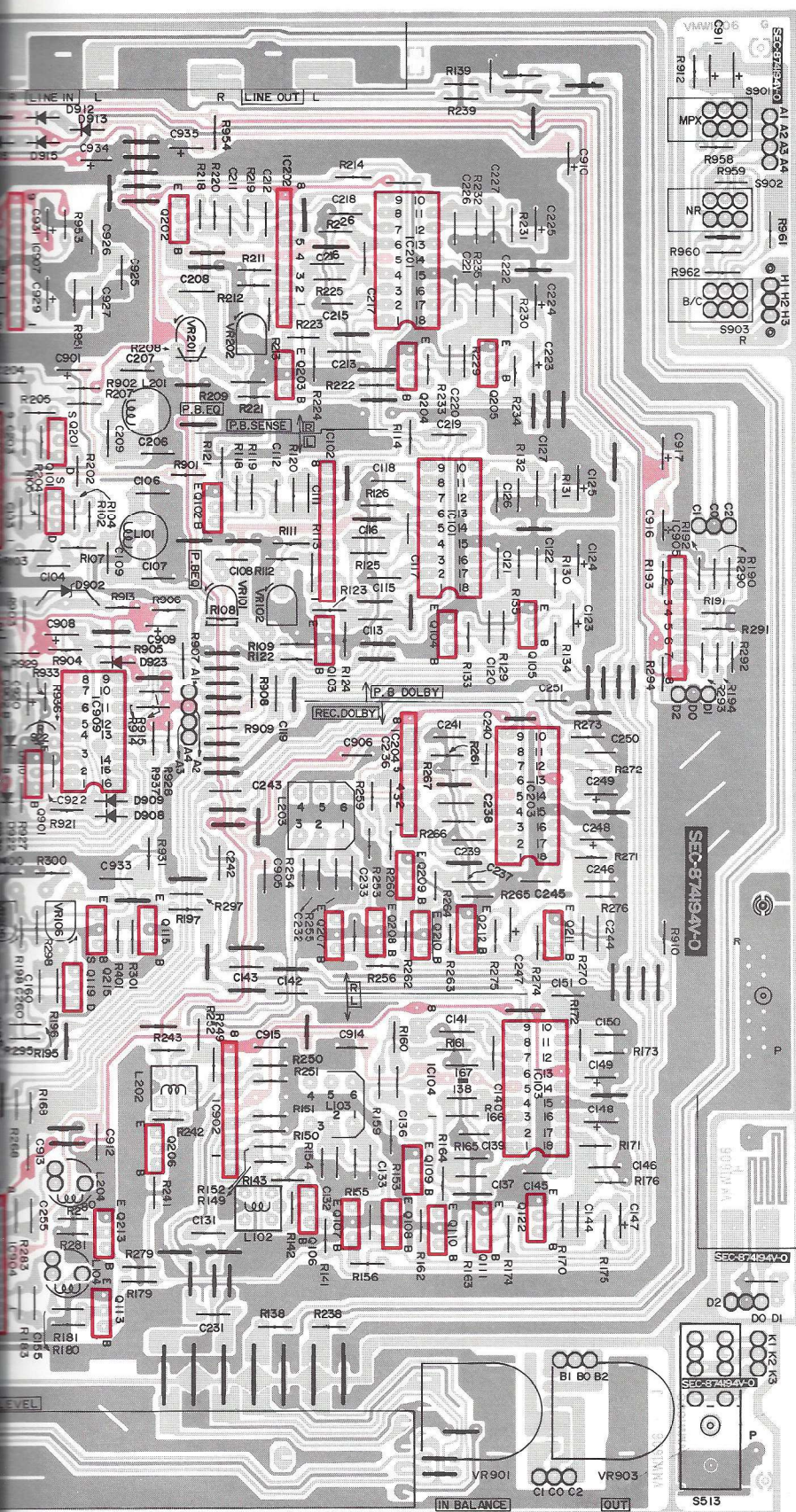
Front

NR. Switch P.C.B.

Phonen Jack P.C.B.






+B
 Earth
 IC and Transi



↓
Front

NR. Switch P.C.B.

Phonen Jack P.C.B.

 +B
 Earth
 IC and Transistor

P.C. Board Parts List

△ parts are safety assurance parts.

When replacing those parts, make sure to use the specified one.

Ref. No.	Parts No.	Parts Name	Remarks	Q'ty
IC504, 505	BA6208A	I.C.		2
IC907	LA2000S	"	M. Scan	1
IC502	LA6339	"		1
IC503	LM6402H-139	"	Mecha. Control	1
IC102, 104 202, 204, 902, 904, 905, 906,	M5218L	"		8
IC901	M5220L	"		1
IC909	M54580P	"		1
IC101, 103, 201, 203	NE652N	"	Dolby NR	4
IC501, 506	TC4069UBP	"		2
△ Q510, 513 902, 908	2SA733A(P,K)	Transistor		4
△ Q509	2SB772(Q,P)	"		1
Q102-113, 117, 118, 202-213, 217, 218, 501-503, 508, 512, 901, 906, 907	2SC945L(P,K)	"		36
Q114, 115, 214, 215	2SD1302(RST)TA	"		4
△ Q507, 511	2SD882(Q,P)	"		2
Q101, 119, 201, 219, 506	2SK246(GR)E2	F.E.T.		5
△ Q505	2SK301(R,S)TA	Transistor		1
D523, 922, 923, 924	MA165	Si. Diode		4
D921	SLR-55MC50F124	L.E.D.		1
D919, 920	SLR-55URC50F124	"		2
D501-515, 521, 524, 901, 903, 904-906, 908-910, 912-918	1SS119	Si. Diode		32
D522	10E1-B	Si. Diode		1
△ D516-519, 526-528	10E2-B	"		4
D902, 520	RD5.6(B3)	Ze. Diode		2
VR901	QVM4A7X-125	V. Resistor		1
VR903	QVN6A7A-014	"		1
VR101-103 106, 201, 202, 203, 206	QVZ1802-223	"		8
VR104, 204	QVZ3501-473	"		2
VR902	QVZ6201-003	"		1
CN505, 904	E04365-005	Connector		2
CN506	" -007	"		1
CN507, 508, 903	QMV5005-003	Plug		3
CN502	" -004	Connector		1
CN501, 503, 504	" -006	Plug		3
CN901, 902	QMV5010-004	Connector		2

Ref. No.	Parts No.	Parts Name	Remarks	Q'ty
S501-510	QSP0301-002	Push Switch		10
S513	QSS2301-102	Slide Switch		1
△ S904	QST5102-V02	Push Switch		1
△ S901-903	QST5341-V03	"		1
L901	VGC0008-001	Block		1
L106, 206	VQP0001-183S	Inductor		2
L105, 205	" -332S	"		2
L101, 201	" -562S	"		2
L104, 204	VQZ0013-001S	Filter		2
L102, 202	" -002S	"		2
L103, 203	VQZ0016-001	"		2
△ R572, 943	QRD129J-	C. Resistor		2
△ R586, 944, 945	QRD149J-	"		3
R101-109, 111-114, 118-127, 129-135, 138, 139,	QRD161J-	"		307
141-143, 149-156, 159-168, 170-176, 179-186,				
190-199, 201-209, 211-214, 218-227, 229-235,				
238, 239, 241-243, 249-256, 259-268, 270-276,				
279-286, 290-307, 310-314, 400-407, 410-414,				
501-511, 513, 516, 517-523, 526-528, 530-534,				
536-553, 555-560, 562-570, 573-581, 589-596,				
901-914, 916, 917, 919-922, 924, 925, 927, 928,				
930, 931, 933-936, 938, 939, 946-949, 951-955,				
958-962				
△ R583, 585	QRX019J-5R6	M.F. Resistor		2
△ R584	" -8R2	"		1

Ref. No.	Parts No.	Parts Name	Remarks	Q'ty
CT501	CSB800A	Lock		1
C504, 505, 508-513, 522, 525, 526, 905, 906, 912, 913-915, 922, 933,	QCF11HP-	C. Capacitor		19
C101, 102, 109, 111, 155, 162, 173, 201, 202, 209, 211, 255, 262, 273, 502, 503, 518	QCS11HJ-	"		17
C172, 272 C115, 118, 139, 141, 156, 170, 215, 218, 239, 241, 256, 270	QCS12HJ- QEN41EM-	E. Capacitor (NP)		2 12
C104, 119, 131, 142, 143, 204, 219, 231, 242, 243	QEN41HM-	"		10
C105, 205, 516, 517, 519, 520, 523, 527, 901, 902,	QET41AR-	E. Capacitor		20
908, 909, 916-919, 921, 931, 934, 935				
C514, 515, 923, 932	QET41ER-	"		4
C123-125, 147-149, 223-225, 247-249, 501, 506, 507, 910, 911, 920, 929, 930	QET41HR-	"		20
C103, 108, 116, 117, 132, 133, 138, 140, 160, 171,	QFN41HJ-	M. Capacitor		22
203, 208, 216, 217, 232, 233, 238, 240, 260, 271, 925, 927				
C106, 107, 112, 113, 120-122, 126, 127, 136, 137,	QFV41HJ-	T.F. Capacitor		46

Ref. No.	Parts No.	Parts Name	Remarks	Q'ty
C144-146, 150, 151, 161, 164, 166-169, 206, 207,	QFV41HJ-	T.F. Capacitor		
212, 213, 220-222, 226, 227, 236, 237, 244-246,				
250, 251, 261, 264, 266-269, 926, 928				
	VMA4194-001	Shield Plate		1
	VMJ3004-102	Jack Ass'y	Line IN/OUT	1
	QMS6302-119	"	H. Phone	1
	QMS3504-002	"	Remote Control	1
	VMH4006-001	Heat Sink		1

⚠ Parts are safety assurance parts.

When replacing those parts, make sure to use the specified one.

⚠	Ref. No.	Parts No.	Parts Name	Remarks	Q'ty
	IC701	M5218L	I.C.		1
	IC702	M58844-603SP	"		1
	IC703	UPD554C-088	"		1
	Q701-703	2SC945L(P,K)	Transistor		3
	Q704	2SK246(GR)	F.E.T.		1
	D351, 352, 451, 452, 702, 703, 705, 706	1SS119	Si. Diode		8
	D701	RD13(B3)	Ze. Diode		1
	VR301, 401	QVZ1802-223	V. Resistor		2
	CN701	VMC0007-003	Connector		1
⚠	S701, 705	QSP0301-002	Push Switch		2
⚠	S702-704	QST5341-V01	"		1
⚠	R714	QRD121J-	C. Resistor		1
	R727	QRD141J-	"		1
	R351-360, 451-460, 701, 702, 705-713, 715-723, 725, 726, 728-735	QRD161J-	"		50
	RN701	VCR0003-001	CR. Block		1
	CT701	CSB400P	Cela. Lock		1
	C710	QCF11HP-	C. Capacitor		1
	C703, 706, 707	QCS11HJ-	"		3
	C701, 705	QET41AR-	E. Capacitor		2
	C702, 708, 709	QET41ER-	"		3
	C351, 352, 451, 452	QET41HR-	"		4

P.C. Board Parts and Parts List

(Display)

Display P.C.B.

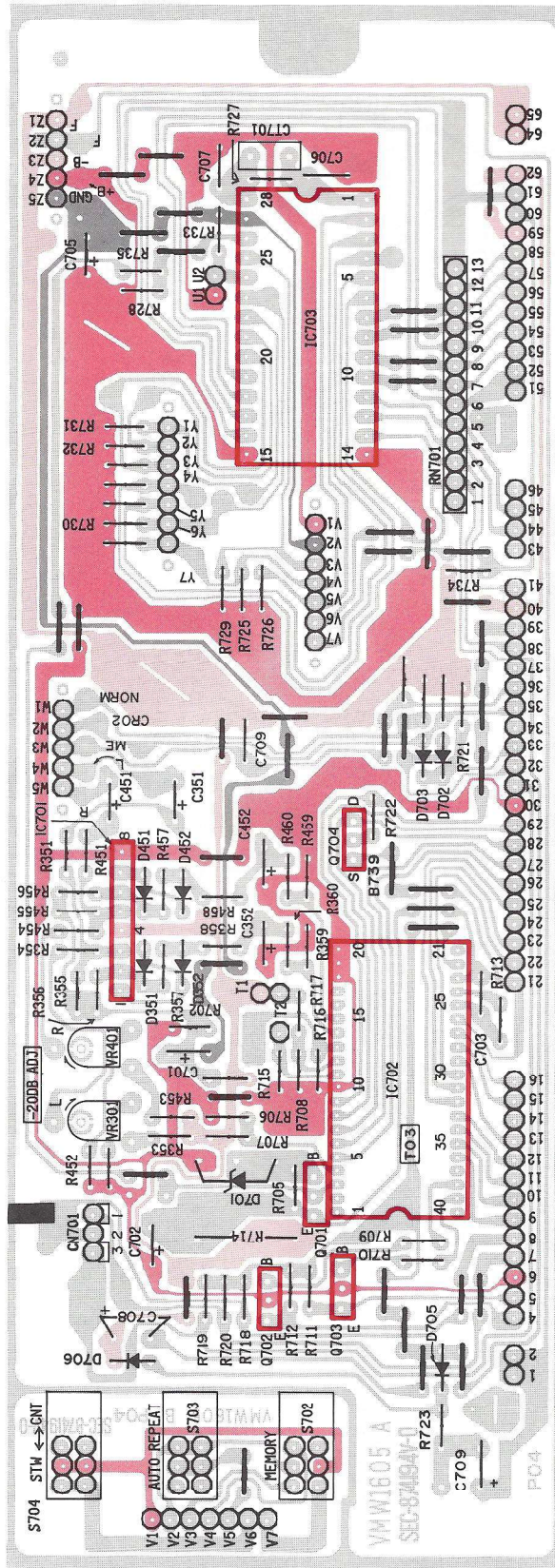


Fig. 18

Earth
+B
IC

Reset Switch P.C.B.

D. Peak Switch P.C.B.

Exploded view of Enclosure assembly

