

# WM-600

## SERVICE MANUAL

*E Model*



### SPECIFICATIONS

Frequency response (DOLBY NR off)  
20-18,000 Hz (with the TAPE selector set to CrO<sub>2</sub>/METAL)  
20-18,000 Hz (with the TAPE selector set to NORM)  
Output  
Earphones (PHONES jack) load impedance 8-300Ω  
Power output  
5 mW + 5 mW at DC operation (EIAJ, 16Ω)  
Power requirements  
1.5 V DC  
Rechargeable battery  
One R6 (size AA) battery  
Battery life (EIAJ)

Battery	Playback hours
Rechargeable NC-6WM fully charged	Approx. 2.5 hours
Sony SUM-3 (NS)	Approx. 1.5 hours
Sony AM3 (N)	Approx. 5 hours
Rechargeable NC-6WM with Sony AM3 (N)	Approx. 7 hours

For maximum performance we recommend the use of alkaline batteries.

#### Dimensions

Approx. 105.2 × 72.8 × 20.8 mm (w/h/d) not incl. projecting parts and controls  
Approx. 106.9 × 73.9 × 25.1 mm (w/h/d)

#### Weight


Approx. 170 g incl. rechargeable battery, not incl. other accessories

#### Accessories supplied

Battery case (1)  
Rechargeable battery (1) Battery charger (1)  
Stereo earphones with remote controller (open-air type, 1)  
Ear adaptors (2) if the earphones do not fit your ears, attach the ear adaptors.  
Carrying case (1)

Design and specifications subject to change without notice.

Model Name Using Similar Mechanism	WM-702
Tape Transport Mechanism Type	MT-WM600-17

Dolby noise reduction manufactured under license from  
Dolby Laboratories Licensing Corporation.  
"DOLBY" and the double-D symbol  are trademarks of  
Dolby Laboratories Licensing Corporation.

CASSETTE PLAYER  
**SONY**®

## SECTION 1

### SERVICING NOTE

This set detects reel rotation by PH701 (photo sensor). Reel rotation cannot be detected when the main board is removed, because PH701 is mounted on the main board. As a result, the auto-off circuit and tape end detection will misoperate. And, up and down of head and power supply of playback circuit cannot operate when the main board is removed, because S704 (head switch) is mounted to the main board (S704 is linked to on and off of the plunger solenoid.)

Therefore, operation check of the mechanism deck and voltage check can be performed by the method shown below.

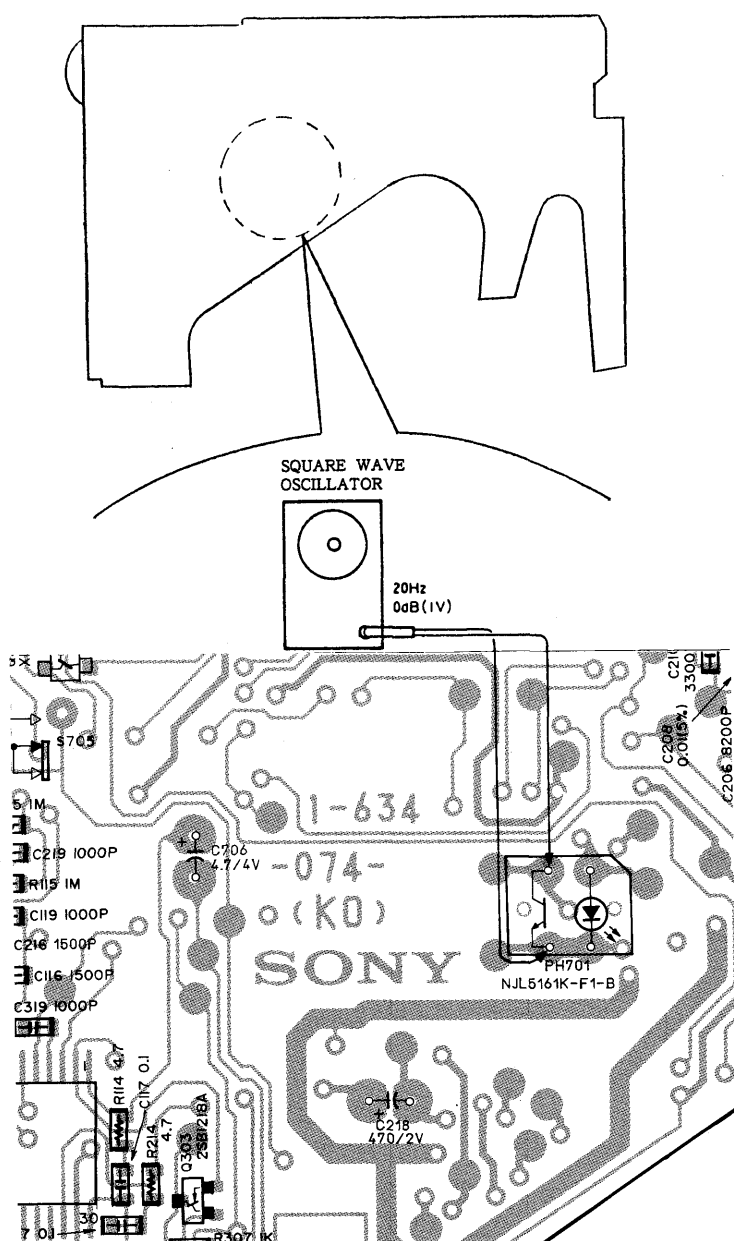
#### FF/REW mode

- 1) Apply the square wave signal to the PH701.
- 2) Press the ◀ or ▶ key.

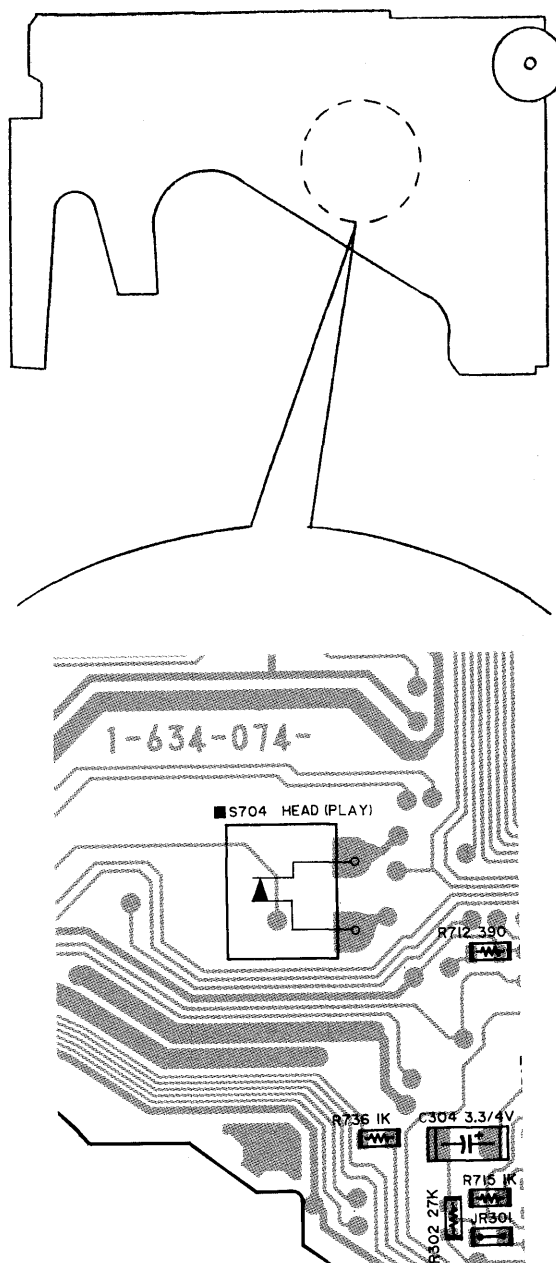
#### PLAY mode

- 1) Apply the square wave signal to the PH701.
- 2) Press the ▶ key.
- 3) Turn on S704 a few seconds later.

— MAIN Board (side A) —

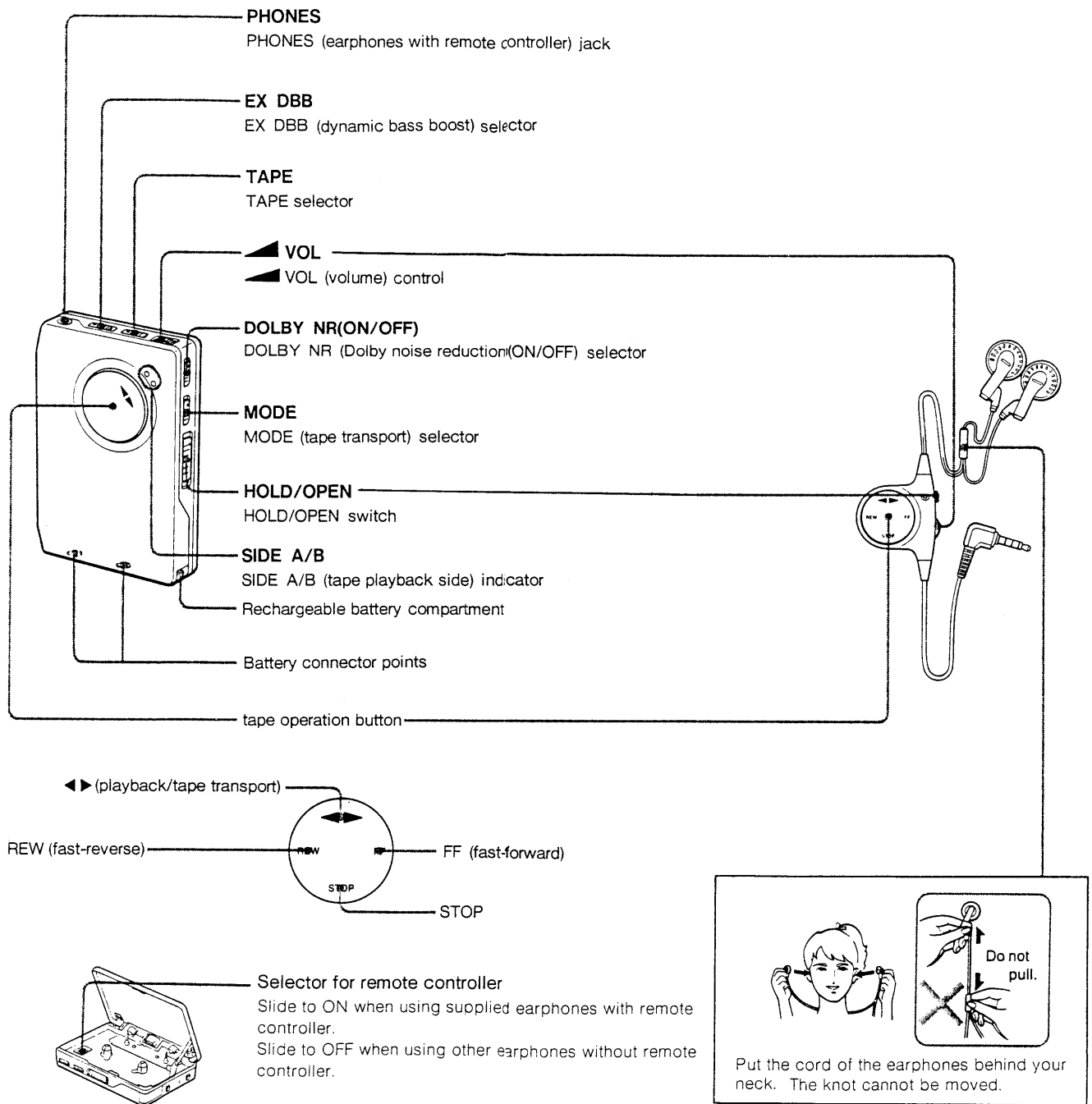


— MAIN Board (side B) —



## SECTION 2 GENERAL

### Location and Function of Controls



## SECTION 3 ADJUSTMENTS

### 3-1. MECHANICAL ADJUSTMENTS

#### PRECAUTION

1. Clean the following parts with a denatured alcohol-moistened swab:
 

playback head	rubber belts
capstan	idlers
pinch roller	
2. Demagnetize the playback head with a head demagnetizer.
3. Do not use a magnetized screwdriver for the adjustments.
4. After the adjustments, apply suitable locking compound to the parts adjusted.
5. The adjustments should be performed with the rated power supply voltage (1.3 V) unless otherwise noted.

#### Torque Measurement

Mode	Torque Meter	Meter Reading
FWD	CQ-102C	22-38 g • cm 0.31-0.53 oz • inch
FWD Back Tension		1.0-3.5 g • cm 0.02-0.04 oz • inch
REV	CQ-102RB	22-38 g • cm 0.31-0.53 oz • inch
REV Back Tension		1.0-3.5 g • cm 0.02-0.04 oz • inch
FF	CQ-201B	more than 60 g • cm more than 0.84 oz • inch
REW		more than 60 g • cm more than 0.84 oz • inch

#### Tape Pulling Force Measurement

Mode	Tension Meter	Meter Reading
FWD	CQ-403A	more than 50 g more than 1.77 oz
REV	CQ-403R	more than 50 g more than 1.77 oz

### 3-2. ELECTRICAL ADJUSTMENTS

#### PRECAUTION

1. Power supply voltage: 1.3 V
2. Switch position
 

DOLBY switch:	OFF
DBB switch:	OFF

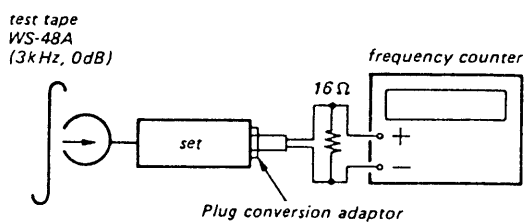
#### Cassette Section

#### TEST TAPE

Type	Signal	Used for
WS-48A	3 kHz, 0 dB	Tape Speed Adjustment

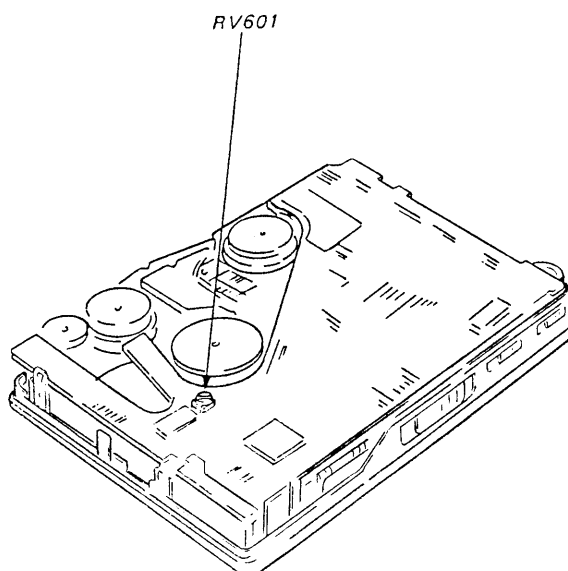
#### Tape Speed Adjustment

Procedure:



1. Playback WS-48A (tape center portion) in FWD mode. Adjust the RV601 so that the frequency counter reads 3,000 Hz  $\pm$  15 Hz.
2. Playback WS-48A (tape center portion) in REV mode. Confirm that the reading of frequency counter is within 2.0% from the reading in step 1.

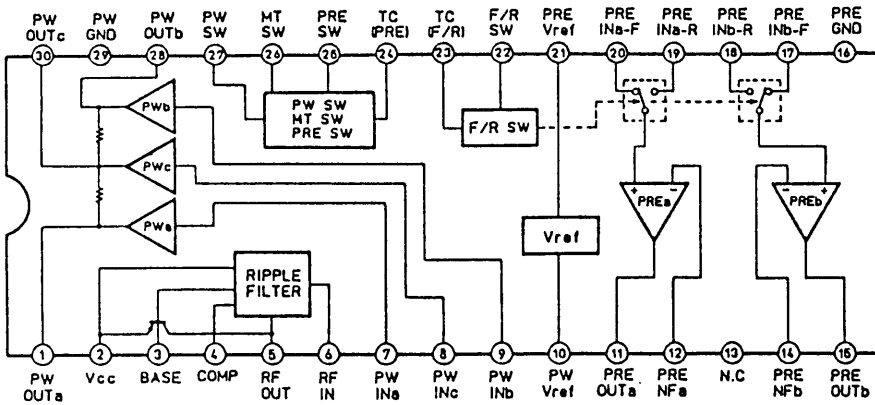
#### Adjustment Parts Location Diagram



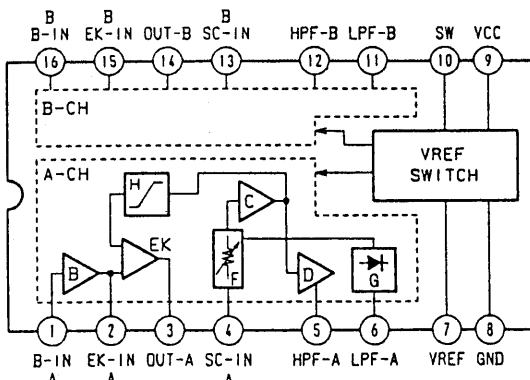
## SECTION 4 DIAGRAMS

### • IC Block Diagrams

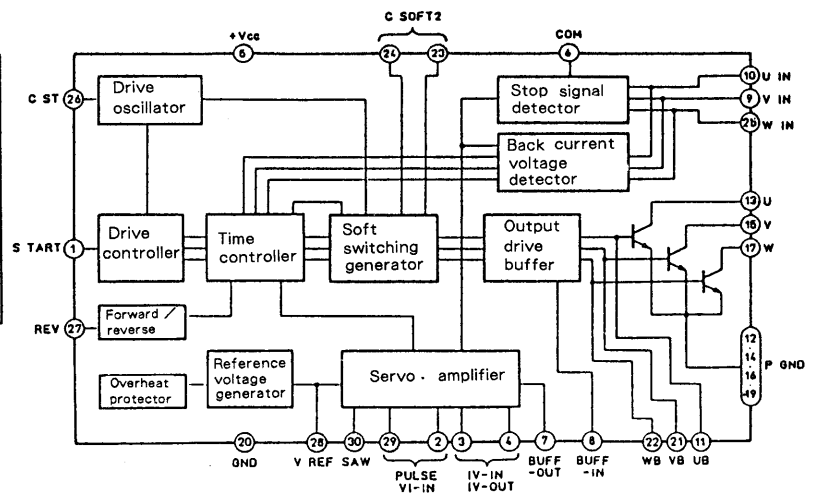
IC301 TA8159FN



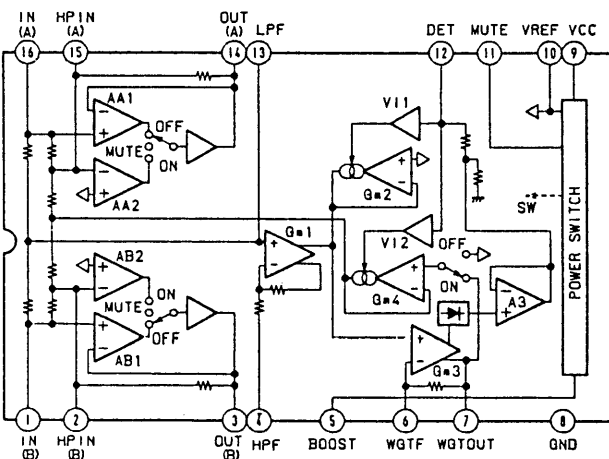
IC302 TA7793FN



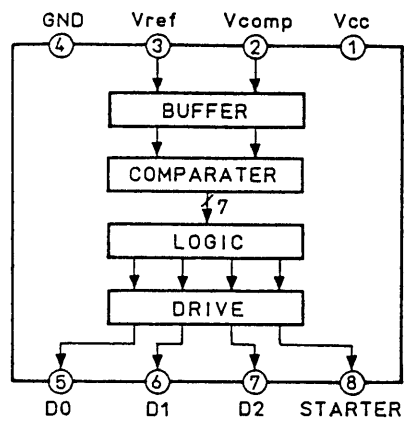
IC601 TLP326ADB



IC303 NJM2106M

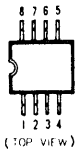


IC701 CXA1405M

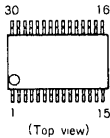


Semiconductor Lead Layouts

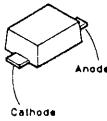
CXA1405M



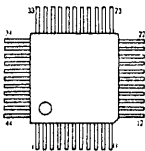
TA8159FN  
TLP326ADB



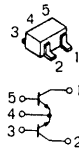
CL-70G-CD



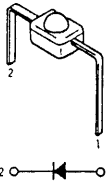
MSM6404A-290GS-K



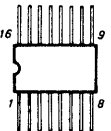
XN1215  
XN1501



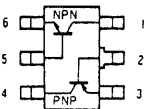
GL-1PR102



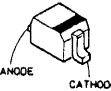
NJM2106M  
TA7793FN

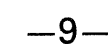
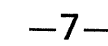


XN4608



MA-110  
MA-729



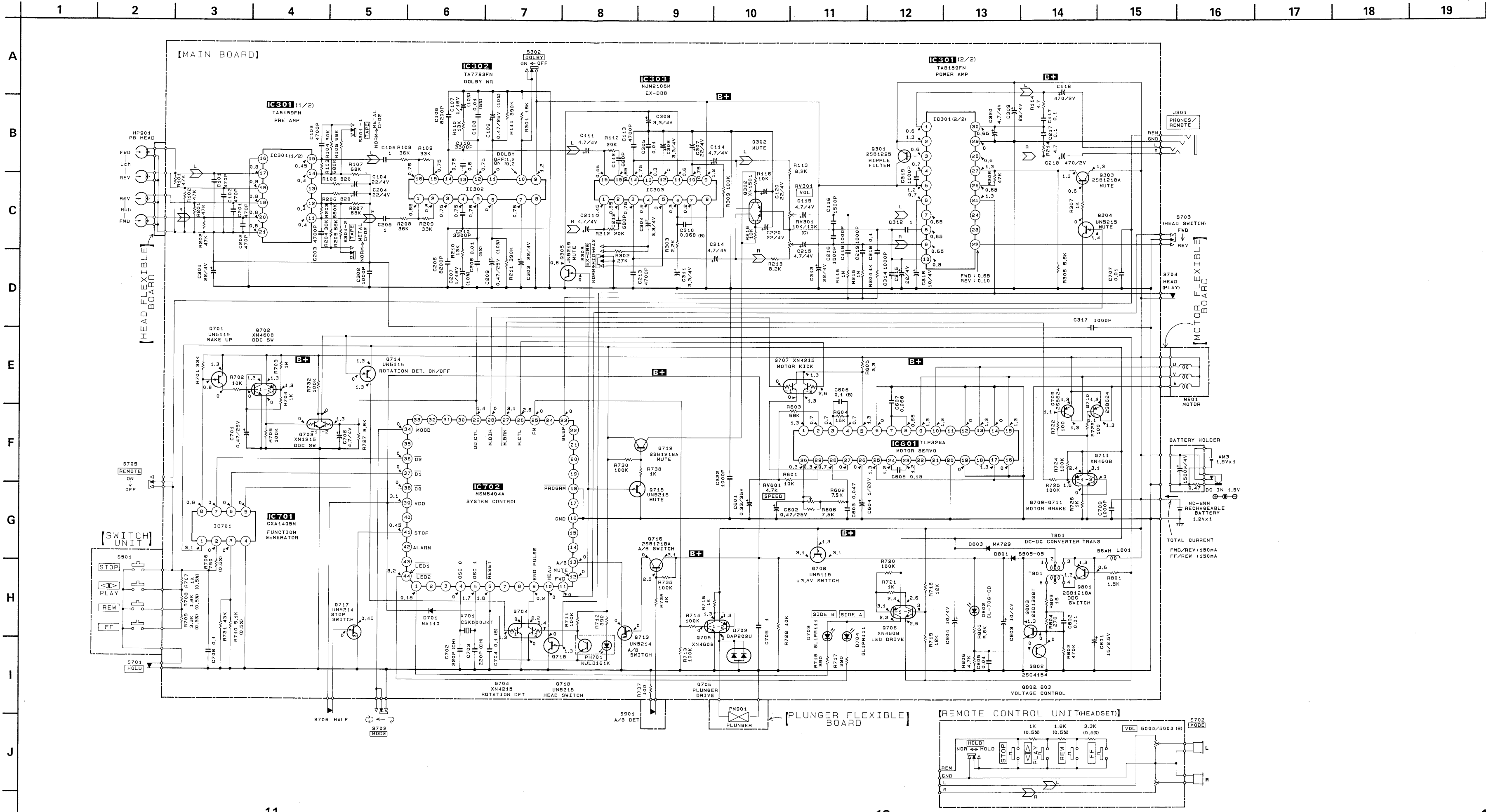


Ref. No.	Location	Ref. No.	Location
D701	C-9	D701	D-21
D702	E-20	D702	E-21
D703	C-2	D703	D-21
D704	B-3	D704	C-10
D801	G-14	D705	E-20
D802	G-14	D706	F-9
D803	F-11	D707	E-9
		D708	C-8
IC301	F-2	D709	D-11
IC302	C-6	D710	D-11
IC303	C-7	D711	D-10
IC601	D-10	D712	F-9
IC701	B-8	D713	B-11
IC702	B-10	D714	F-15
		D715	C-11
PH701	D-5	D716	C-8
		D717	C-9
Q301	E-22	D718	D-8
Q302	C-2	D720	C-11
Q303	F-3	D801	G-13
Q304	F-3	D802	G-11
Q305	D-7	D803	G-11

**Note on Mounting Diagram:**

- : parts mounted on the conductor side.
- : Through hole.
- ▨ : Pattern on the side which is seen.
- ▨ : Pattern of the rear side.

SCHEMATIC DIAGRAM · See pag 5 for IC block diagrams.

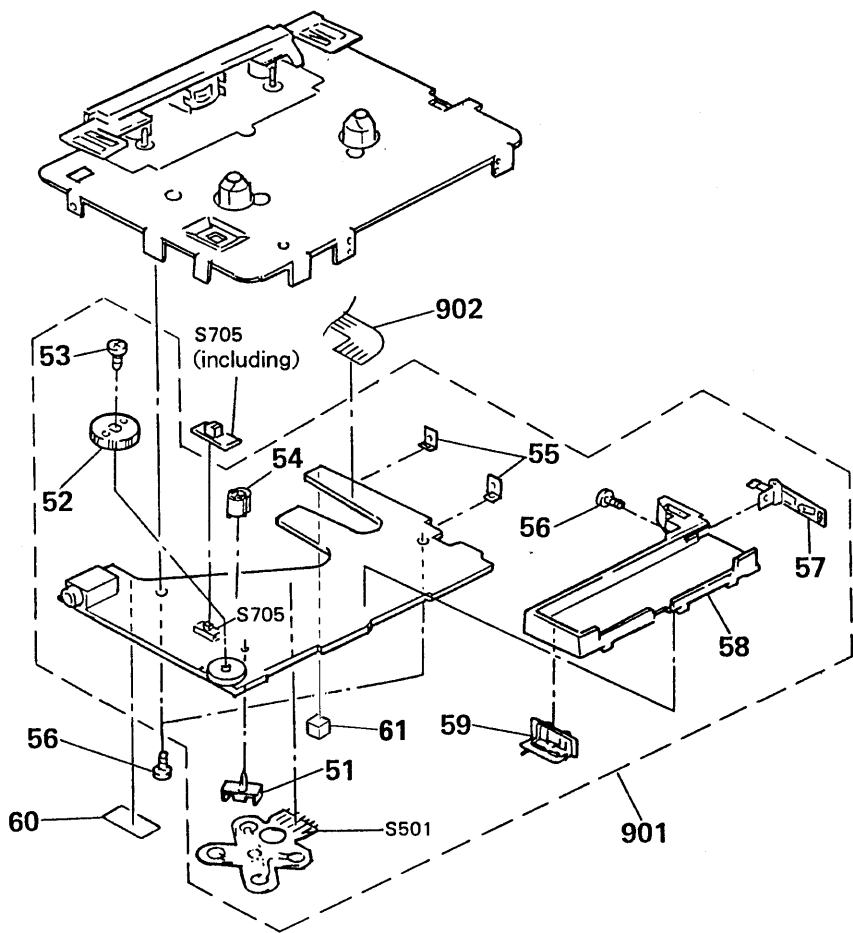


## Note on Schematic Diagram:

- All capacitors are in  $\mu\text{F}$  unless otherwise noted.  $\text{pF}$ :  $\mu\text{F}$  50WV or less are not indicated except for electrolytics and tantalums.
- All resistors are in  $\Omega$  and  $\frac{1}{4}\text{W}$  or less unless otherwise specified.
- **B+** : B+ Line
- : adjustment for repair.
- Total current is measured with no cassette installed.
- Power voltage is dc 1.3 V and fed with regulated dc power supply from battery terminal.
- Voltage and waveforms are dc with respect to ground in playback mode.
- Voltages are taken with a VOM (input impedance 10 M $\Omega$ ). Voltage variations may be noted due to normal production tolerances.
- Signal path.  
 : PB

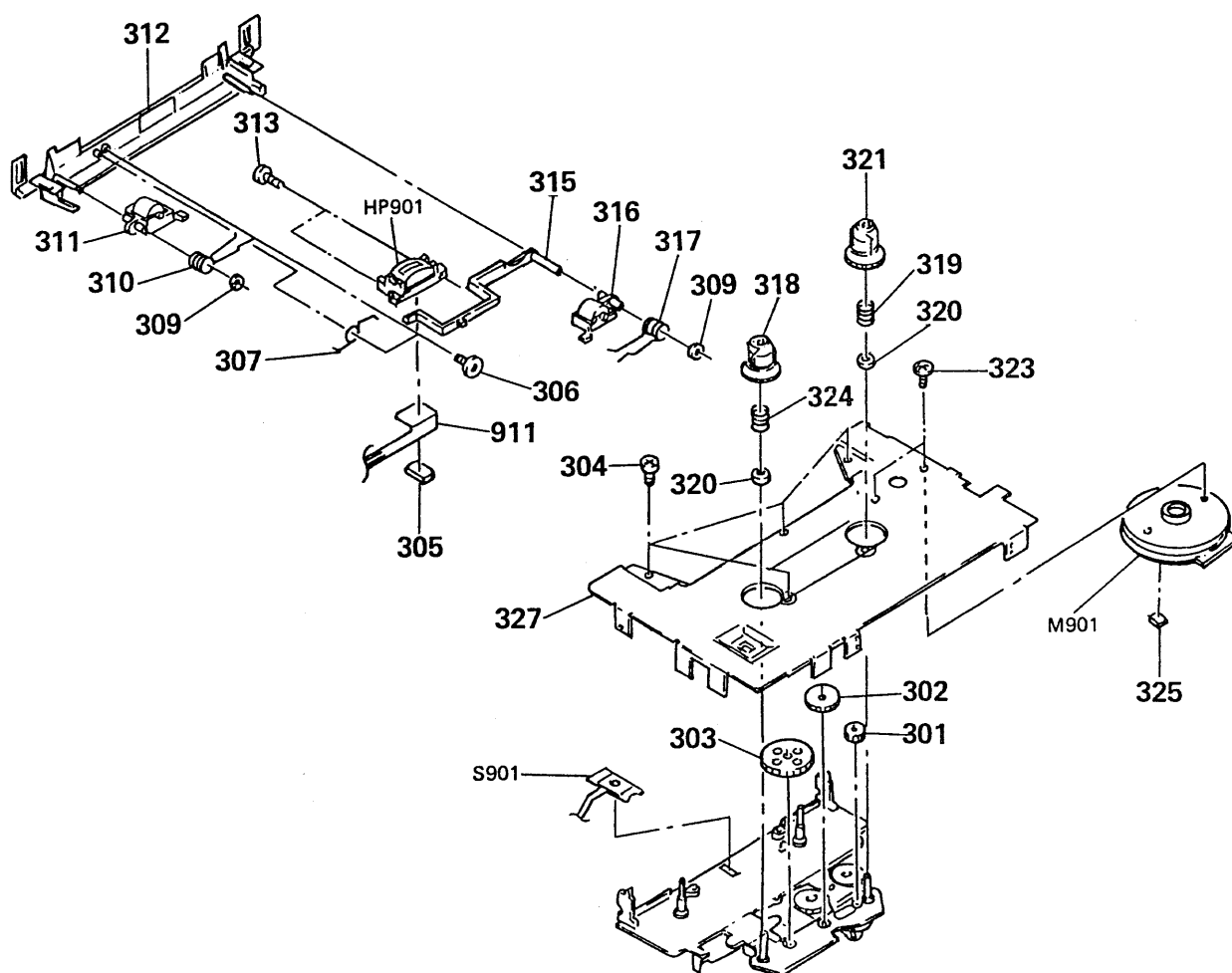


5-2. MAIN BOARD



No.	Part No.	Description	Remarks	No.	Part No.	Description	Remarks
51	3-358-920-01	HOLDER, LED		59	3-358-932-01	TERMINAL BOARD (MINUS)	
52	3-358-934-01	KNOB (VOL)		60	3-831-441-11	CUSHION (B)	
53	3-704-197-11	SCREW (M1.4X2.0), LOCKING		61	3-553-567-00	CUSHION	
54	3-355-429-01	BRACKET (PH)					
55	3-358-919-01	CONTACT		901	A-3015-872-A	PC BOARD ASSY, MAIN	
56	3-335-797-01	SCREW (M1.4X2), TOOTHED LOCK		902	1-634-149-11	PC BOARD, MOTOR FLEXIBLE	
57	X-3342-571-1	TERMINAL BOARD ASSY, BATTERY		S501	1-466-316-11	SWITCH UNIT (PLAY,FF,REW,STOP)	
58	3-358-939-01	HOLDER, BATTERY		S705	1-572-289-11	SWITCH, SLIDE (REMOTE)	

### 5-3. MECHANISM SECTION-1 (MT-WM600-17)



No.	Part No.	Description	Remarks	No.	Part No.	Description	Remarks
301	3-349-852-01	GEAR (C)		317	3-357-711-01	SPRING (PINCH LEVER R), TORSION	
302	3-349-830-01	GEAR (B)		318	3-349-878-01	GEAR (T REEL)	
303	X-3349-808-1	GEAR (A) ASSY		319	3-349-837-01	SPRING, COMPRESSION	
304	3-331-047-03	SCREW (M1.4X1.8), SPECIAL HEAD		320	3-349-827-11	WASHER	
305	*3-338-667-01	SHEET, ADHESIVE, DOUBLE-FACE		321	3-349-877-01	GEAR (S REEL)	
306	3-704-382-31	SCREW (M1.4X2.5), TAPPING		323	3-349-825-01	SCREW	
307	3-357-743-01	SPRING (HEAD LEVER K)		324	3-355-445-01	SPRING, COMPRESSION	
309	3-349-859-11	WASHER		325	9-911-839-XX	SPACER	
310	3-349-864-01	SPRING (PINCH LEVER N), TORSION		327	X-3342-569-1	CHASSIS ASSY, SUB	
311	X-3349-810-1	PINCH LEVER (N) ASSY		911	1-630-958-11	HEAD FLEXIBLE BOARD	
312	X-3342-570-1	HOLDER ASSY (Z)		HP901	1-543-723-11	HEAD (PLAYBACK)	
313	3-704-252-21	SCREW (M1.4X3.8)		M901	1-541-723-11	MOTOR	
315	3-349-801-01	LEVER, HEAD		S901	1-572-355-11	SWITCH, PUSH (A/B DET)	
316	X-3349-804-1	PINCH LEVER (R) ASSY					



## SECTION 6

### ELECTRICAL PARTS LIST

**NOTE:**

Due to standardization, replacements in the parts list may be different from the parts specified in the diagrams or the components used on the set.

- Items marked "★" are not stocked since they are seldom required for routine service. Some delay should be anticipated when ordering these items.

If there are two or more same circuits in a set such as a stereophonic machine, only typical circuit parts may be indicated and capacitors and resistors in other same circuits may be omitted.

**CAPACITORS:**

MF:  $\mu$ F, PF:  $\mu$ MF.

**RESISTORS**

- All resistors are in ohms.
- F: nonflammable

**COILS**

- MMH: mH, UH:  $\mu$ H

**SEMICONDUCTORS**

In each case, U:  $\mu$ , for example:

UA....:  $\mu$ A...., UPA....:  $\mu$ PA....,

UPC....:  $\mu$ PC, UPD....:  $\mu$ PD....

Ref.No.	Part No.	Description	Ref.No.	Part No.	Description
901	A-3015-872-A	PC BOARD ASSY, MAIN	C304	1-135-180-21	TANTAL. CHIP 3.3MF
902	1-634-149-11	PC BOARD, MOTOR FLEXIBLE	C305	1-162-970-11	CERAMIC CHIP 0.01MF
911	1-630-958-11	HEAD FLEXIBLE BOARD	C306	1-135-180-21	TANTAL. CHIP 3.3MF
912	1-631-497-11	PC BOARD, PLUNGER FLEXBLE			
C101	1-162-962-11	CERAMIC CHIP 470PF	10%	50V	
C102	1-162-962-11	CERAMIC CHIP 470PF	10%	50V	
C103	1-162-968-11	CERAMIC CHIP 0.0047MF	10%	50V	
C104	1-135-202-21	TANTAL. CHIP 22MF	20%	4V	
C105	1-164-234-11	CERAMIC CHIP 1MF		10V	
C106	1-164-174-11	CERAMIC CHIP 0.0082MF	10%	25V	
C107	1-135-091-00	TANTAL. CHIP 1MF	10%	16V	
C108	1-162-970-11	CERAMIC CHIP 0.01MF	5%	25V	
C109	1-135-145-11	TANTAL. CHIP 0.47MF	10%	25V	
C110	1-162-967-11	CERAMIC CHIP 0.0033MF	5%	50V	
C111	1-135-151-21	TANTAL. CHIP 4.7MF	20%	4V	
C112	1-162-963-11	CERAMIC CHIP 680PF	10%	50V	
C113	1-162-968-11	CERAMIC CHIP 0.0047MF	10%	50V	
C114	1-135-151-21	TANTAL. CHIP 4.7MF	20%	4V	
C115	1-135-151-21	TANTAL. CHIP 4.7MF	20%	4V	
C116	1-162-965-11	CERAMIC CHIP 0.0015MF	10%	50V	
C117	1-164-156-11	CERAMIC CHIP 0.1MF		25V	
C118	1-126-991-11	ELECT 470MF	20%	2V	
C119	1-162-964-11	CERAMIC CHIP 0.001MF	10%	50V	
C120	1-135-202-21	TANTAL. CHIP 22MF	20%	4V	
C201	1-162-962-11	CERAMIC CHIP 470PF	10%	50V	
C202	1-162-962-11	CERAMIC CHIP 470PF	10%	50V	
C203	1-162-968-11	CERAMIC CHIP 0.0047MF	10%	50V	
C204	1-135-202-21	TANTAL. CHIP 22MF	20%	4V	
C205	1-164-234-11	CERAMIC CHIP 1MF		10V	
C206	1-164-174-11	CERAMIC CHIP 0.0082MF	10%	25V	
C207	1-135-091-00	TANTAL. CHIP 1MF	10%	16V	
C208	1-162-970-11	CERAMIC CHIP 0.01MF	5%	25V	
C209	1-135-145-11	TANTAL. CHIP 0.47MF	10%	25V	
C210	1-162-967-11	CERAMIC CHIP 0.0033MF	5%	50V	
C211	1-135-151-21	TANTAL. CHIP 4.7MF	20%	4V	
C212	1-162-963-11	CERAMIC CHIP 680PF	10%	50V	
C213	1-162-968-11	CERAMIC CHIP 0.0047MF	10%	50V	
C214	1-135-151-21	TANTAL. CHIP 4.7MF	20%	4V	
C215	1-135-151-21	TANTAL. CHIP 4.7MF	20%	4V	
C216	1-162-965-11	CERAMIC CHIP 0.0015MF	10%	50V	
C217	1-164-156-11	CERAMIC CHIP 0.1MF		25V	
C218	1-126-991-11	ELECT 470MF	20%	2V	
C219	1-162-964-11	CERAMIC CHIP 0.001MF	10%	50V	
C220	1-135-202-21	TANTAL. CHIP 22MF	20%	4V	
C301	1-135-202-21	TANTAL. CHIP 22MF	20%	4V	
C302	1-162-964-11	CERAMIC CHIP 0.001MF	10%	50V	
C303	1-135-202-21	TANTAL. CHIP 22MF	20%	4V	
C304	1-135-180-21	TANTAL. CHIP 3.3MF	20%	4V	
C305	1-162-970-11	CERAMIC CHIP 0.01MF	10%	25V	
C306	1-135-180-21	TANTAL. CHIP 3.3MF	20%	4V	
C307	1-135-202-21	TANTAL. CHIP 22MF	20%	4V	
C308	1-135-180-21	TANTAL. CHIP 3.3MF	20%	4V	
C309	1-135-202-21	TANTAL. CHIP 22MF	20%	4V	
C310	1-163-833-00	CERAMIC CHIP 0.068MF	10%	25V	
C311	1-135-180-21	TANTAL. CHIP 3.3MF	20%	4V	
C312	1-164-234-11	CERAMIC CHIP 1MF		10V	
C313	1-135-202-21	TANTAL. CHIP 22MF	20%	4V	
C314	1-162-964-11	CERAMIC CHIP 0.001MF	10%	50V	
C315	1-135-202-21	TANTAL. CHIP 22MF	20%	4V	
C316	1-164-156-11	CERAMIC CHIP 0.1MF		25V	
C317	1-162-964-11	CERAMIC CHIP 0.001MF	10%	50V	
C318	1-135-201-11	TANTAL. CHIP 10MF	20%	4V	
C319	1-162-964-11	CERAMIC CHIP 0.001MF	10%	50V	
C320	1-135-151-21	TANTAL. CHIP 4.7MF	20%	4V	
C322	1-162-964-11	CERAMIC CHIP 0.001MF	10%	50V	
C601	1-135-073-00	TANTAL. CHIP 0.33MF	20%	35V	
C602	1-135-145-11	TANTAL. CHIP 0.47MF	20%	25V	
C603	1-163-809-11	CERAMIC CHIP 0.047MF	10%	25V	
C604	1-135-177-21	TANTAL. CHIP 1MF	20%	20V	
C605	1-164-489-11	CERAMIC CHIP 0.22MF	10%	16V	
C606	1-164-004-11	CERAMIC CHIP 0.1MF	10%	25V	
C607	1-163-833-00	CERAMIC CHIP 0.068MF	10%	25V	
C701	1-135-145-11	TANTAL. CHIP 0.47MF	20%	25V	
C702	1-162-957-11	CERAMIC CHIP 220PF	5%	50V	
C703	1-162-957-11	CERAMIC CHIP 220PF	5%	50V	
C704	1-164-004-11	CERAMIC CHIP 0.1MF	10%	25V	
C705	1-164-234-11	CERAMIC CHIP 1MF		10V	
C706	1-135-151-21	TANTAL. CHIP 4.7MF	20%	4V	
C707	1-162-970-11	CERAMIC CHIP 0.01MF	10%	25V	
C708	1-164-156-11	CERAMIC CHIP 0.1MF		25V	
C709	1-162-964-11	CERAMIC CHIP 0.001MF	10%	50V	
C801	1-135-219-11	TANTAL. CHIP 15MF	20%	2.5V	
C802	1-162-970-11	CERAMIC CHIP 0.01MF	10%	25V	
C803	1-135-201-11	TANTAL. CHIP 10MF	20%	4V	
C804	1-135-201-11	TANTAL. CHIP 10MF	20%	4V	
C805	1-162-970-11	CERAMIC CHIP 0.01MF	10%	25V	
D701	8-719-404-46	DIODE MA110			
D702	8-719-941-09	DIODE DAP202U			
D703	8-719-918-65	DIODE GL1PR102			
D704	8-719-918-65	DIODE GL1PR102			
D801	8-719-938-75	DIODE SB05-05CP			
D802	8-719-975-06	DIODE CL-70G-CD (LED)			
D803	8-719-420-51	DIODE MA729			

Ref.No.	Part No.	Description
HP901	1-543-723-11	HEAD (PLAYBACK)
IC301	8-759-231-86	IC TA8159FN
IC302	8-759-230-88	IC TA7793FN
IC303	8-759-711-24	IC NJM2106M
IC601	8-759-996-13	IC TLP326ADB
IC701	8-752-051-55	IC CXA1405AM-T3
IC702	8-759-500-37	IC MSM6404A-290GS-K
J301	1-569-487-21	JACK 4P (PHONES/REMOTE)
JR301	1-216-864-11	METAL GLAZE 0 5% 1/16W
L801	1-410-213-51	INDUCTOR CHIP 56UH
M901	1-541-723-11	MOTOR
PH701	8-759-710-38	DIODE, PHOTO NJL5161K-F1-B
PM901	1-454-490-11	SOLENOID, PLUNGER
Q301	8-729-807-87	TRANSISTOR 2SB1295-UL6
Q302	8-729-421-23	TRANSISTOR XN1216
Q303	8-729-402-55	TRANSISTOR 2SB1218A-R
Q304	8-729-420-50	TRANSISTOR UN5215
Q305	8-729-420-50	TRANSISTOR UN5215
Q701	8-729-420-53	TRANSISTOR UN5115
Q702	8-729-402-16	TRANSISTOR XN4608
Q703	8-729-403-17	TRANSISTOR XN1215
Q704	8-729-422-54	TRANSISTOR XN4215
Q705	8-729-402-16	TRANSISTOR XN4608
Q706	8-729-402-16	TRANSISTOR XN4608
Q707	8-729-422-54	TRANSISTOR XN4215
Q708	8-729-420-53	TRANSISTOR UN5115
Q709	8-729-162-44	TRANSISTOR 2SB624-BV4
Q710	8-729-162-44	TRANSISTOR 2SB624-BV4
Q711	8-729-402-16	TRANSISTOR XN4608
Q712	8-729-402-55	TRANSISTOR 2SB1218A-R
Q713	8-729-421-26	TRANSISTOR UN5216
Q714	8-729-420-53	TRANSISTOR UN5115
Q715	8-729-420-50	TRANSISTOR UN5215
Q716	8-729-402-55	TRANSISTOR 2SB1218A-R
Q717	8-729-421-26	TRANSISTOR UN5216
Q718	8-729-420-50	TRANSISTOR UN5215
Q801	8-729-402-55	TRANSISTOR 2SB1218A-R
Q802	8-729-602-21	TRANSISTOR 2SC4154
Q803	8-729-400-56	TRANSISTOR 2SD1328-T
R101	1-216-841-11	METAL GLAZE 47K 5% 1/16W
R102	1-216-841-11	METAL GLAZE 47K 5% 1/16W
R103	1-216-855-11	METAL GLAZE 680K 5% 1/16W

Ref.No.	Part No.	Description
R104	1-218-294-11	METAL GLAZE 30K 5% 1/16W
R105	1-216-842-11	METAL GLAZE 56K 5% 1/16W
R106	1-216-820-11	METAL GLAZE 820 5% 1/16W
R107	1-216-843-11	METAL GLAZE 68K 5% 1/16W
R108	1-216-086-00	METAL GLAZE 36K 5% 1/10W
R109	1-216-839-11	METAL GLAZE 33K 5% 1/16W
R110	1-216-994-11	METAL GLAZE 13K 5% 1/16W
R111	1-216-852-11	METAL GLAZE 390K 5% 1/16W
R112	1-218-292-11	METAL GLAZE 20K 5% 1/16W
R113	1-216-832-11	METAL GLAZE 8.2K 5% 1/16W
R114	1-216-793-11	METAL GLAZE 4.7 5% 1/16W
R115	1-216-857-11	METAL GLAZE 1M 5% 1/16W
R116	1-216-833-11	METAL GLAZE 10K 5% 1/16W
R201	1-216-841-11	METAL GLAZE 47K 5% 1/16W
R202	1-216-841-11	METAL GLAZE 47K 5% 1/16W
R203	1-216-855-11	METAL GLAZE 680K 5% 1/16W
R204	1-218-294-11	METAL GLAZE 30K 5% 1/16W
R205	1-216-842-11	METAL GLAZE 56K 5% 1/16W
R206	1-216-820-11	METAL GLAZE 820 5% 1/16W
R207	1-216-843-11	METAL GLAZE 68K 5% 1/16W
R208	1-216-086-00	METAL GLAZE 36K 5% 1/10W
R209	1-216-839-11	METAL GLAZE 33K 5% 1/16W
R210	1-216-994-11	METAL GLAZE 13K 5% 1/16W
R211	1-216-852-11	METAL GLAZE 390K 5% 1/16W
R212	1-218-292-11	METAL GLAZE 20K 5% 1/16W
R213	1-216-832-11	METAL GLAZE 8.2K 5% 1/16W
R214	1-216-793-11	METAL GLAZE 4.7 5% 1/16W
R215	1-216-857-11	METAL GLAZE 1M 5% 1/16W
R216	1-216-833-11	METAL GLAZE 10K 5% 1/16W
R301	1-216-836-11	METAL GLAZE 18K 5% 1/16W
R302	1-216-838-11	METAL GLAZE 27K 5% 1/16W
R303	1-216-825-11	METAL GLAZE 2.2K 5% 1/16W
R304	1-216-821-11	METAL GLAZE 1K 5% 1/16W
R306	1-216-841-11	METAL GLAZE 47K 5% 1/16W
R307	1-216-821-11	METAL GLAZE 1K 5% 1/16W
R308	1-216-830-11	METAL GLAZE 5.6K 5% 1/16W
R309	1-216-845-11	METAL GLAZE 100K 5% 1/16W
R601	1-216-833-11	METAL GLAZE 10K 5% 1/16W
R602	1-218-344-11	METAL GLAZE 7.5K 5% 1/16W
R603	1-216-843-11	METAL GLAZE 68K 5% 1/16W
R604	1-216-835-11	METAL GLAZE 15K 5% 1/16W
R605	1-216-791-11	METAL GLAZE 3.3 5% 1/16W
R606	1-218-344-11	METAL GLAZE 7.5K 5% 1/16W
R701	1-216-839-11	METAL GLAZE 33K 5% 1/16W
R702	1-216-833-11	METAL GLAZE 10K 5% 1/16W

Ref.No.	Part No.	Description
R703	1-216-857-11	METAL GLAZE 1M 5% 1/16W
R704	1-216-821-11	METAL GLAZE 1K 5% 1/16W
R705	1-216-845-11	METAL GLAZE 100K 5% 1/16W
R706	1-216-648-11	METAL CHIP 750 0.50% 1/10W
R707	1-216-651-11	METAL CHIP 1K 0.50% 1/10W
R708	1-216-657-11	METAL CHIP 1.8K 0.50% 1/10W
R709	1-216-663-11	METAL CHIP 3.3K 0.50% 1/10W
R710	1-216-668-11	METAL CHIP 5.1K 0.50% 1/10W
R711	1-216-845-11	METAL GLAZE 100K 5% 1/16W
R712	1-216-816-11	METAL GLAZE 390 5% 1/16W
R713	1-216-845-11	METAL GLAZE 100K 5% 1/16W
R714	1-216-845-11	METAL GLAZE 100K 5% 1/16W
R715	1-216-821-11	METAL GLAZE 1K 5% 1/16W
R716	1-216-816-11	METAL GLAZE 390 5% 1/16W
R717	1-216-816-11	METAL GLAZE 390 5% 1/16W
R718	1-216-834-11	METAL GLAZE 12K 5% 1/16W
R719	1-216-834-11	METAL GLAZE 12K 5% 1/16W
R720	1-216-845-11	METAL GLAZE 100K 5% 1/16W
R721	1-216-821-11	METAL GLAZE 1K 5% 1/16W
R722	1-216-809-11	METAL GLAZE 100 5% 1/16W
R723	1-216-809-11	METAL GLAZE 100 5% 1/16W
R724	1-216-845-11	METAL GLAZE 100K 5% 1/16W
R725	1-216-845-11	METAL GLAZE 100K 5% 1/16W
R726	1-216-821-11	METAL GLAZE 1K 5% 1/16W
R727	1-216-831-11	METAL GLAZE 6.8K 5% 1/16W
R728	1-216-833-11	METAL GLAZE 10K 5% 1/16W
R730	1-216-845-11	METAL GLAZE 100K 5% 1/16W
R731	1-216-690-11	METAL CHIP 43K 0.5% 1/10W
R732	1-216-845-11	METAL GLAZE 100K 5% 1/16W
R735	1-216-845-11	METAL GLAZE 100K 5% 1/16W
R736	1-216-821-11	METAL GLAZE 1K 5% 1/16W
R737	1-216-809-11	METAL GLAZE 100 5% 1/16W
R738	1-216-821-11	METAL GLAZE 1K 5% 1/16W
R801	1-216-823-11	METAL GLAZE 1.5K 5% 1/16W
R802	1-216-853-11	METAL GLAZE 470K 5% 1/16W
R803	1-216-800-11	METAL GLAZE 18 5% 1/16W
R804	1-216-814-11	METAL GLAZE 270 5% 1/16W
R805	1-216-830-11	METAL GLAZE 5.6K 5% 1/16W
R806	1-216-829-11	METAL GLAZE 4.7K 5% 1/16W
RV301	1-230-485-11	RES, VAR, CARBON 10K/10K (VOL)
RV601	1-238-675-21	RES, ADJ, METAL GLAZE 4.7K (SPEED)

Ref.No.	Part No.	Description
S301	1-571-277-31	SWITCH, SLIDE (TAPE)
S302	1-571-275-31	SWITCH, SLIDE (DOLBY)
S303	1-571-506-41	SWITCH, SLIDE (EX-DBB)
S501	1-466-316-11	SWITCH UNIT (PLAY,FF,REW,STOP)
S701	1-572-288-11	SWITCH, PUSH (HOLD)
S702	1-571-275-31	SWITCH, SLIDE (MODE)
S703	1-571-584-31	SWITCH, SLIDE (FWD/REV)
S704	1-572-288-11	SWITCH, PUSH (HEAD)
S705	1-572-289-11	SWITCH, SLIDE (REMOTE)
S706	1-572-287-11	SWITCH, PUSH (HALF)
S901	1-572-355-11	SWITCH, PUSH (A/B DET)
T801	1-449-543-11	TRANSFORMER, DC-DC CONVERTER
X701	1-577-700-11	VIBRATOR, CERAMIC (500kHz)

## ACCESSORY &amp; PACKING MATERIAL

1-526-565-00	AC PLUG ADAPTOR
1-528-231-11	BATTERY,NICKEL CADMIUM (NC-6WM)
1-528-328-11	CHARGER, BATTERY (BC-7AT)
1-528-314-21	CASE, BATTERY
*3-352-084-01	HOLDER
*3-353-196-01	CUSHION (UPPER)
*3-353-197-01	CUSHION (LOWER)
*3-353-199-01	INDIVIDUAL CARTON
3-751-779-11	MANUAL, INSTRUCTION
8-953-322-90	HEADPHONE MDR-E472RV5 SET
X-3329-657-1	ATTACHMENT ASSY