

WM-190

SERVICE MANUAL

E Model



Model Name Using Similar Mechanism	WM-170
Tape Transport Mechanism Type	MT-WM190-45

SPECIFICATIONS

Frequency response (DOLBY* NR OFF)
20 – 18,000 Hz (with the TAPE selector set to NORM or METAL/CrO₂ (EIAJ**))

Output
Earphones (stereo minijack) load impedance 8 – 300Ω

Power output
4 mW + 4 mW at DC operation (EIAJ, 16Ω)

Power requirements
1.5 V DC
Rechargeable battery
One R6 (size AA) battery
DC IN 1.5 V jack accepts (Using battery case):
Sony AC-D1L AC power adaptor (optional)
available in Japan for use on 100 V AC 50/60 Hz
available in other countries for use on 120 V AC,
60 Hz or 220 V AC, 50 Hz
Sony EBP-500B battery case (optional) for use with
two R20 (size D) batteries
Sony DCC-70 car battery cord (optional) for use with
12 V car battery

Battery life (EIAJ) (DOLBY NR OFF)

Battery	Tape playback
Rechargeable NC-6WM (fully charged)	Approx. 3.5 hours
Sony alkaline battery AM3 (N)	Approx. 7 hours
Sony battery SUM-3 (NS)	Approx. 2 hours
Rechargeable NC-6WM + Sony AM3 (N)	Approx. 10 hours

For maximum performance we recommend the use of alkaline batteries.

Dimensions

Approx. 107.5 × 71.9 × 21.9 mm (w/h/d)
not incl. projecting parts and controls
Approx. 109 × 74.4 × 23.9 mm (w/h/d)
incl. projecting parts and controls (EIAJ)

Weight

Approx. 205 g


Accessories supplied

incl. rechargeable battery, not incl. other accessories
Battery case (1) Sony alkaline battery AM3 (N) (1)
Carrying case (1) Battery charger (1)
Rechargeable battery (1)
Stereo earphones (open-air type, 1)
AC plug adaptor (1)

Note on stereo earphones

Put the cord behind your neck.
The knot cannot be moved.

Design and specifications subject to change without notice.

- Dolby noise reduction manufactured under License from Dolby Laboratories Licensing Corporation.
"DOLBY" and the double-D symbol  are trademarks of Dolby Laboratories Licensing Corporation.

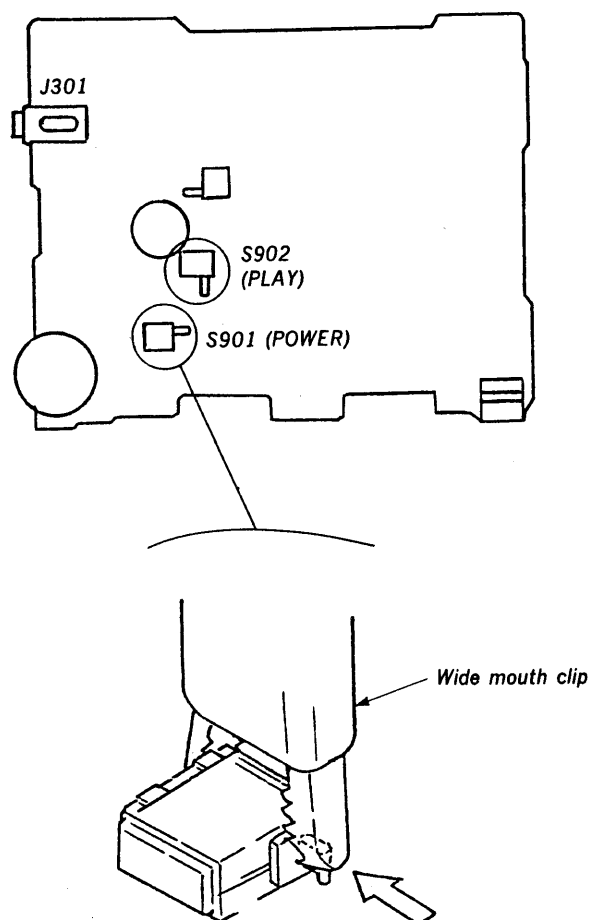
** (EIAJ) Electric Industries Association of Japan

CASSETTE PLAYER SONY®

SERVICING NOTES

When you are movement check states of removed the audio board, press the PLAY (▶) button, slide on the S901 (POWER) and S902 (PLAY) switches.

AUDIO BOARD —Component side—



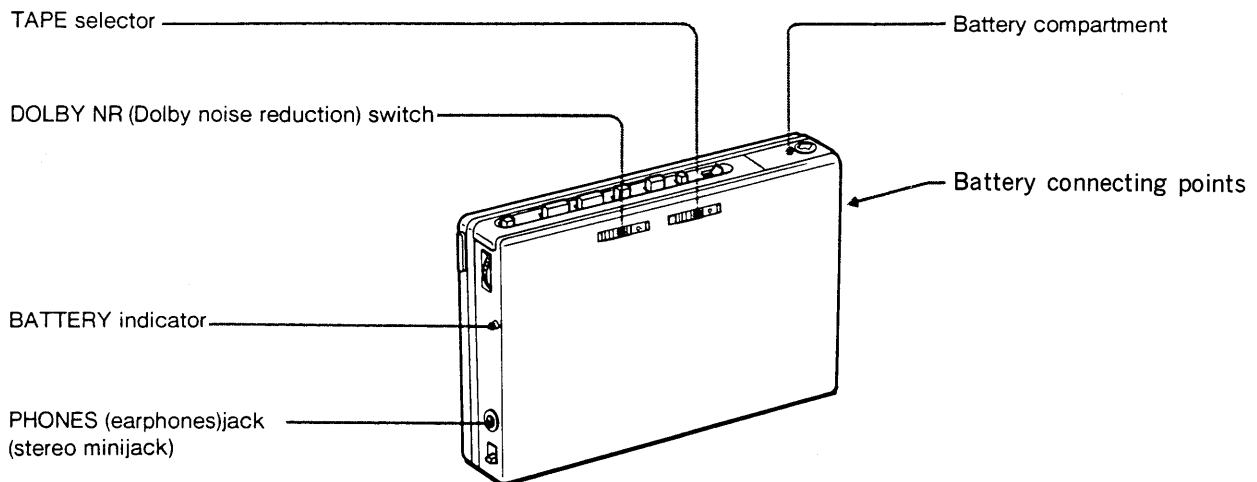
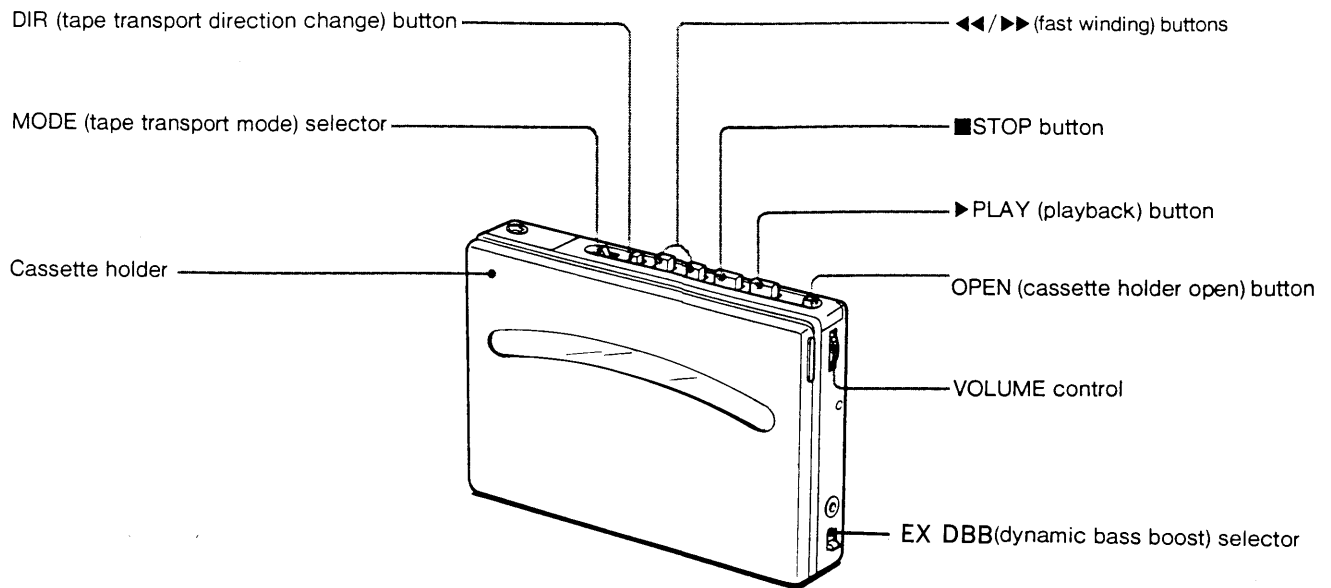
Flexible Circuit Board Repairing

- Keep the temperature of the soldering iron around 270°C during repairing.
- Do not touch the soldering iron on the same conductor of the circuit board (Within 3 times).
- Be careful not to apply force on the conductor when soldering or unsoldering.

Notes on chip component replacement

- Never reuse a disconnected chip component.
- Notice that the minus side of a tantalum capacitor may be damaged by heat.

SECTION 1 GENERAL



SECTION 2
ADJUSTMENTS

2-1. MECHANICAL MEASUREMENTS

PRECAUTION

- 1. Clean the following parts with a denatured-alcohol-moistened swab:

playback head

pinch roller

capstan

rubber belts
- 2. Demagnetize the playback head with a head demagnetizer.
- 3. Do not use a magnetized screwdriver for the adjustments.
- 4. After the adjustments, apply suitable locking compound to the parts adjusted.
- 5. The adjustments should be performed with the reted power supply voltage (1.3V) unless otherwise noted.

Torque Measurement

Mode	Torque meter	Meter reading
FWD	CQ-102C	20-38g•cm (0.27-0.52oz•inch)
FWD Back Tension		0.5-4g•cm (0.007-0.05oz•inch)
REV	CQ-102RB	20-38g•cm (0.27-0.52oz•inch)
REV Back Tension		0.5-3.5g•cm (0.007-0.05oz•inch)
FF, REW	CQ-201B	more than 60 g•cm (more than 0.83 oz•inch)

Tape Tension Measurement

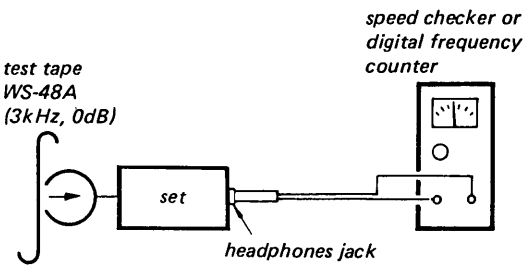
Mode	Torque meter	Meter reading
FWD	CQ-403A	more than 40 g•cm (more than 0.54 oz•inch)
REV	CQ-403R	

2-2. ELECTRICAL ADJUSTMENTS

Tape Speed Adjustment

Procedure:

Mode: playback

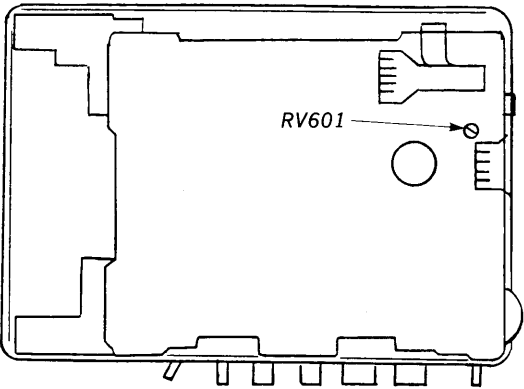


Adjustment value :

speed checker	digital frequency counter
$\pm 1.0\%$	2,970-3,030Hz

Frequency difference between the beginning and the end of the tape should be within $\pm 2.5\%$ ($\pm 75\text{Hz}$).

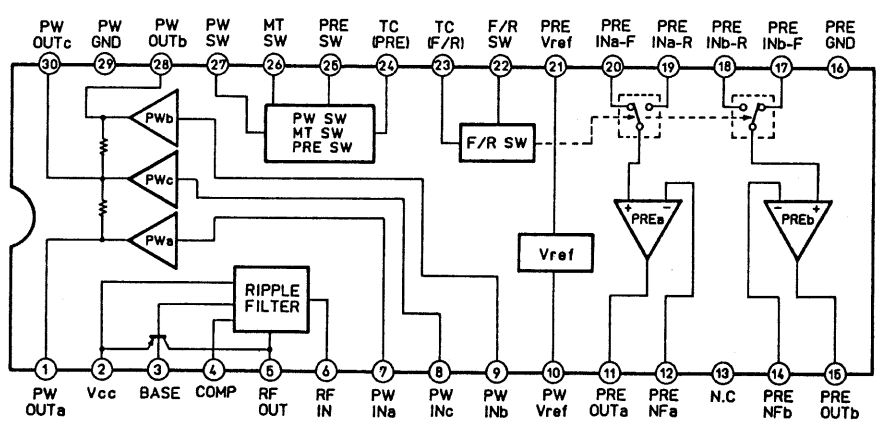
Adjustment Location:



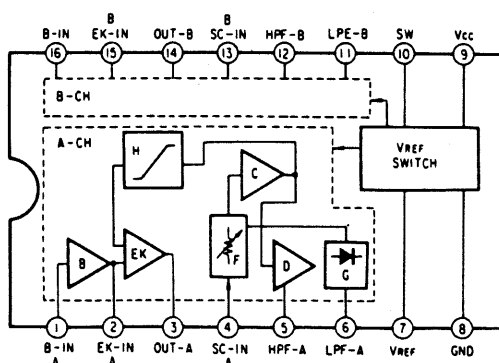
SECTION 3
DIAGRAMS

IC Block Diagrams

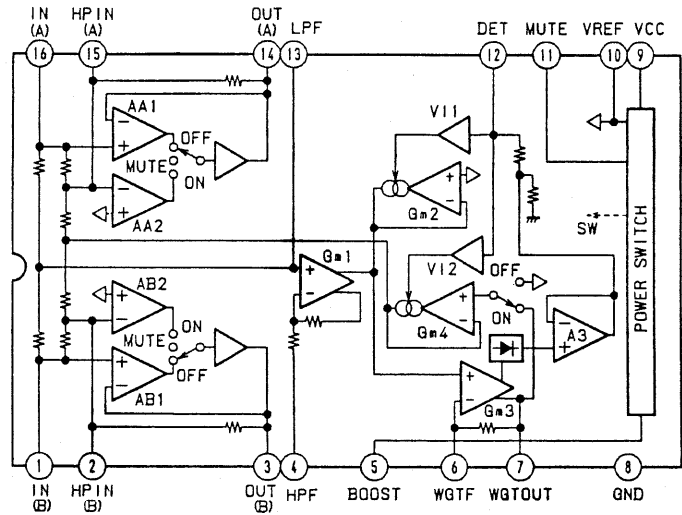
IC301 TA8159FN



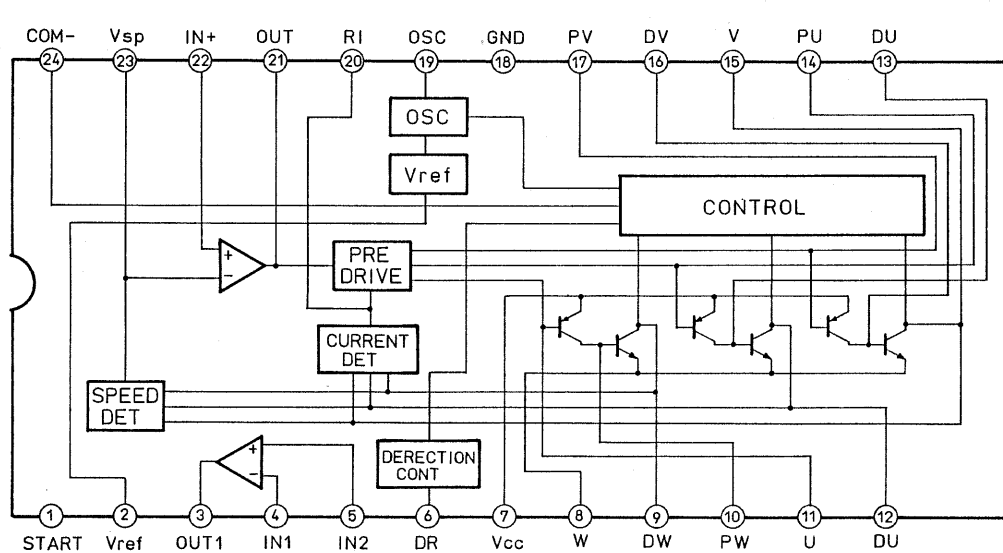
IC302 TA7793F



IC303 NJM2106M

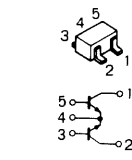


IC601 LB1672M

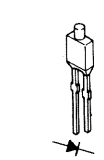


3-1. SEMICONDUCTOR LEAD LAYOUTS

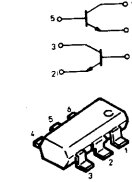
XN1216



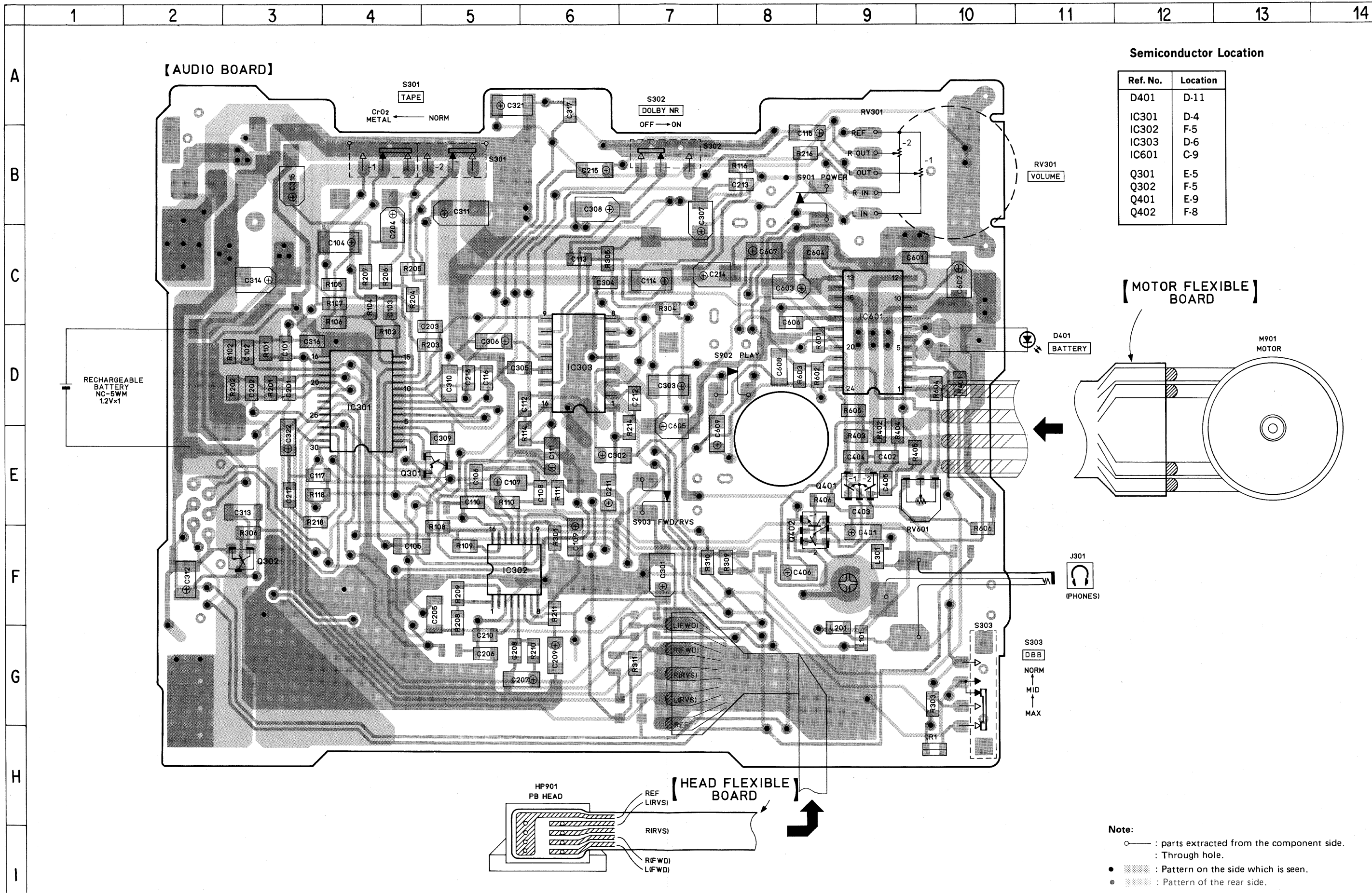
GL2PR90



XN5501



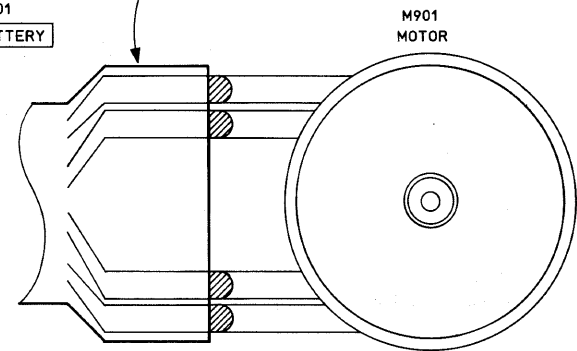
3-2. PRINTED WIRING BOARD



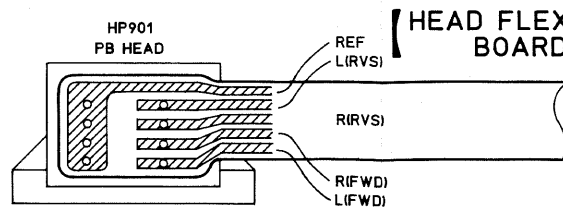
Semiconductor Location

Ref. No.	Location
D401	D-11
IC301	D-4
IC302	F-5
IC303	D-6
IC601	C-9
Q301	E-5
Q302	F-5
Q401	E-9
Q402	F-8

【MOTOR FLEXIBLE BOARD】



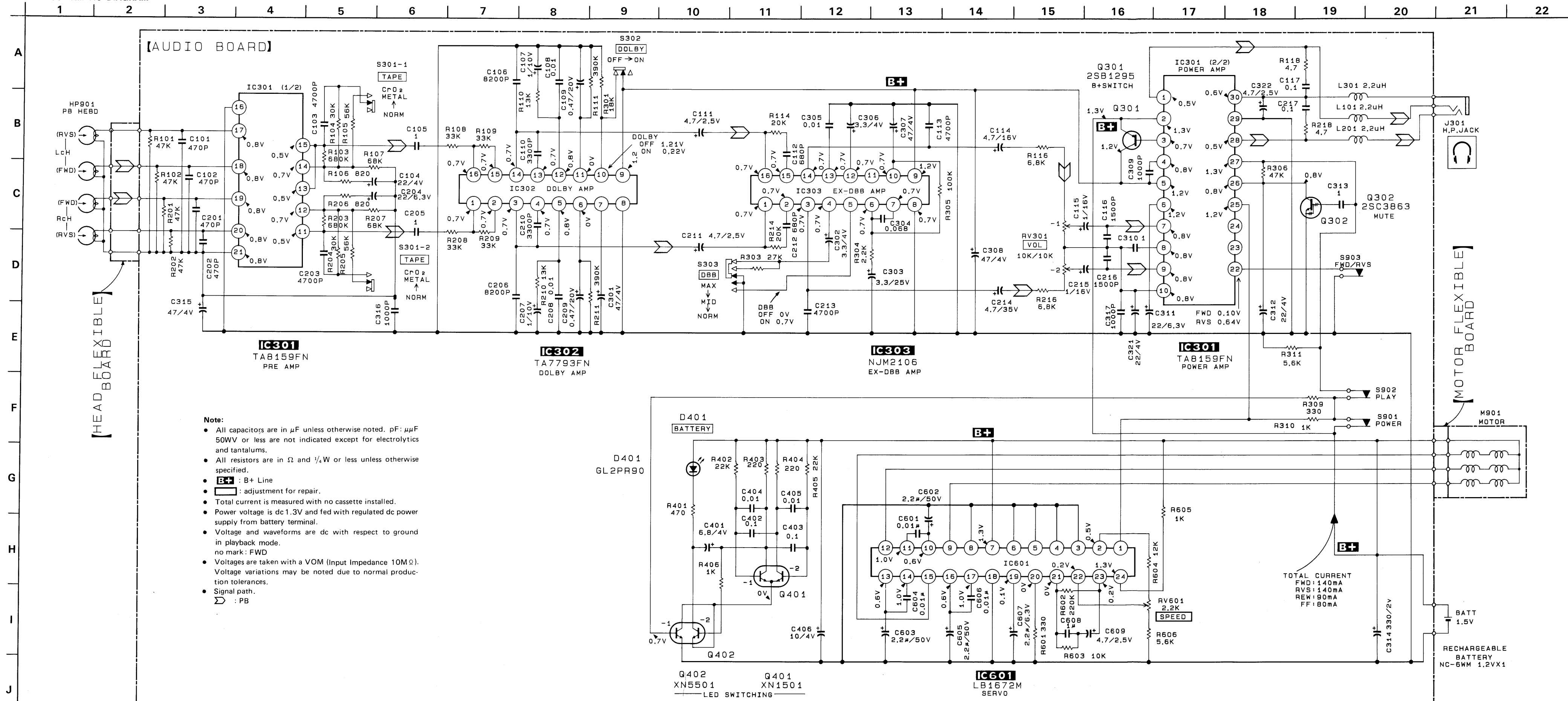
【HEAD FLEXIBLE BOARD】



Note:

- : parts extracted from the component side.
- : Through hole.
- : Pattern on the side which is seen.
- : Pattern of the rear side.

3-3. SCHEMATIC DIAGRAM



SECTION 4 EXPLODED VIEWS

NOTE:

The mechanical parts with no reference number in the exploded views are not supplied.

The construction parts of an assembled part are indicated with a collation number in the remark column.

- Items marked "★" are not stocked since they are seldom required for routine service. Some delay should be anticipated when ordering these items.

Due to standardization, parts with part number suffix -XX and -X may be different from the parts specified in the components used on the set.

- Color Indication of Appearance Parts
Example:

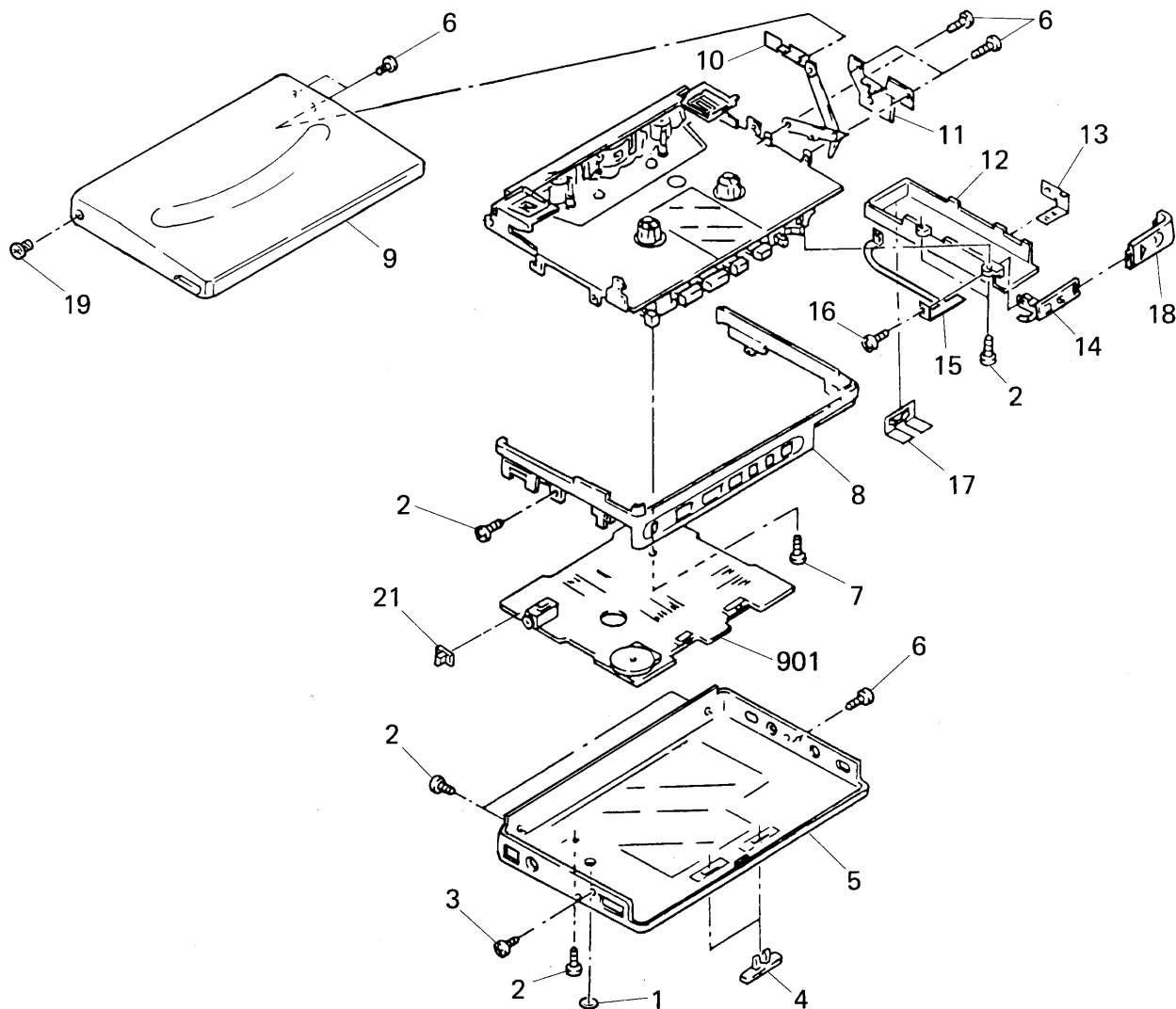
(RED) ... KNOB, BALANCE (WHITE)

↑ ↑

Cabinet's Color

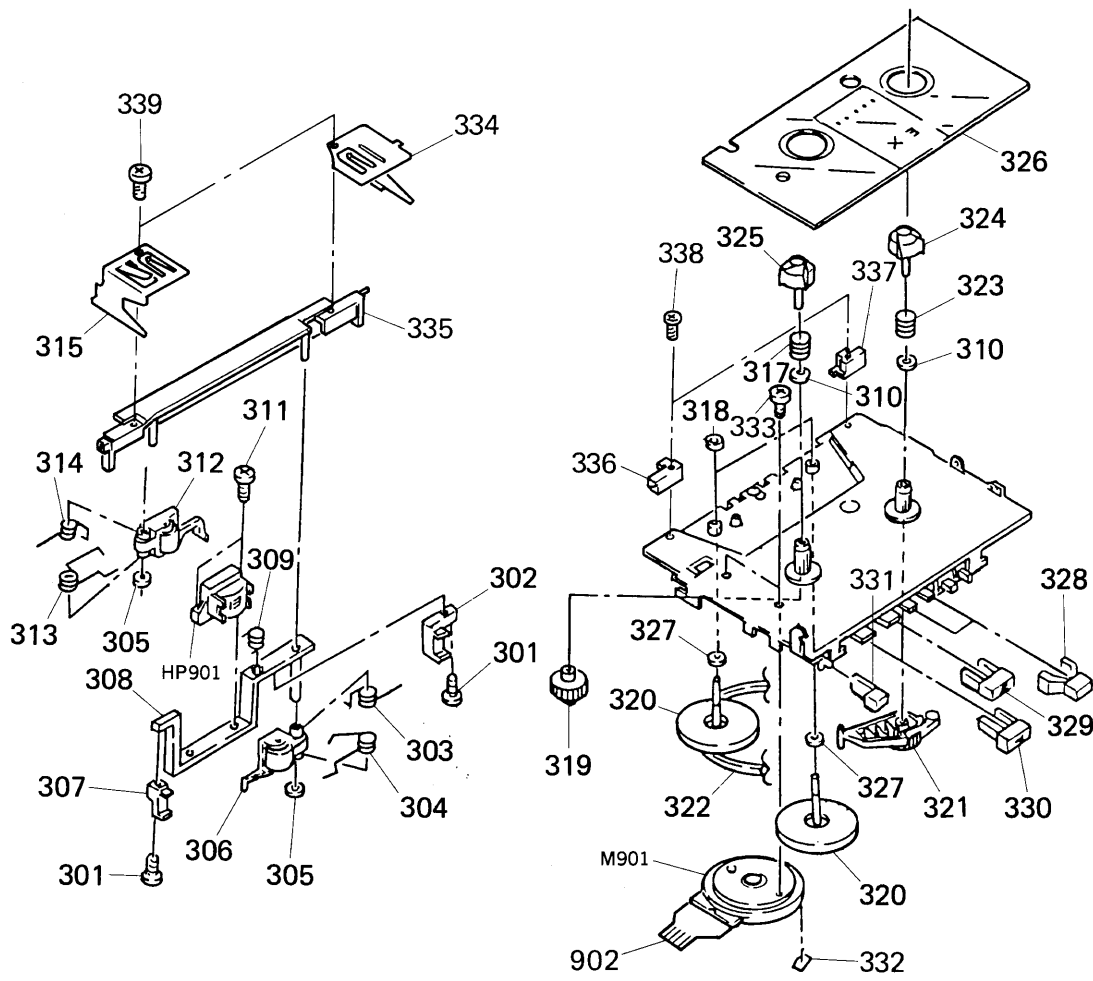
Parts' Color

4-1. CABINET SECTION



<u>Ref.No</u>	<u>Part No.</u>	<u>Description</u>	<u>Remarks</u>	<u>Ref.No</u>	<u>Part No.</u>	<u>Description</u>	<u>Remarks</u>
1	3-342-380-01	SHEET, SPEED HOLE		12	3-358-705-01	HOLDER, BATTERY	
2	3-704-197-31	SCREW (M1.4X3.0), LOCKING		13	3-347-293-01	CONTACT (MINUS)	
3	3-704-197-61	SCREW (M1.4X4.0), LOCKING		14	X-3348-113-1	BOARD ASSY, TERMINAL, BATTERY	
4	3-348-187-01	KNOB (TAPE)		15	3-358-702-01	CONTACT (PLUS)	
5	X-3348-176-1	PANEL ASSY (B), CONTROL		16	3-335-797-01	SCREW (M1.4X2), TOOTHED LOCK	
6	3-704-197-01	SCREW (M1.4X1.6), LOCKING		17	3-353-188-01	TERMINAL BOARD (MINUS)	
7	3-704-197-11	SCREW (M1.4X2.0), LOCKING		18	3-353-599-01	LID, BATTERY CASE	
8	3-358-706-11	ORNAMENT, REEL		19	3-331-665-01	SCREW (M1.4), STEP	
9	X-3348-181-1	LID ASSY (A), CASSETTE		21	3-348-186-01	KNOB (DBB)	
10	X-3348-174-	ARM ASSY, CLICK		901	A-3070-304-A	MOUNTED PCB, AUDIO	
11	3-358-701-01	REINFORCEMENT					

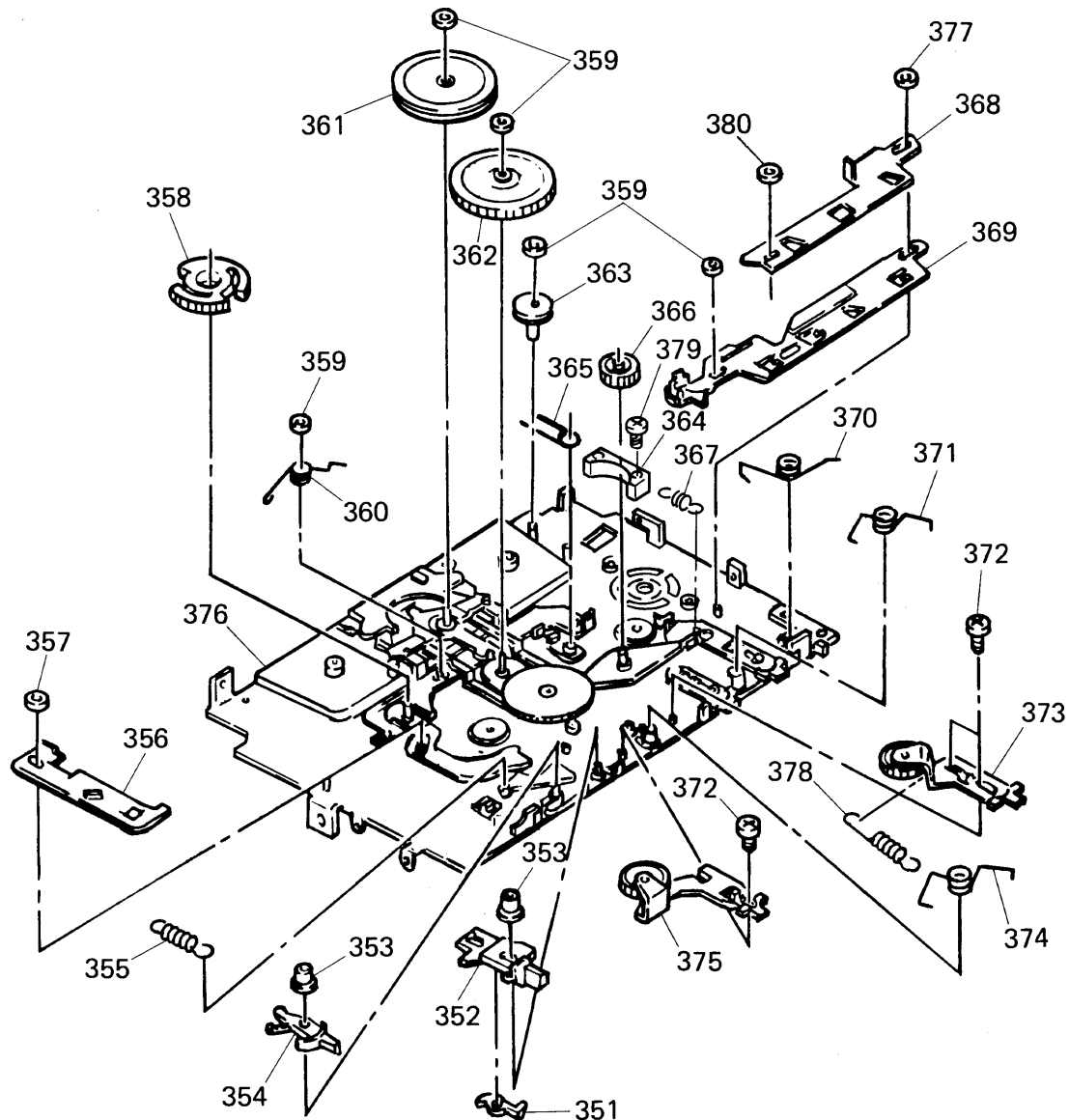
4-2. MECHANISM SECTION 1
(MT-WM-190-45)



Ref.No	Part No.	Description	Remarks
301	3-348-998-31	SCREW (M1.4X2.5), TAPPING, PAN	
302	*3-344-693-01	GUIDE (LEFT)	
303	3-341-468-01	SPRING (R)	
304	3-354-420-01	SPRING (PINCH RK), TORSION	
305	3-341-473-01	WASHER (MP)	
306	X-3331-035-1	PINCH LEVER (R) ASSY	
307	*3-344-694-01	GUIDE (RIGHT)	
308	*3-345-725-01	LEVER (AZ), HEAD	
309	3-347-205-01	SPRING (HD LEVER), TORSION	
310	3-348-990-11	WASHER (THRUST)	
311	3-348-998-71	SCREW (M1.4X4.5), TAPPING, PAN	
312	X-3331-036-1	PINCH LEVER (N) ASSY	
313	3-354-421-01	SPRING (PINCH NK), TORSION	
314	3-341-469-01	SPRING (N)	
315	3-342-360-01	HOLDER (RIGHT), CASSETTE	
317	3-348-989-01	SPRING, COMPRESSION	
318	3-352-098-01	WASHER, STOPPER	
319	3-348-151-01	GEAR (TAKE-UP REEL)	
320	X-3352-007-1	WHEEL (X) ASSY, CAPSTAN	
321	X-3348-110-1	LEVER ASSY, PICK UP	
322	3-349-814-01	BELT	

Ref.No	Part No.	Description	Remarks
323	3-354-494-01	SPRING (S REEL), COMPRESSION	
324	3-348-149-01	REEL, SUPPLY	
325	3-348-150-01	REEL, TAKE-UP	
326	3-353-147-01	COVER (X.A), MD	
327	3-354-407-01	WASHER	
328	3-348-138-01	BUTTON (FR)	
329	3-348-136-01	BUTTON (STOP)	
330	3-348-134-01	BUTTON (PLAY)	
331	3-348-129-01	BUTTON (OPEN)	
332	3-703-929-01	SPACER (P)	
333	3-354-448-01	SCREW (TOOTH)	
334	3-342-361-01	HOLDER (LEFT), CASSETTE	
335	X-3352-042-1	HOLDER (SZ) ASSY	
336	3-342-369-01	GUIDE (RIGHT), HOLDER	
337	3-342-368-02	GUIDE (LEFT), HOLDER	
338	3-704-244-63	SCREW (P1.7X4.0)	
339	3-704-381-51	SCREW (M1.4X3.5), TAPPING, PAN	
902	1-629-873-11	PC BOARD, MOTOR FLEXIBLE	
M901	1-541-660-11	MOTOR	
HP901	1-543-650-11	HEAD, MAGNETIC (PLAYBACK)	

4.3. MECHANISM SECTION 2 (MT-WM-190-45)



Ref.No	Part No.	Description	Remarks	Ref.No	Part No.	Description	Remarks
351	3-348-101-01	RATCHET		366	3-352-021-01	GEAR (N.X)	
352	3-348-156-01	LEVER, DIR		367	3-348-104-01	SPRING, TENSION	
353	3-348-102-01	BUSHING		368	*3-352-028-01	LEVER (X), SW	
354	3-348-105-01	LEVER, MODE SELECTION		369	X-3348-102-1	LEVER ASSY, LOCK	
355	3-348-163-01	SPRING, TENSION		370	3-348-162-01	SPRING (LOCK), TORSION	
356	*3-352-002-02	LEVER (X), TRIGGER		371	3-348-103-01	SPRING (PLAY), TORSION	
357	3-348-953-11	WASHER		372	3-348-160-01	SCREW (M1.4X1.3),PRECISION PAN	
359	3-348-996-01	WASHER		373	X-3352-004-1	LEVER (X) ASSY, FF	
358	3-352-032-01	GEAR (X), CAM		374	3-348-168-01	SPRING (FR), TORSION	
360	3-348-172-03	SPRING (S.OFF), TORSION		375	X-3352-005-1	LEVER (X) ASSY, REW	
361	3-352-007-01	PULLEY (MIDWAY.X)		376	X-3348-177-1	CHASSIS (X.B) COMPLETE ASSY	
362	X-335-202-73	CLUTCH (X) ASSY		377	3-352-098-01	WASHER, STOPPER	
363	3-352-008-01	PULLEY (REVERSE.X)		378	3-352-026-01	SPRING, TENSION	
364	3-357-918-01	GUIDE (BELT)		379	3-704-252-41	SCREW (M1.4X6)	
365	3-348-159-01	SPRING (NR), TORSION		380	3-357-927-01	WASHER	

SECTION 5 ELECTRICAL PARTS LIST

NOTE:

- Due to standardization, replacements in the parts list may be different from the parts specified in the diagrams or the components used on the set.
- Items marked "★" are not stocked since they are seldom required for routine service. Some delay should be anticipated when ordering these items.
- If there are two or more same circuits in a set such as a stereophonic machine, only typical circuit parts may be indicated and capacitors and resistors in other same circuits may be omitted.

CAPACITORS:MF: μ F, PF: μ F.**RESISTORS**

- All resistors are in ohms.
- F: nonflammable

COILS

- MMH: mH, UH: μ H



SEMICONDUCTORSIn each case, U: μ , for example:UA...: μ A..., UPA...: μ PA...,UPC...: μ PC, UPD...: μ PD...

Ref.No	Part No.	Description					Ref.No	Part No.	Description				
901	A-3070-304-A	MOUNTED PCB, AUDIO					C317	1-163-009-11	CERAMIC CHIP	0.001MF	10%	50V	
902	1-629-873-11	PC BOARD, MOTOR FLEXIBLE					C321	1-128-015-11	ELECT CHIP	22MF	0	4V	
CAPACITOR													
C101	1-163-005-11	CERAMIC CHIP	470PF	10%	50V		C322	1-135-218-11	TANTAL. CHIP	4.7MF	20%	2.5V	
C102	1-163-005-11	CERAMIC CHIP	470PF	10%	50V		C401	1-135-170-21	TANTAL. CHIP	6.8MF	20%	4V	
C103	1-163-017-00	CERAMIC CHIP	0.0047MF	5%	50V		C402	1-163-038-00	CERAMIC CHIP	0.1MF		25V	
C104	1-128-015-11	ELECT CHIP	22MF	0	4V		C403	1-163-038-00	CERAMIC CHIP	0.1MF		25V	
C105	1-162-638-11	CERAMIC CHIP	1MF		16V		C404	1-164-232-11	CERAMIC CHIP	0.01MF	10%	50V	
C106	1-163-020-00	CERAMIC CHIP	0.0082MF	5%	50V		C405	1-164-232-11	CERAMIC CHIP	0.01MF	10%	50V	
C107	1-135-208-11	TANTAL. CHIP	1MF	10%	10V		C406	1-135-201-11	TANTAL. CHIP	10MF	20%	4V	
C108	1-164-232-11	CERAMIC CHIP	0.01MF	5%	50V		C601	1-164-232-11	CERAMIC CHIP	0.01MF	10%	50V	
C109	1-135-192-21	TANTAL. CHIP	0.47MF	10%	20V		C602	1-126-601-11	ELECT	2.2MF	20%	50V	
C110	1-164-182-11	CERAMIC CHIP	0.0033MF	5%	50V		C603	1-126-601-11	ELECT	2.2MF	20%	50V	
C111	1-135-218-11	TANTAL. CHIP	4.7MF	20%	2.5V		C604	1-164-232-11	CERAMIC CHIP	0.01MF	10%	50V	
C112	1-163-007-11	CERAMIC CHIP	680PF	10%	50V		C605	1-126-601-11	ELECT	2.2MF	20%	50V	
C113	1-163-017-00	CERAMIC CHIP	0.0047MF	5%	50V		C606	1-164-232-11	CERAMIC CHIP	0.01MF	10%	50V	
C114	1-128-029-11	ELECT CHIP	4.7MF	0	16V		C607	1-135-149-21	TANTAL. CHIP	2.2MF	20%	6.3V	
C115	1-135-091-00	TANTAL. CHIP	1MF	20%	16V		C608	1-162-638-11	CERAMIC CHIP	1MF		16V	
C116	1-163-011-11	CERAMIC CHIP	0.0015MF	10%	50V		C609	1-135-218-11	TANTAL. CHIP	4.7MF	20%	2.5V	
C117	1-163-038-00	CERAMIC CHIP	0.1MF		25V		D401	8-719-976-16	DIODE GL2PR90				
C201	1-163-005-11	CERAMIC CHIP	470PF	10%	50V		HP901	1-543-650-11	HEAD, MAGNETIC (PLAYBACK)				
C202	1-163-005-11	CERAMIC CHIP	470PF	10%	50V		IC301	8-759-231-86	IC TA8159FN				
C203	1-163-017-00	CERAMIC CHIP	0.0047MF	5%	50V		IC302	8-759-230-88	IC TA7793FN				
C204	1-126-605-11	ELECT	22MF	20%	6.3V		IC303	8-759-711-24	IC NJM2106M				
C205	1-162-638-11	CERAMIC CHIP	1MF		16V		IC601	8-759-821-20	IC LB1672M				
C206	1-163-020-00	CERAMIC CHIP	0.0082MF	5%	50V		J301	1-569-361-11	JACK 1P				
C207	1-135-208-11	TANTAL. CHIP	1MF	10%	10V		JR1	1-216-295-00	METAL GLAZE	0	5%	1/10W	
C208	1-164-232-11	CERAMIC CHIP	0.01MF	5%	50V		L101	1-410-997-31	INDUCTOR CHIP	2.2UH			
C209	1-135-192-21	TANTAL. CHIP	0.47MF	10%	20V		L201	1-410-997-31	INDUCTOR CHIP	2.2UH			
C210	1-164-182-11	CERAMIC CHIP	0.0033MF	5%	50V		L301	1-410-997-31	INDUCTOR CHIP	2.2UH			
C211	1-135-218-11	TANTAL. CHIP	4.7MF	20%	2.5V		M901	1-541-660-11	MOTOR				
C212	1-163-007-11	CERAMIC CHIP	680PF	10%	50V		Q301	8-729-807-87	TRANSISTOR 2SB1295-UL6				
C213	1-163-017-00	CERAMIC CHIP	0.0047MF	5%	50V		Q302	8-729-805-38	TRANSISTOR 2SC3863				
C214	1-126-603-11	ELECT	4.7MF	20%	35V		Q401	8-729-421-23	TRANSISTOR XN1216				
C215	1-135-091-00	TANTAL. CHIP	1MF	20%	16V		Q402	8-729-402-75	TRANSISTOR XN5501				
C216	1-163-011-11	CERAMIC CHIP	0.0015MF	10%	50V		RESISTOR						
C217	1-163-038-00	CERAMIC CHIP	0.1MF		25V		R101	1-216-089-00	METAL GLAZE	47K	5%	1/10W	
C301	1-126-607-11	ELECT	47MF	20%	4V		R102	1-216-089-00	METAL GLAZE	47K	5%	1/10W	
C302	1-135-180-21	TANTAL. CHIP	3.3MF	20%	4V		R103	1-216-117-00	METAL GLAZE	680K	5%	1/10W	
C303	1-128-034-11	ELECT CHIP	3.3MF	0	25V		R104	1-216-084-00	METAL GLAZE	30K	5%	1/10W	
C304	1-163-833-00	CERAMIC CHIP	0.068MF	10%	25V		R105	1-216-091-00	METAL GLAZE	56K	5%	1/10W	
C305	1-164-232-11	CERAMIC CHIP	0.01MF	5%	50V		R106	1-216-047-00	METAL GLAZE	820	5%	1/10W	
C306	1-135-180-21	TANTAL. CHIP	3.3MF	20%	4V		R107	1-216-093-00	METAL GLAZE	68K	5%	1/10W	
C307	1-126-607-11	ELECT	47MF	20%	4V		R108	1-216-085-00	METAL GLAZE	33K	5%	1/10W	
C308	1-126-607-11	ELECT	47MF	20%	4V		R109	1-216-085-00	METAL GLAZE	33K	5%	1/10W	
C309	1-163-009-11	CERAMIC CHIP	0.001MF	10%	50V		R110	1-216-076-00	METAL GLAZE	13K	5%	1/10W	
C310	1-162-638-11	CERAMIC CHIP	1MF		16V		R111	1-216-111-00	METAL GLAZE	390K	5%	1/10W	
C311	1-126-605-11	ELECT	22MF	20%	6.3V		R114	1-216-080-00	METAL GLAZE	20K	5%	1/10W	
C312	1-135-202-21	TANTAL. CHIP	22MF	20%	4V		R116	1-216-069-00	METAL GLAZE	6.8K	5%	1/10W	
C313	1-162-638-11	CERAMIC CHIP	1MF		16V		R118	1-216-308-00	METAL GLAZE	4.7	5%	1/10W	
C314	1-126-608-11	ELECT	330MF	20%	2V		R201	1-216-089-00	METAL GLAZE	47K	5%	1/10W	
C315	1-126-607-11	ELECT	47MF	20%	4V								
C316	1-163-009-11	CERAMIC CHIP	0.001MF	10%	50V								

Ref.No	Part No.	Description			
R202	1-216-089-00	METAL GLAZE	47K	5%	1/10W
R203	1-216-117-00	METAL GLAZE	680K	5%	1/10W
R204	1-216-084-00	METAL GLAZE	30K	5%	1/10W
R205	1-216-091-00	METAL GLAZE	56K	5%	1/10W
R206	1-216-047-00	METAL GLAZE	820	5%	1/10W
R207	1-216-093-00	METAL GLAZE	68K	5%	1/10W
R208	1-216-085-00	METAL GLAZE	33K	5%	1/10W
R209	1-216-085-00	METAL GLAZE	33K	5%	1/10W
R210	1-216-076-00	METAL GLAZE	13K	5%	1/10W
R211	1-216-111-00	METAL GLAZE	390K	5%	1/10W
R214	1-216-080-00	METAL GLAZE	20K	5%	1/10W
R216	1-216-069-00	METAL GLAZE	6.8K	5%	1/10W
R218	1-216-308-00	METAL GLAZE	4.7	5%	1/10W
R301	1-216-079-00	METAL GLAZE	18K	5%	1/10W
R303	1-216-083-00	METAL GLAZE	27K	5%	1/10W
R304	1-216-057-00	METAL GLAZE	2.2K	5%	1/10W
R305	1-216-097-00	METAL GLAZE	100K	5%	1/10W
R306	1-216-089-00	METAL GLAZE	47K	5%	1/10W
R309	1-216-037-00	METAL GLAZE	330	5%	1/10W
R310	1-216-049-00	METAL GLAZE	1K	5%	1/10W
R311	1-216-067-00	METAL GLAZE	5.6K	5%	1/10W
R401	1-216-041-00	METAL GLAZE	470	5%	1/10W
R402	1-216-081-00	METAL GLAZE	22K	5%	1/10W
R403	1-216-033-00	METAL GLAZE	220	5%	1/10W
R404	1-216-033-00	METAL GLAZE	220	5%	1/10W
R405	1-216-081-00	METAL GLAZE	22K	5%	1/10W
R406	1-216-049-00	METAL GLAZE	1K	5%	1/10W
R601	1-216-037-00	METAL GLAZE	330	5%	1/10W
R602	1-216-105-00	METAL GLAZE	220K	5%	1/10W
R603	1-216-073-00	METAL GLAZE	10K	5%	1/10W
R604	1-216-075-00	METAL GLAZE	12K	5%	1/10W
R605	1-216-049-00	METAL GLAZE	1K	5%	1/10W
R606	1-216-067-00	METAL GLAZE	5.6K	5%	1/10W
RV301	1-238-488-11	RES, VAR, CARBON 10K/10K (VOL)			
RV601	1-238-202-11	RES, ADJ, METAL GLAZE 2.2K (SPEED)			
S301	1-571-277-11	SWITCH, SLIDE (TAPE)			
S302	1-571-275-11	SWITCH, SLIDE (DOLBY NR)			
S303	1-571-506-41	SWITCH, SLIDE (DBB)			
S901	1-571-585-11	SWITCH, PUSH (1 KEY) (POWER)			
S902	1-571-585-11	SWITCH, PUSH (1 KEY) (PLAY)			
S903	1-571-585-11	SWITCH, PUSH (1 KEY) (FWD/RVS)			

Ref.No	Part No.	Description
		ACCESSORIES & PACKING MATERIALS

	1-526-565-00	AC PLUG ADAPTOR
	1-528-231-11	BATTERY, NICKEL CADMIUM (NC-6WM)
	1-528-231-11	BATTERY, NI-CD (NC-6WM)
	△1-528-234-11	BATTERY CHARGER (BC-7L)
	1-550-492-11	CASE, BATTERY
	*3-352-084-01	HOLDER
	*3-358-716-01	CUSHION (UPPER)
	*3-358-719-01	INDIVIDUAL CARTON
	3-358-724-01	CASE, CARRYING
	3-751-530-11	MANUAL, INSTRUCTION
	8-953-333-90	HEADPHONE MDR-E545 SET

Note: The components identified by mark  or dotted line with mark  are critical for safety. Replace only with part number specified.